

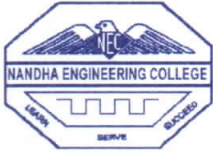


Academic Year

2020-21



Feedback Analysis and Action taken Report for Students



NANDHA ENGINEERING COLLEGE

(Autonomous)

Affiliated to Anna University Chennai * Approved by AICTE * Accredited by NBA-NewDelhi

Pitchandampalayam, (P.O), Vaikkalmedu, Erode - Perundurai Road, Erode - 638 052

Phone : 04294-225585, 223711, 223722, 226393 Mobile : 73737 23722 Fax : 04294 - 224787

Website : www.nandhaengg.org

E.mail : info@nandhaengg.org

STUDENTS FEEDBACK ON CURRICULAM AND SYLLABUS

STUDENT FEEDBACK 20-21

SURVEY COUNT: 1232

S.No	Feedback Question's	Excellent	Good	Fair	Poor	Total Weightage	Percentage	3-Scale Weightage
1	The curriculum and syllabus are well organized and easy to follow	363	716	119	34	3872	78.57%	2.357
2	Is the entire syllabus covered by the faculty?	367	678	144	43	3833	77.78%	2.333
3	Laboratory exercise improve my ability to understand concepts and	383	627	175	47	3810	77.31%	2.319
4	The depth of the syllabus is proportional to course outcomes	345	693	157	37	3810	77.31%	2.319
5	The correct credit were allocated to the course depending on the	390	697	114	31	3910	79.34%	2.380
6	The Syllabus provide the necessary skill set required by the industry	357	680	153	42	3816	77.44%	2.323
7	The books prescribed as reference material are relevant, updated and	358	659	161	54	3785	76.81%	2.304
8	The elective offered are pertinent to the specification streams and to	351	683	153	45	3804	77.19%	2.316
9	Is the Syllabus career oriented?	383	674	136	39	3865	78.43%	2.353
10	Is the Pre-requisite course appropriate?	342	700	152	38	3810	77.31%	2.319
11	Does the teacher provide examples of concepts/principles, description	447	624	109	52	3930	79.75%	2.392
OVER ALL PERCENTAGE						42245	77.93%	2.34




Dr.N.Rengarajan, B.Sc., B.Tech., M.E., Ph.D.,
PRINCIPAL
NANDHA ENGINEERING COLLEGE
(Autonomous)
ERODE - 638 052.



NANDHA ENGINEERING COLLEGE (Autonomous)

Affiliated to Anna University Chennai ✦ Approved by AICTE ✦ Accredited by NBA-NewDelhi

Pitchandampalayam, (P.O), Vaikkalmedu, Erode - Perundurai Road, Erode - 638 052

Phone : 04294-225585, 223711, 223722, 226393 Mobile : 73737 23722 Fax : 04294 - 224787

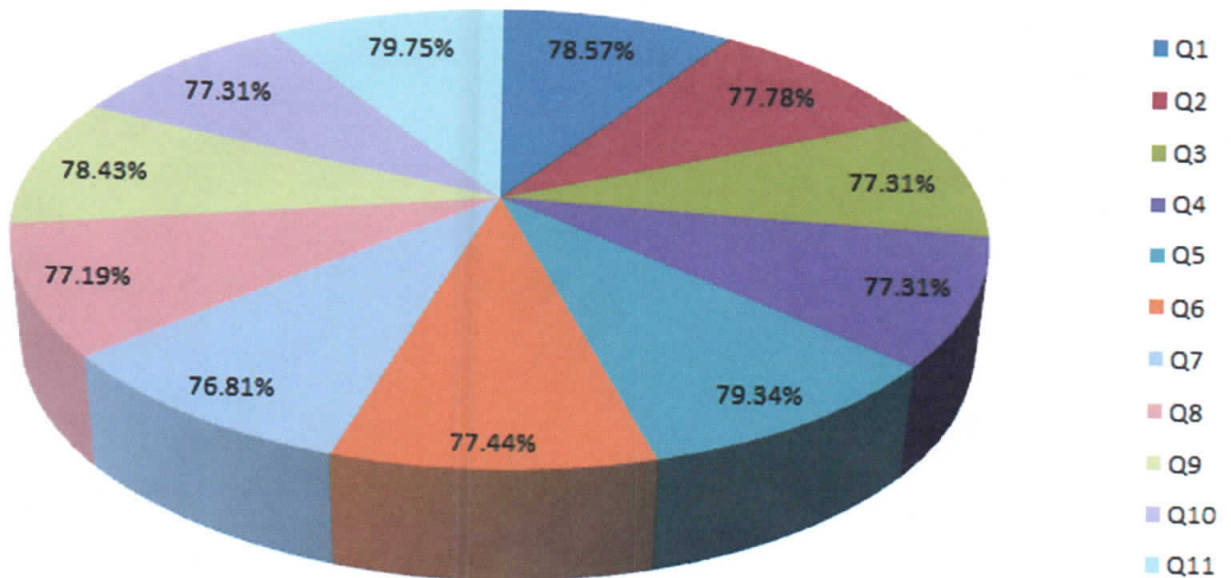
Website : www.nandhaengg.org

E.mail : info@nandhaengg.org

STUDENT FEEDBACK REPORT ON CURRICULUM AND SYLLABUS –

(2020 – 2021)

STUDENT FEEDBACK



Dr. N. Rengarajan
Dr. N. Rengarajan, B.Sc., B.Tech., M.E., Ph.D.,
PRINCIPAL
NANDHA ENGINEERING COLLEGE
(Autonomous)
ERODE - 638 052.



NANDHA ENGINEERING COLLEGE

(Autonomous)

Affiliated to Anna University Chennai ✦ Approved by AICTE ✦ Accredited by NBA-NewDelhi

Pitchandampalayam, (P.O), Vaikkalmedu, Erode - Perundurai Road, Erode - 638 052

Phone : 04294-225585, 223711, 223722, 226393 Mobile : 73737 23722 Fax : 04294 - 224787

Website : www.nandhaengg.org

E.mail : info@nandhaengg.org

STUDENT FEEDBACK REPORT ON CURRICULUM AND SYLLABUS –

(2020 – 2021) - QUESTIONS

- 1.The curriculum and syllabus are well organized and easy to follow
- 2.Is the entire syllabus covered by the faculty?
- 3.Laboratory exercise improve my ability to understand concepts and helps to relate and apply theory to practice
- 4.The depth of the syllabus is proportional to course outcomes
- 5.The correct credit were allocated to the course depending on the difficulty of the course
- 6.The Syllabus provide the necessary skill set required by the industry
- 7.The books prescribed as reference material are relevant, updated and appropriate
- 8.The elective offered are pertinent to the specification streams and to technology advancements
- 9.Is the Syllabus career oriented?
- 10.Is the Pre-requisite course appropriate?
- 11.Does the teacher provide examples of concepts/principles, description effectively?




Dr.N.Rengarajan, B.Sc., B.Tech., M.E., Ph.D.,
PRINCIPAL
NANDHA ENGINEERING COLLEGE
(Autonomous)
ERODE - 638 052.



NANDHA ENGINEERING COLLEGE

(Autonomous)

Affiliated to Anna University Chennai + Approved by AICTE + Accredited by NBA-NewDelhi

Pitchandampalayam, (P.O), Vaikkalmedu, Erode - Perundurai Road, Erode - 638 052

Phone : 04294-225585, 223711, 223722, 226393 Mobile : 73737 23722 Fax : 04294 - 224787

Website : www.nandhaengg.org

E.mail : info@nandhaengg.org

Students Feedback Report on Curriculum and Syllabus

Analysis And Action Taken Report

Feedback from the students is collected to strengthen the quality of teaching-learning environment and improve the performance of the students.

Points on analysis

- Most of the students satisfied with the laboratory exercises which improve the practical knowledge.
- Students agreed that the design of the course and the depth of the syllabus are proportional to course outcomes.
- 79.34% of students accepted that the accurate credit is allocated to the course by considering the complexity of the course.
- Most of the students suggested that the text books and reference books are adequate and map on to the syllabus.
- 77.19% of the students accepted that the elective courses are appropriate to the specification streams and technology advancements.
- Students are satisfied with the examples of concepts / principles and description provided by the teachers.
- Majority of the students reported that the placement activity of the college is excellent.

Suggestions

- i. To include adequate industry oriented courses to fulfill the industry needs
- ii. To modify the teaching learning process in mathematical subjects
- iii. Suggested to include skill development courses in curriculum



NANDHA ENGINEERING COLLEGE

(Autonomous)

Affiliated to Anna University Chennai + Approved by AICTE + Accredited by NBA-NewDelhi

Pitchandampalayam, (P.O), Vaikkalmedu, Erode - Perundurai Road, Erode - 638 052

Phone : 04294-225585, 223711, 223722, 226393 Mobile : 73737 23722 Fax : 04294 - 224787

Website : www.nandhaengg.org

E.mail : info@nandhaengg.org

Action taken

1. Value Added Courses are offered to all programme to meet out the industrial needs and expectations.
2. The faculty members are instructed to use advanced ICT tools like Google classroom, Examly to strengthen the teaching learning process.
3. More Workshops, Case studies, Quiz and Seminars are organized to improve the technological skills.




PRINCIPAL
Nandha Engineering College
(Autonomous)
Erode - 638 052.

Feedback Analysis and Action taken Report for Faculty



NANDHA ENGINEERING COLLEGE

(Autonomous)

Affiliated to Anna University Chennai * Approved by AICTE * Accredited by NBA-NewDelhi

Pitchchandampalayam, (P.O), Vaikkalmedu, Erode - Perundurai Road, Erode - 638 052

Phone : 04294-225585, 223711, 223722, 226393 Mobile : 73737 23722 Fax : 04294 - 224787

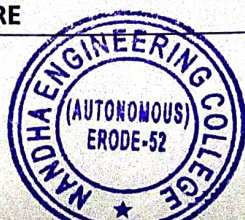
Website : www.nandhaengg.org


E.mail : info@nandhaengg.org

TEACHERS' FEEDBACK ON CURRICULAM AND SYLLABUS

ACADEMIC YEAR 2020-2021

S.No	Question's	Excellent	Good	Fair	Poor	Total Weightage	Percentage	3-Scale Weightage
1	Curriculum and Syllabus on par with recent trends	71	68	2	0	492	87.23%	2.62
2	Elucidation of Course Outcomes	57	76	6	0	468	82.98%	2.49
3	Adequacy of Academic tasks in the course plan	64	75	1	0	483	85.64%	2.57
4	Syllabus in accordance with Competitive Examinations	44	82	12	0	446	79.08%	2.37
5	Importance and Relevance of the course to Industry and Societal needs	58	73	8	0	467	82.80%	2.48
6	Accessibility of Relevant Reading Materials and E-sources in the library	61	74	4	1	475	84.22%	2.53
7	Course equilibrium between theory and application	48	80	9	1	451	79.96%	2.40
8	Privilege to propose, modify, suggest and incorporate new topics in the syllabus through proper forum	57	80	3	1	475	84.22%	2.53
9	Flexibility in adopting new techniques / tools/ strategies in teaching	61	79	5	0	491	87.06%	2.61
10	Scope provided for Research activities.	39	84	18	1	445	78.90%	2.37
AVERAGE SCORE						469.3	83.21%	2.5




PRINCIPAL
Nandha Engineering College
(Autonomous)
Erode - 638 052.



NANDHA ENGINEERING COLLEGE (Autonomous)

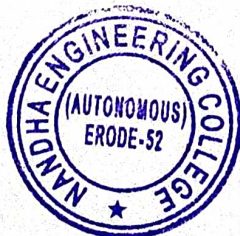
Affiliated to Anna University Chennai ✦ Approved by AICTE ✦ Accredited by NBA-NewDelhi

Pitchchandampalayam, (P.O), Vaikkalmedu, Erode - Perundurai Road, Erode - 638 052
Phone : 04294-225585, 223711, 223722, 226393 Mobile : 73737 23722 Fax : 04294 - 224787
E.mail : info@nandhaengg.org

Website : www.nandhaengg.org

TEACHERS' FEEDBACK REPORT ON CURRICULUM AND SYLLABUS – (2020 – 2021) – QUESTIONS

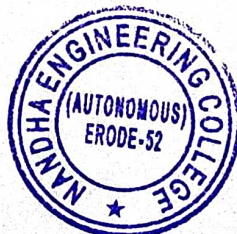
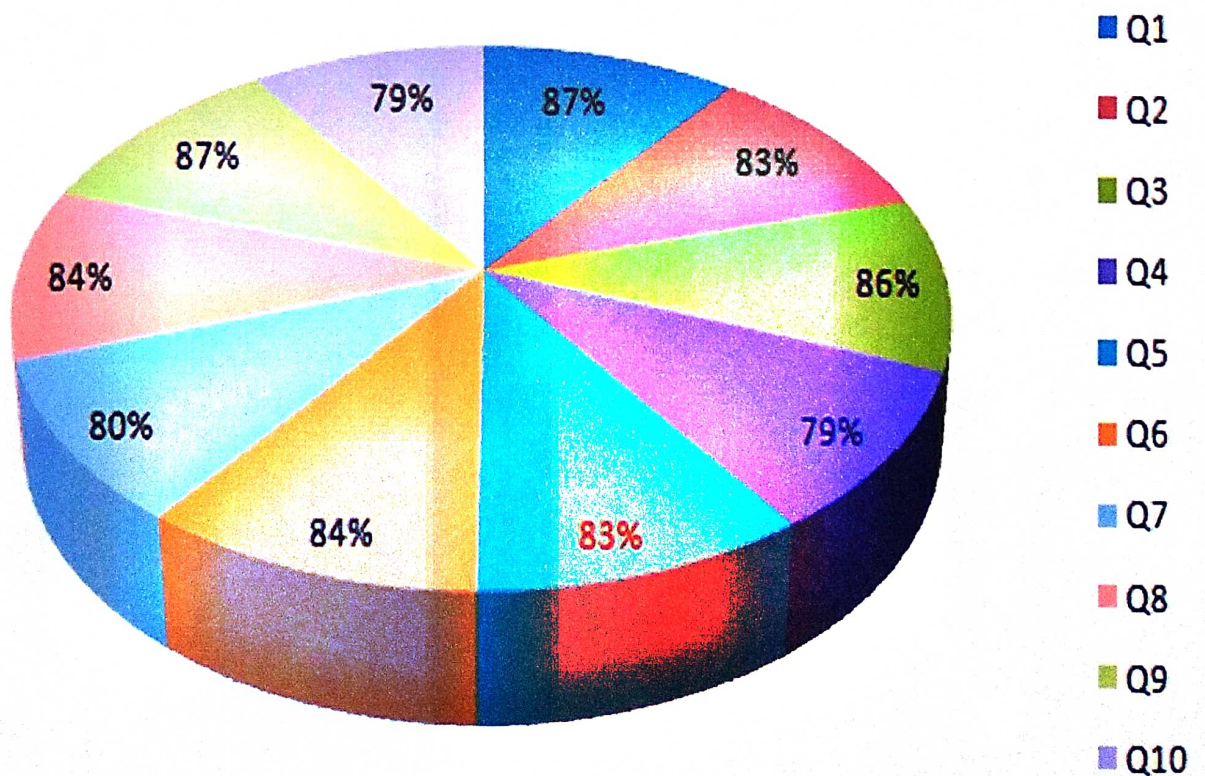
1. Curriculum and Syllabus on par with recent trends
2. Elucidation of Course Outcomes
3. Adequacy of Academic tasks in the course plan
4. Syllabus in accordance with Competitive Examinations
5. Importance and Relevance of the course to Industry and Societal needs
6. Accessibility of Relevant Reading Materials and E -sources in the library
7. Course equilibrium between theory and application
8. Privilege to propose, modify, suggest and incorporate new topics in the syllabus through proper forum
9. Flexibility in adopting new techniques / tools/ strategies in teaching
10. Scope provided for Research activities.




PRINCIPAL
Nandha Engineering College
(Autonomous)
Erode - 638 052.

TEACHERS' FEEDBACK REPORT ON CURRICULUM AND SYLLABUS – (2020 – 2021)

FACULTY FEEDBACK



[Signature]
PRINCIPAL
Nandha Engineering College
(Autonomous)
Erode - 638 052.



NANDHA ENGINEERING COLLEGE (Autonomous)

Affiliated to Anna University Chennai + Approved by AICTE + Accredited by NBA-NewDelhi

Pitchandampalayam, (P.O), Vaikkalmedu, Erode - Perundurai Road, Erode - 638 052

Phone : 04294-225585, 223711, 223722, 226393 Mobile : 73737 23722 Fax : 04294 - 224787

Website : www.nandhaengg.org

E.mail : info@nandhaengg.org

TEACHERS' FEEDBACK REPORT ON CURRICULUM AND SYLLABUS **ANALYSIS AND ACTION TAKEN REPORT**

Teachers' feedback is a vital factor in improving the quality of the curriculum which in turn improves the quality of the students. Teachers' feedback on curriculum is collected to evaluate every year and the necessary updation of the curriculum design and syllabus for the betterment of the student community.

For the academic year 2020-2021, feedback from the faculty members is received and analyzed. The following points are extracted from the analysis:

Analysis

- 87% of the faculty members opined that the Curriculum and Syllabus framed is on par with recent trends.
- 83% of faculty members suggested that the elucidation of Course Outcomes is well defined.
- Most of the faculty members proposed to revise the Syllabus which make the students to get through the Competitive Examinations easily.
- Majority of the faculty members stated that the accessibility of Relevant Reading Materials and E -sources in the library is good.
- Some of the faculty members recommended to maintain Course equilibrium between theory and application.
- 87.06% of the faculty members satisfied on the flexibility in adopting new techniques / tools in teaching-learning process.
- Most of the teachers suggested that, scope for research activities is to be improved.

Suggestions

1. Minimum two local visits are to be arranged to enhance the practical knowledge of the students.
2. Practical based syllabi should be framed.
3. Training hours are to be allocated to make the students industry ready.
4. Activities that connect industry and academy are to be increased.
5. Revision of syllabus is to be carried out to make the students to appear for the competitive exams.



NANDHA ENGINEERING COLLEGE

(Autonomous)

Affiliated to Anna University Chennai + Approved by AICTE + Accredited by NBA-NewDelhi

Pitchandampalayam, (P.O), Vaikkalmedu, Erode - Perundurai Road, Erode - 638 052

Phone : 04294-225585, 223711, 223722, 226393 Mobile : 73737 23722 Fax : 04294 - 224787

Website : www.nandhaengg.org

E.mail : info@nandhaengg.org

Action Taken

1. Due to the outburst of COVID 19 pandemic, local visits weren't permitted. The process will resume in the forthcoming academic year.
2. PBL is already in practice for second and third year students. In order to improve the practical knowledge of the students two more subjects will be allocated as PBL with the consent of BoS.
3. In the departments like CSE, ECE, EEE, IT and BME, a subject in the third year is exclusively handled by the Industrial experts.
4. In order to strengthen the connection between the Industry and Academy, ideas of industrial experts are obtained for framing curriculum and syllabi. Moreover, Value Added Courses are conducted. In response to the suggestion, Number of value added courses will be added in the forthcoming years.
5. Updation of syllabus will be carried out in the forthcoming regulations.




PRINCIPAL
Nandha Engineering College
(Autonomous)
Erode - 638 052.

Feedback Analysis and Action taken Report for Employer



NANDHA ENGINEERING COLLEGE (Autonomous)

Affiliated to Anna University Chennai * Approved by AICTE * Accredited by NBA-NewDelhi

Pitchchandampalayam, (P.O), Vaikkalmedu, Erode - Perundurai Road, Erode - 638 052

Phone : 04294-225585, 223711, 223722, 226393 Mobile : 73737 23722 Fax : 04294 - 224787

Website : www.nandhaengg.org

E.mail : info@nandhaengg.org

FEEDBACK ON SYLLABUS - EMPLOYER

EMPLOYER FEEDBACK 20-21								
SURVEY COUNT - 64								
S.No	Feedback Question's	Excellent	Good	Fair	Poor	Total Weightage	Percentage	3-Scale Weightage
1	Satisfaction with the caliber of these graduates	30	32	1	1	219	85.55%	2.566
2	Satisfaction that graduates are learning the right skills/courses relevant to your	28	32	3	1	215	83.98%	2.520
3	Satisfaction with the speed at which course content is being adapted to meet the	27	29	7	1	210	82.03%	2.461
4	Institutional Reputation	26	32	5	1	211	82.42%	2.473
5	Relevant subject or Discipline Knowledge	31	27	6	0	217	84.77%	2.543
6	Quality of Employability Skills and Attributes of our graduates	28	29	6	1	212	82.81%	2.484
7	The Institution produces high quality graduates	23	32	8	1	205	80.08%	2.402
8	Successful past experience of recruiting from this institution	20	35	8	1	202	78.91%	2.367
9	Organization and institution collaborate on joint research projects	21	30	11	2	198	77.34%	2.320
10	Ability to apply professional and / or technical knowledge in the workplace	31	29	2	2	217	84.77%	2.543
OVER ALL PERCENTAGE						2106	82.27%	2.468




Dr.N.Rengarajan, B.Sc., B.Tech., M.E., Ph.D.,
PRINCIPAL
NANDHA ENGINEERING COLLEGE
(Autonomous)
ERODE - 638 052.



NANDHA ENGINEERING COLLEGE

(Autonomous)

Affiliated to Anna University Chennai ✦ Approved by AICTE ✦ Accredited by NBA-NewDelhi

Pitchandampalayam, (P.O), Vaikkalmedu, Erode - Perundurai Road, Erode - 638 052

Phone : 04294-225585, 223711, 223722, 226393 Mobile : 73737 23722 Fax : 04294 - 224787

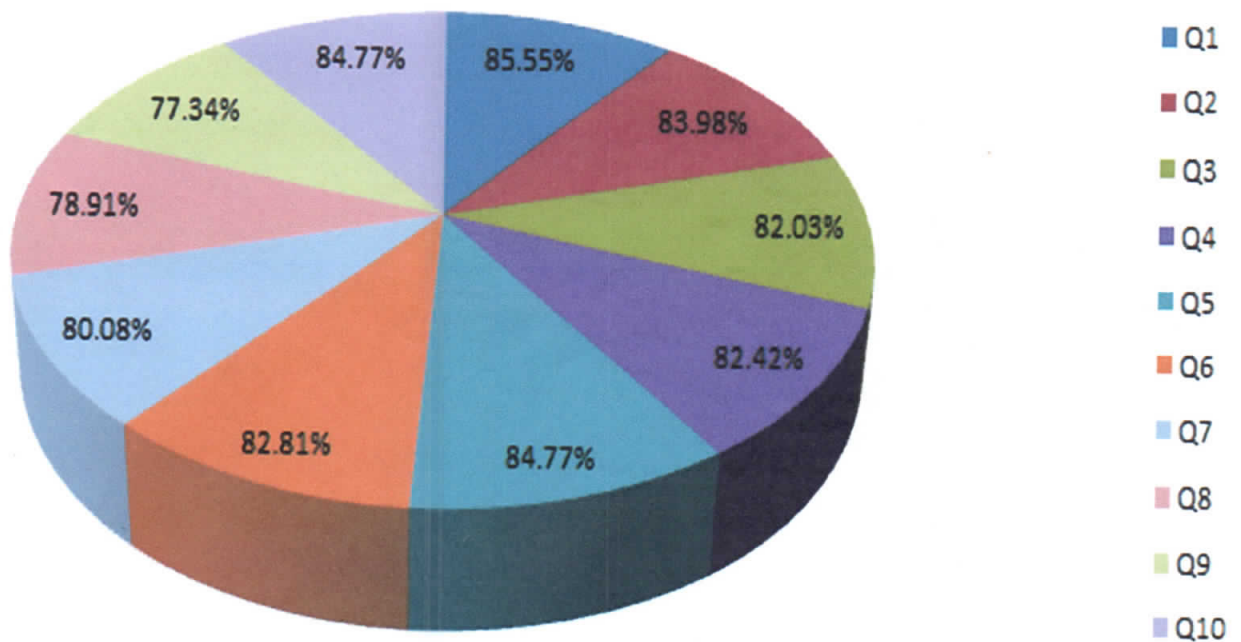
Website : www.nandhaengg.org

E.mail : info@nandhaengg.org

EMPLOYER FEEDBACK REPORT ON CURRICULUM AND SYLLABUS

– (2020 – 2021)

EMPLOYER FEEDBACK




Dr.N.Rengarajan, B.Sc., B.Tech., M.E., Ph.D.,
PRINCIPAL
NANDHA ENGINEERING COLLEGE
(Autonomous)
ERODE - 638 052.



NANDHA ENGINEERING COLLEGE

(Autonomous)

Affiliated to Anna University Chennai ✦ Approved by AICTE ✦ Accredited by NBA-NewDelhi

Pitchandampalayam, (P.O), Vaikkalmedu, Erode - Perundurai Road, Erode - 638 052

Phone : 04294-225585, 223711, 223722, 226393 Mobile : 73737 23722 Fax : 04294 - 224787

Website : www.nandhaengg.org

E.mail : info@nandhaengg.org

EMPLOYER FEEDBACK REPORT ON CURRICULUM AND SYLLABUS

(2020 – 2021) – QUESTIONS

- 1.Satisfaction with the caliber of the graduates
- 2.Satisfaction that graduates are learning the right skills/courses relevant to your organization's requirements
- 3.Satisfaction with the speed at which course content is being adapted to meet the changing industrial needs
- 4.Institutional Reputation
- 5.Relevant subject or Discipline Knowledge
- 6.Quality of Employability Skills and Attributes of our graduates
- 7.The Institution produces high quality graduates
- 8.Successful past experience of recruiting from this institution
- 9.Organization and institution collaborate on joint research projects
- 10.Ability to apply professional and / or technical knowledge in the workplace




Dr.N.Rengarajan, B.Sc., B.Tech., M.E., Ph.D.,
PRINCIPAL
NANDHA ENGINEERING COLLEGE
(Autonomous)
ERODE - 638 052.



NANDHA ENGINEERING COLLEGE

(Autonomous)

Affiliated to Anna University Chennai + Approved by AICTE + Accredited by NBA-NewDelhi

Pitchandampalayam, (P.O), Vaikkalmedu, Erode - Perundurai Road, Erode - 638 052

Phone : 04294-225585, 223711, 223722, 226393 Mobile : 73737 23722 Fax : 04294 - 224787

Website : www.nandhaengg.org

E.mail : info@nandhaengg.org

EMPLOYER FEEDBACK REPORT ON CURRICULUM AND SYLLABUS ANALYSIS AND ACTION TAKEN REPORT

Employer's feedback is obtained from various recruiting industries with the help of structured questionnaire.

Analysis

- 83.98% of employers conveyed that, the graduates have learnt the right course content relevant to the organization's requirements.
- Most of the employers accepted that, course content is adequate to meet the changing industrial needs.
- 82.42% of the employers commented that the college has good reputation.
- 84.7% of the employers conveyed that the students possess relevant subject knowledge.
- Maximum percentage of employers viewed that the quality of employability skills and attribute of the graduates are high.
- 80.08% of employers agreed that the college provides high quality graduates.
- 78.91% of employers disclose that they had successful past experience in the recruitment process.
- 84.77% of the employers conveyed that the students have the ability to apply professional and technical knowledge in the workplace.

Suggestions

1. The algorithms related to industry should be taught to the students.
2. Provide some advanced software trainings to the students in order to get placed easily.



NANDHA ENGINEERING COLLEGE (Autonomous)

Affiliated to Anna University Chennai + Approved by AICTE + Accredited by NBA-NewDelhi

Pitchandampalayam, (P.O), Vaikkalmedu, Erode - Perundurai Road, Erode - 638 052

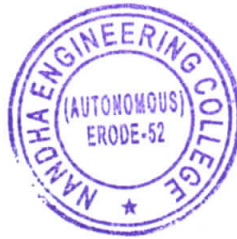
Phone : 04294-225585, 223711, 223722, 226393 Mobile : 73737 23722 Fax : 04294 - 224787

Website : www.nandhaengg.org

E.mail : info@nandhaengg.org

Action taken

1. It is planned to incorporate content of recent trends in the curriculum with the approval of forthcoming Board of Studies.
2. Training is given to the students through in-house companies and MoU signed industries.
3. Students are motivated to present papers in Conferences, Seminars, Workshops and various competitions to enhance the technical and subject knowledge




PRINCIPAL
Nandha Engineering College
(Autonomous)
Erode - 638 052.

Feedback Analysis and Action taken Report for Alumni



NANDHA ENGINEERING COLLEGE

(Autonomous)

Affiliated to Anna University Chennai * Approved by AICTE * Accredited by NBA-NewDelhi

Pitchandampalayam, (P.O), Vaikkalmedu, Erode - Perundurai Road, Erode - 638 052

Phone : 04294-225585, 223711, 223722, 226393 Mobile : 73737 23722 Fax : 04294 - 224787

Website : www.nandhaengg.org

E.mail : info@nandhaengg.org

FEEDBACK FROM ALUMNI ON SYLLABUS

ALUMNI FEEDBACK 20-21								
SURVEY COUNT : 505								
S.No	Feedback Question's	Excellent	Good	Fair	Poor	Total Weightage	Percentage	3-Scale Weightage
1	Academic initiatives taken by the college to improve technical or Industry required	134	308	43	20	1566	77.52%	2.326
2	Co-curricular initiatives taken by the college to improve the students technical /	136	293	56	20	1555	76.98%	2.309
3	Whether the Choice Based Credit System was in tune with the existing or emerging	144	290	56	15	1573	77.87%	2.336
4	Whether the Programme offered to you was suitably demanding the industrial needs?	105	294	80	26	1488	73.66%	2.210
5	Was the Syllabus prescribed for the programme are well organized and	153	283	52	17	1582	78.32%	2.350
6	Content of the courses (subjects) offered under my programme was up to date and	128	303	57	17	1552	76.83%	2.305
7	Project Work / Internships offered under my programme was challenging &	155	262	63	25	1557	77.08%	2.312
8	Open Elective courses offered were diverse and resourceful	184	257	48	16	1619	80.15%	2.404
9	Overall learning environment offered in the campus	174	272	43	16	1614	79.90%	2.397
OVER ALL PERCENTAGE						14106	77.59%	2.328




Dr.N.Rengarajan, B.Sc., B.Tech., M.E., Ph.D.,
PRINCIPAL
NANDHA ENGINEERING COLLEGE
(Autonomous)
ERODE - 638 052.



NANDHA ENGINEERING COLLEGE (Autonomous)

Affiliated to Anna University Chennai ✦ Approved by AICTE ✦ Accredited by NBA-NewDelhi

Pitchandampalayam, (P.O), Vaikkalmedu, Erode - Perundurai Road, Erode - 638 052

Phone : 04294-225585, 223711, 223722, 226393 Mobile : 73737 23722 Fax : 04294 - 224787

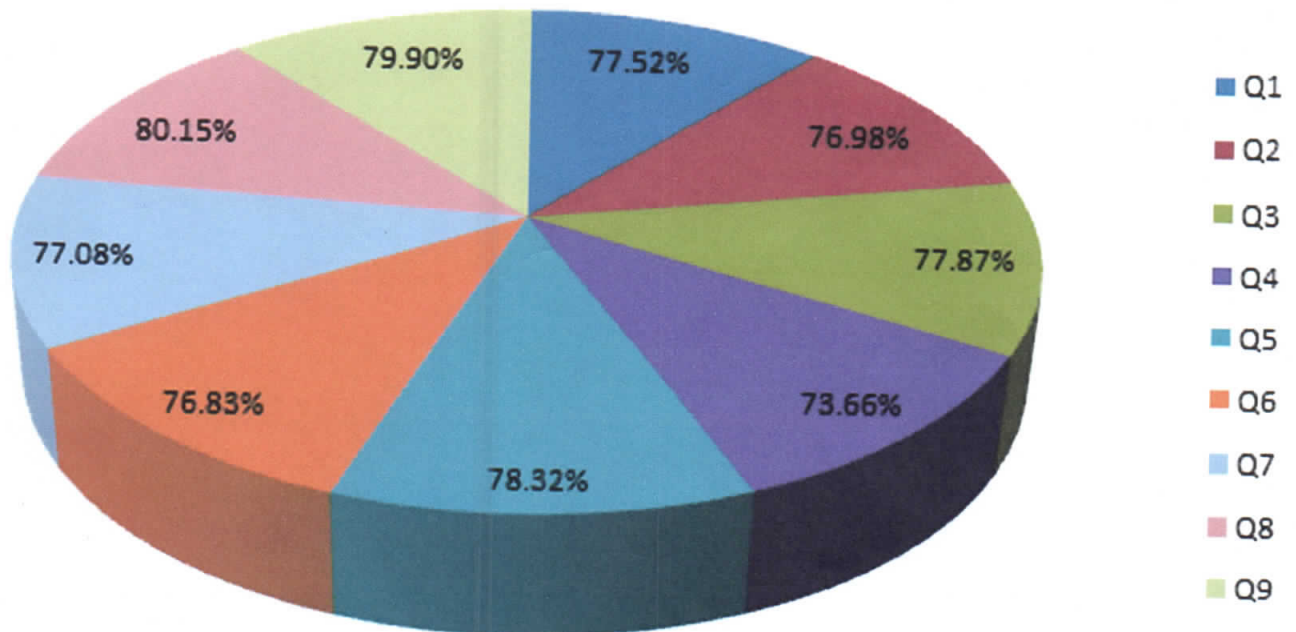
Website : www.nandhaengg.org


E.mail : info@nandhaengg.org

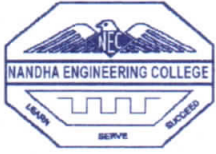
ALUMNI FEEDBACK REPORT ON CURRICULUM AND SYLLABUS -

(2020 - 2021)

ALUMNI FEEDBACK




Dr. N. Rengarajan, B.Sc., B.Tech., M.E., Ph.D.,
PRINCIPAL
NANDHA ENGINEERING COLLEGE
(Autonomous)
ERODE - 638 052.



NANDHA ENGINEERING COLLEGE

(Autonomous)

Affiliated to Anna University Chennai ✦ Approved by AICTE ✦ Accredited by NBA-NewDelhi

Pitchandampalayam, (P.O), Vaikkalmedu, Erode - Perundurai Road, Erode - 638 052

Phone : 04294-225585, 223711, 223722, 226393 Mobile : 73737 23722 Fax : 04294 - 224787

Website : www.nandhaengg.org

E.mail : info@nandhaengg.org

ALUMNI FEEDBACK REPORT ON CURRICULUM AND SYLLABUS – **(2020 – 2021) – QUESTIONS**

- 1.The Academic initiatives taken by the college to improve technical or Industry-required knowledge are sufficient.
- 2.The Co-curricular initiatives taken by the college to improve the student's technical/professional Skills.
- 3.Whether the Choice Based Credit System was in tune with the existing or emerging trends of the industry?
- 4.Whether the Programme offered to you was suitably demanding the industrial needs?
- 5.The syllabus prescribed for the program was well organized and structured?
- 6.Content of the courses (subjects) offered under my programme was up to date and relevant
- 7.Project Work / Internships offered under my programme was challenging & constructive
- 8.Open Elective courses offered were diverse and resourceful
- 9.Overall learning environment offered on the campus was excellent?




Dr.N.Rengarajan, B.Sc., B.Tech., M.E., Ph.D.,
PRINCIPAL
NANDHA ENGINEERING COLLEGE
(Autonomous)
ERODE - 638 052.



NANDHA ENGINEERING COLLEGE

(Autonomous)

Affiliated to Anna University Chennai + Approved by AICTE + Accredited by NBA-NewDelhi

Pitchandampalayam, (P.O), Vaikkalmedu, Erode - Perundurai Road, Erode - 638 052

Phone : 04294-225585, 223711, 223722, 226393 Mobile : 73737 23722 Fax : 04294 - 224787

Website : www.nandhaengg.org

E.mail : info@nandhaengg.org

ALUMNI FEEDBACK REPORT ON CURRICULUM AND SYLLABUS

ANALYSIS AND ACTION TAKEN REPORT

The College alumni committee collects feedback form from Alumni on various aspects of the curriculum. The questionnaire is intended to collect information relating to their satisfaction towards the curriculum, teaching, learning and evaluation.

Analysis

- 77.5% of alumni acknowledged that the academic efforts taken by the college to improve technical knowledge is sufficient.
- Alumni holds high regards in the initiatives of the Co-curricular initiatives taken by the college to develop the students' skills are excellent.
- Most of the alumni stated that the Choice Based Credit System is in tune with the existing or emerging trends of the industry.
- Alumni proposed that the courses offered are to be updated to meet out the industrial needs.
- Alumni opined that the Project Work / Internships offered under each programs are challenging and constructive.
- Further, alumni stated the effectiveness and productivity of the open elective courses offered by the college.

Suggestions

- Practical knowledge should be improved
- Concentrate more on internship to gain more technical knowledge.
- Conduct more practical classes to improve students skill set for core industries
- Extra-Curricular activities are to be given for the self-development of the students.
- Institute - Industrial Collaborations should be improved.



NANDHA ENGINEERING COLLEGE

(Autonomous)

Affiliated to Anna University Chennai + Approved by AICTE + Accredited by NBA-NewDelhi

Pitchandampalayam, (P.O), Vaikkalmedu, Erode - Perundurai Road, Erode - 638 052

Phone : 04294-225585, 223711, 223722, 226393 Mobile : 73737 23722 Fax : 04294 - 224787

Website : www.nandhaengg.org

E.mail : info@nandhaengg.org

Action taken

- Value added courses are organized to improve the practical skills
- The students have already undergone internship at various companies for their own benefit and more number of students will be send to internship in the forth coming year to come through continued encouragement and motivation.
- Much importance is given to extra-curricular activities by including PCD course in curriculum. Besides, the students are motivated to take part in inter college competitions.
- Planned to increase the MoUs with the core industries for the upcoming year.




PRINCIPAL
Nandha Engineering College
(Autonomous)
Erode - 638 052.