



NANDHA ENGINEERING COLLEGE

(Autonomous)

Affiliated to Anna University Chennai * Approved by AICTE * Accredited by NAAC (A+ Grade)

Pitchandampalayam (P.O), Vaikkalmedu, Erode - Perundurai Road, Erode - 638 052

Phone : 04294 - 225585, 223711, 223722, 226393 Mobile : 73737 23722 Fax : 04294 - 224787

Website : www.nandhaengg.org

E.mail : info@nandhaengg.org

STUDENTS FEEDBACK ON CURRICULAM AND SYLLABUS

SURVEY COUNT : 61							
S.No	Feedback Questions	Excellent	Good	Fair	Poor	Total Weightage	Percentage
1.	The curriculum and syllabus are well organized and easy to follow	6	48	6	1	181	74
2.	Is the entire syllabus covered by the faculty?	14	43	3	1	192	79
3.	Laboratory exercise improve my ability to understand concepts and helps to relate and apply theory to practice	11	41	8	1	184	75
4.	The depth of the syllabus is proportional to course outcomes	11	42	7	1	185	76
5.	The correct credit were allocated to the course depending on the difficulty of the course	11	44	5	1	187	77
6.	The syllabus provide the necessary skill set required by the industry	9	36	14	2	174	71
7.	The books prescribed as reference material are relevant, updated and appropriate	10	42	8	1	183	75
8.	The elective offered are pertinent to the specification streams and to technology advancements	8	40	12	1	177	73
9.	Is the syllabus career oriented?	10	46	4	1	187	77
10.	Is the pre-requisite course appropriate?	7	44	9	1	179	73
11.	Does the teacher provide examples of concepts/ principles, description effectively?	17	38	5	1	193	79

V. Sundar
Head of the Department
Department of Agriculture Engineering
Nandha Engineering College,
(Autonomous)
Erode - 638 052.



M. K. Srinivasan
PRINCIPAL
Nandha Engineering College
(Autonomous)
Erode - 638 052.



NANDHA ENGINEERING COLLEGE (Autonomous)

Affiliated to Anna University Chennai * Approved by AICTE * Accredited by NAAC (A+ Grade)

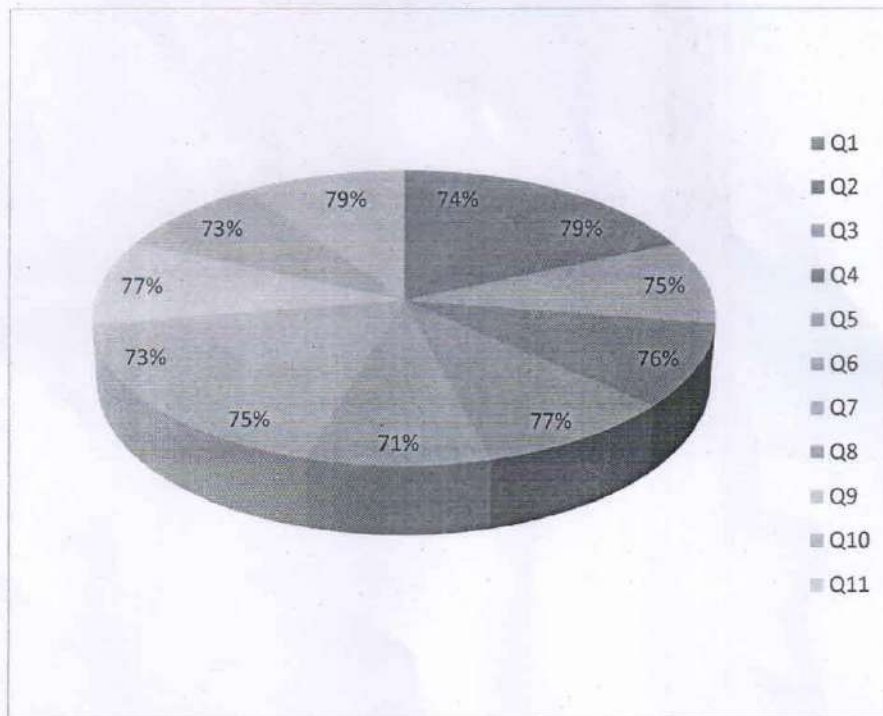
Pitchandampalayam (P.O), Vaikkalmedu, Erode - Perundurai Road, Erode - 638 052

Phone : 04294 - 225585, 223711, 223722, 226393 Mobile : 73737 23722 Fax : 04294 - 224787

Website : www.nandhaengg.org

E.mail : info@nandhaengg.org

STUDENT FEEDBACK REPORT ON CURRICULUM AND SYLLABUS



Dr. S. Senthil
Head of the Department
Department of Agriculture Engineering
Nandha Engineering College,
(Autonomous)
Erode - 638 052.



M. Senthil
PRINCIPAL
Nandha Engineering College
(Autonomous)
Erode - 638 052.



NANDHA ENGINEERING COLLEGE (Autonomous)

Affiliated to Anna University Chennai * Approved by AICTE * Accredited by NAAC (A+ Grade)

Pitchchandampalayam (P.O), Vaikkalmedu, Erode - Perundurai Road, Erode - 638 052

Phone : 04294 - 225585, 223711, 223722, 226393 Mobile : 73737 23722 Fax : 04294 - 224787

Website : www.nandhaengg.org

E.mail : Info@nandhaengg.org

STUDENT FEEDBACK REPORT ON CURRICULUM AND SYLLABUS ANALYSIS AND ACTION TAKEN REPORT

Feedback from the students is collected to improve the teaching and learning process.

Analysis

- The syllabus provides the necessary skill set required by the industry.
- The hands-on approach enhances student comprehension and practical skills.
- Effective communication of concepts is crucial for student understanding.

Suggestions

Maintain and possibly expand the use of practical exercises.

Action taken

- The workshops and training sessions are conducted to improve indepth knowledge of courses.
- More internship and industrial training given to the students.

S. S. Srinivasan
Head of the Department
Department of Agriculture Engineering
Nandha Engineering College,
(Autonomous)
Erode - 638 052.



A. S. Srinivasan
PRINCIPAL
Nandha Engineering College
(Autonomous)
Erode - 638 052.



NANDHA ENGINEERING COLLEGE

(Autonomous)

Affiliated to Anna University Chennai ♦ Approved by AICTE ♦ Accredited by NBA - New Delhi

Pitchandampalayam (P.O), Vaikkalmedu, Erode - Perundurai Road, Erode - 638 052

Phone : 04294 - 225585, 223711, 223722, 226393 Mobile : 73737 23722 Fax : 04294 - 224787

Website : www.nandhaengg.org

E.mail : info@nandhaengg.org

FACULTY FEEDBACK ON CURRICULAM AND SYLLABUS

Survey Count: 10

S.No	Feedback Questions	Excellent	Good	Fair	Poor	Total Weightage	Percentage
1	Curriculum and syllabus on par with recent trends	0	9	1	0	29	73
2	Elucidation of course outcomes	4	4	2	0	32	80
3	Adequacy of Academic tasks in the course plan	2	5	2	1	28	70
4	Syllabus in accordance with competitive examinations	2	4	4	0	28	70
5	Importance and relevance of the course to industry and societal needs	1	6	3	0	28	70
6	Accessibility of relevant reading Materials and E-sources in the library	5	3	2	0	33	83
7	Course equilibrium between theory and application	0	6	4	0	26	65
8	Privilege to propose, modify, suggest and incorporate new topics in the syllabus through proper forum	1	5	4	0	27	68
9	Flexibility in adopting new techniques/ tools strategies in reaching	2	2	4	2	24	60
10	Scope provided for research activities	2	7	1	0	31	78

V. Sundar

Head of the Department
Department of Agriculture Engineering
Nandha Engineering College,
(Autonomous)
Erode - 638 052.



N. Anand

PRINCIPAL
Nandha Engineering College
(Autonomous)
Erode - 638 052.



NANDHA ENGINEERING COLLEGE (Autonomous)

Affiliated to Anna University Chennai + Approved by AICTE + Accredited by NBA - New Delhi

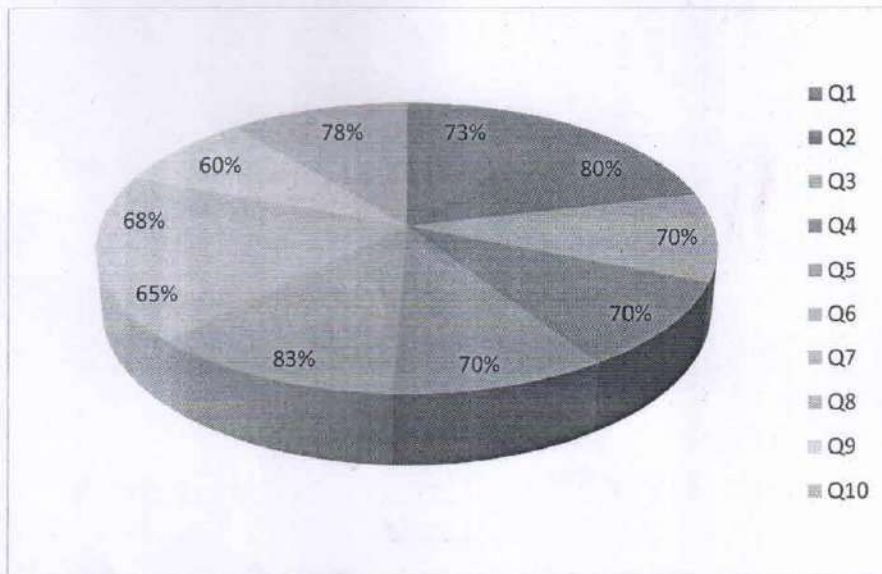
Pitchchandampalayam (P.O), Vaikkalmedu, Erode - Perundurai Road, Erode - 638 052

Phone : 04294 - 225585, 223711, 223722, 226393 Mobile : 73737 23722 Fax : 04294 - 224787

Website : www.nandhaengg.org

E.mail : info@nandhaengg.org

FACULTY FEEDBACK ON CURRICULAM AND SYLLABUS



[Handwritten Signature]

Head of the Department
Department of Agriculture Engineering
Nandha Engineering College,
(Autonomous)
Erode - 638 052.



[Handwritten Signature]

PRINCIPAL
Nandha Engineering College
(Autonomous)
Erode 638 052.



NANDHA ENGINEERING COLLEGE (Autonomous)

Affiliated to Anna University Chennai ✦ Approved by AICTE ✦ Accredited by NBA - New Delhi

Pitchandampalayam (P.O), Vaikkaalmedu, Erode - Perundurai Road, Erode - 638 052

Phone : 04294 - 225585, 223711, 223722, 226393 Mobile : 73737 23722 Fax : 04294 - 224787

Website : www.nandhaengg.org

E.mail : info@nandhaengg.org

FACULTY FEEDBACK REPORT ON CURRICULUM AND SYLLABUS ANALYSIS AND ACTION TAKEN REPORT

Following are the analyses and suggestions given by the faculty members:

Analysis:

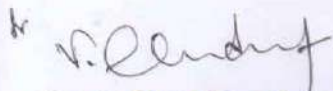
- The majority of faculty members strongly agreed that the curriculum and syllabus were on par with recent trends and had relevance to industry and social needs.
- Elucidation of course outcomes is adequately done.
- The learning resource materials available in the library are adequate and accessible.
- Faculty has enough freedom through the Board of Studies, which has the privilege to propose, modify, suggest, and include new topics in the syllabus.
- I appreciated the flexibility given to them to adopt new techniques, tools, and strategies in teaching to improve the teaching and learning process.

Suggestions:

- Our faculty members, academic experts, and industry experts suggested to include electrical and machine design concepts in curriculum.

Action taken:

The courses Electrical Engineering, Basic Workshop Technology, Workshop Technology Laboratory were included in the R22 curriculum.



Head of the Department
Department of Agriculture Engineering
Nandha Engineering College,
(Autonomous)
Erode - 638 052.





PRINCIPAL
Nandha Engineering College
(Autonomous)
Erode - 638 052.



NANDHA ENGINEERING COLLEGE

(Autonomous)

Affiliated to Anna University Chennai * Approved by AICTE * Accredited by NBA - New Delhi

Pitchandampalayam (P.O), Vaikkalmedu, Erode - Perundurai Road, Erode - 638 052

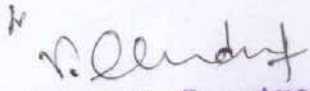
Phone : 04294 - 225585, 223711, 223722, 226393 Mobile : 73737 23722 Fax : 04294 - 224787

Website : www.nandhaengg.org

E.mail : info@nandhaengg.org

ALUMINI FEEDBACK ON CURRICULAM AND SYLLABUS

SURVEY COUNT: 52							
S.No	Feedback Questions	Excellent	Good	Fair	Poor	Total Weightage	Percentage
1.	Academic initiatives taken by the college to improve technical or industry required knowledge is sufficient.	4	26	15	7	131	63
2.	Co-curricular initiatives taken by the college to improve the students technical/ professional skills.	6	32	8	6	142	68
3.	Whether the Choice Based Credit System was in tune with the existing or emerging trends of the industry.	4	29	14	5	136	65
4.	Whether the Programme offered to you was suitably demanding the industrial need.	3	29	14	6	133	64
5.	Was the Syllabus prescribed for the programme are well organized and structured?	4	32	10	6	138	66
6.	Content of the courses (subjects) offered under my programme was up to date and relevant.	7	33	9	3	148	71
7.	Project work / Internships offered under my programme was challenging and constructive.	8	25	14	5	140	67
8.	Open Elective courses offered were diverse and resourceful.	9	31	9	3	150	72
9.	Overall learning environment offered in the campus.	4	31	13	4	139	67


Head of the Department
Department of Agriculture Engineering
Nandha Engineering College,
(Autonomous)
Erode - 638 052.




PRINCIPAL
Nandha Engineering Collage
(Autonomous)
Erode - 638 052.

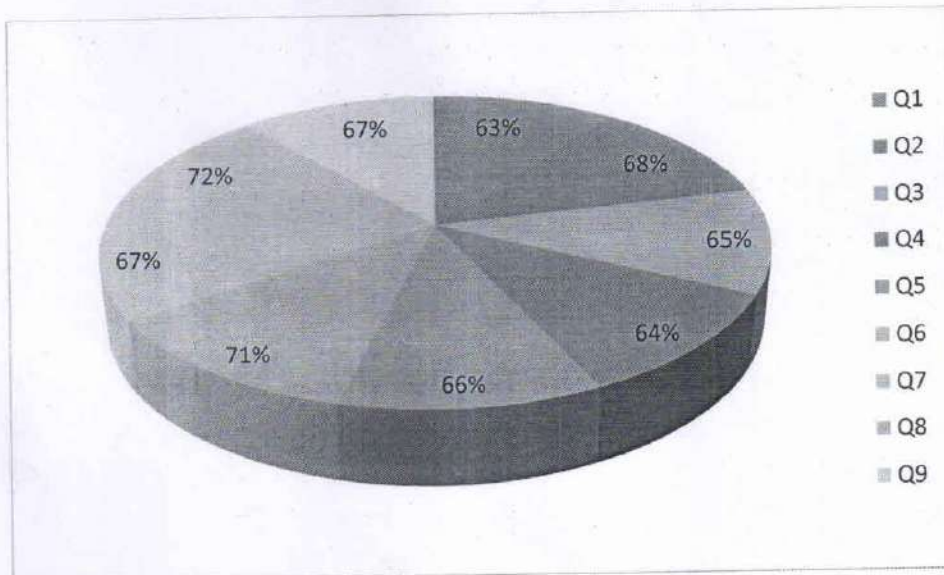


NANDHA ENGINEERING COLLEGE (Autonomous)

Affiliated to Anna University Chennai + Approved by AICTE + Accredited by NBA - New Delhi
Pitchchandampalayam (P.O), Vaikkalmedu, Erode - Perundurai Road, Erode - 638 052
Phone : 04294 - 225585, 223711, 223722, 226393 Mobile : 73737 23722 Fax : 04294 - 224787
E.mail : info@nandhaengg.org

Website : www.nandhaengg.org

ALUMNI FEEDBACK REPORT ON CURRICULUM AND SYLLABUS



S. Srinivasan

Head of the Department
Department of Agriculture Engineering
Nandha Engineering College,
(Autonomous)
Erode - 638 052.



N. Srinivasan

PRINCIPAL
Nandha Engineering College
(Autonomous)
Erode - 638 052.



NANDHA ENGINEERING COLLEGE

(Autonomous)

Affiliated to Anna University Chennai * Approved by AICTE * Accredited by NBA - New Delhi

Pitchandampalayam (P.O), Vaikkalmedu, Erode - Perundurai Road, Erode - 638 052

Phone : 04294 - 225585, 223711, 223722, 226393 Mobile : 73737 23722 Fax : 04294 - 224787

Website : www.nandhaengg.org

E.mail : info@nandhaengg.org

ALUMNI FEEDBACK REPORT ON CURRICULUM AND SYLLABUS

ANALYSIS AND ACTION TAKEN REPORT

Following are the analyses and suggestions that are given by the alumni to our department:

Analysis:


- The analysis of the alumni feedback clearly indicates that they are well satisfied with the curriculum development and revision.
- The students highly appreciated the academic-related infrastructural facilities, such as libraries, laboratories, and fields.
- Some subjects need to be include to increase theoretical knowledge as well as practical knowledge to meet the demands of industrial needs.

Suggestion:

- More number of industrial seminars are needed.
- Suggest to provide industry-related subjects.

Action taken

- The industrial seminars and workshops are conducted with the help of Sai Irrigation company.
- Students undergone internship in various industries.


Head of the Department
Department of Agriculture Engineering
Nandha Engineering College,
(Autonomous)
Erode - 638 052.




PRINCIPAL
Nandha Engineering College
(Autonomous)
Erode - 638 052.



NANDHA ENGINEERING COLLEGE

(Autonomous)

Affiliated to Anna University Chennai * Approved by AICTE * Accredited by NBA - New Delhi

Pitchchandampalayam (P.O), Vaikkalmedu, Erode - Perundurai Road, Erode - 638 052

Phone : 04294 - 225585, 223711, 223722, 226393 Mobile : 73737 23722 Fax : 04294 - 224787

Website : www.nandhaengg.org

E.mail : info@nandhaengg.org

EMPLOYER FEEDBACK ON CURRICULAM AND SYLLABUS

Survey Count: 15

S.No	Feedback Questions	Excellent	Good	Fair	Poor	Total Weightage	Percentage
1.	Satisfaction with the calibre of the graduates.	2	9	2	2	41	68
2.	Satisfaction that graduates are learning the right skills /courses relevant to your organisation requirements.	2	7	3	3	38	63
3.	Satisfaction with the speed at which course content is being adapted to meet the changing industrial needs.	3	8	3	1	43	72
4.	Institutional Reputation.	2	9	3	1	42	70
5.	Relevant subject or Discipline Knowledge.	2	8	4	1	41	68
6.	Quality of Employability Skills and Attributes of our graduates.	2	7	3	3	38	63
7.	The institution produces high quality graduates.	2	7	4	2	39	65
8.	Successful past experience of recruiting from this institution.	2	6	4	3	37	62
9.	Organisation and institution collaborate on joint research projects.	2	7	5	1	40	67
10.	Ability to apply professional and / or technical knowledge in the workplace.	2	9	3	1	42	70

[Signature]

Head of the Department
Department of Agriculture Engineering
Nandha Engineering College,



[Signature]
PRINCIPAL
Nandha Engineering College
(Autonomous)



NANDHA ENGINEERING COLLEGE (Autonomous)

Affiliated to Anna University Chennai + Approved by AICTE + Accredited by NBA - New Delhi

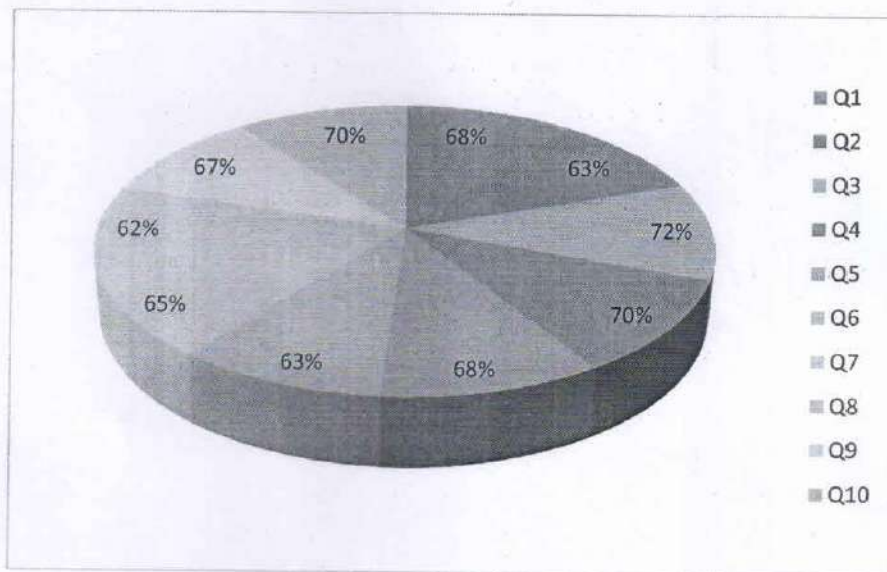
Pitchandampalayam (P.O), Vaikkalmedu, Erode - Perundurai Road, Erode - 638 052

Phone : 04294 - 225585, 223711, 223722, 226393 Mobile : 73737 23722 Fax : 04294 - 224787

Website : www.nandhaengg.org

E.mail : info@nandhaengg.org

EMPLOYER FEEDBACK REPORT ON CURRICULUM AND SYLLABUS



Dr. S. S. Srinivasan

Head of the Department
Department of Agriculture Engineering
Nandha Engineering College,
(Autonomous)
Erode - 638 052.



[Signature]

PRINCIPAL
Nandha Engineering College
(Autonomous)
Erode - 638 052.



NANDHA ENGINEERING COLLEGE (Autonomous)

Affiliated to Anna University Chennai + Approved by AICTE + Accredited by NBA - New Delhi
Pitchchandampalayam (P.O), Valkkalmedu, Erode - Perundurai Road, Erode - 638 052
Phone : 04294 - 225585, 223711, 223722, 226393 Mobile : 73737 23722 Fax : 04294 - 224787
E.mail : info@nandhaengg.org

Website : www.nandhaengg.org

EMPLOYER FEEDBACK REPORT ON CURRICULUM AND SYLLABUS ANALYSIS AND ACTION TAKEN REPORT

Points of Analysis

Most of the employers have expressed that

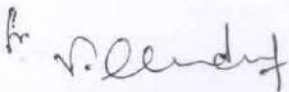
- Assess employer satisfaction with the caliber of graduates.
- The reputation of the institution is closely tied to the quality of its graduates.
- Our graduates possess employable skills.
- Our graduates are able to apply their technical knowledge in their workplace.

Suggestions:

- Incorporate soft skills training and professional development into the curriculum.
- Industry-based project work may be given to the students.

Action Taken:

- A project-based learning are included as subject.
- The internship program has been conducted, and industry-based projects are encouraged.
- Students are motivated to do industrial project in VIII semester.



Head of the Department
Department of Agriculture Engineering
Nandha Engineering College,
(Autonomous)
Erode - 638 052.





PRINCIPAL
Nandha Engineering College
(Autonomous)
Erode - 638 052.