



NANDHA ENGINEERING COLLEGE

(Autonomous)

Affiliated to Anna University Chennai + Approved by AICTE + Accredited by NBA-New Delhi

Pitchandampalayam, (P.O), Valkkalmedu, Erode - Perundurai Road, Erode - 638 052

Phone : 04294-225585, 223711, 223722, 226393 Mobile : 73737 23722 Fax : 04294 - 224787

Website : www.nandhaengg.org

E.mail : info@nandhaengg.org

STUDENTS FEEDBACK ON CURRICULUM AND SYLLABUS (2022-2023)

SURVEY DETAILS

SURVEY COUNT:216								
S.No	Question's	Excellent	Good	Fair	Poor	Total Weightage	Percentage	3-Scale Weightage
1	The curriculum and syllabus are well organized and easy to follow	86	115	15	0	719	83.25	2.50
2	Is the entire syllabus covered by the faculty?	92	101	21	2	715	82.77	2.48
3	Laboratory exercise improve my ability to understand concepts and helps to relate and apply theory to practice	90	103	17	6	709	82.04	2.46
4	The depth of the syllabus is proportional to course course outcomes	86	113	8	8	709	82.04	2.46
5	The correct credit were allocated to the course depending on the difficulty of the course	92	109	13	2	723	83.74	2.51
6	The syllabus provide the necessary skill set required by the industry	88	109	13	6	711	82.28	2.47
7	The books prescribed as reference material are relevant, updated and appropriate	92	111	6	6	721	83.50	2.50
8	The elective offered are pertinent to the specification streams and to technology advancements	90	113	6	6	719	83.25	2.50
9	Is the syllabus career oriented?	82	109	19	6	698	80.83	2.42
10	Is the pre-requisite course appropriate?	84	107	21	4	703	81.31	2.44
11	Does the teacher provide examples of concepts/ principles, description effectively?	113	90	4	8	740	85.68	2.57
AVERAGE SCORE						715	82.79	2.48

PRINCIPAL

Nandha Engineering College

(Autonomous)

Erode - 638 052.

Handwritten signature in blue ink.

**HEAD OF THE DEPT,
DEPT OF ELECTRICAL & ELECTRONICS ENGG,
NANDHA ENGG COLLEGE**



NANDHA ENGINEERING COLLEGE (Autonomous)

Affiliated to Anna University Chennai ♦ Approved by AICTE ♦ Accredited by NBA New Delhi

Pitchandampalayam, (P.O), Valkkalmedu, Erode - Perundurai Road, Erode - 638 052

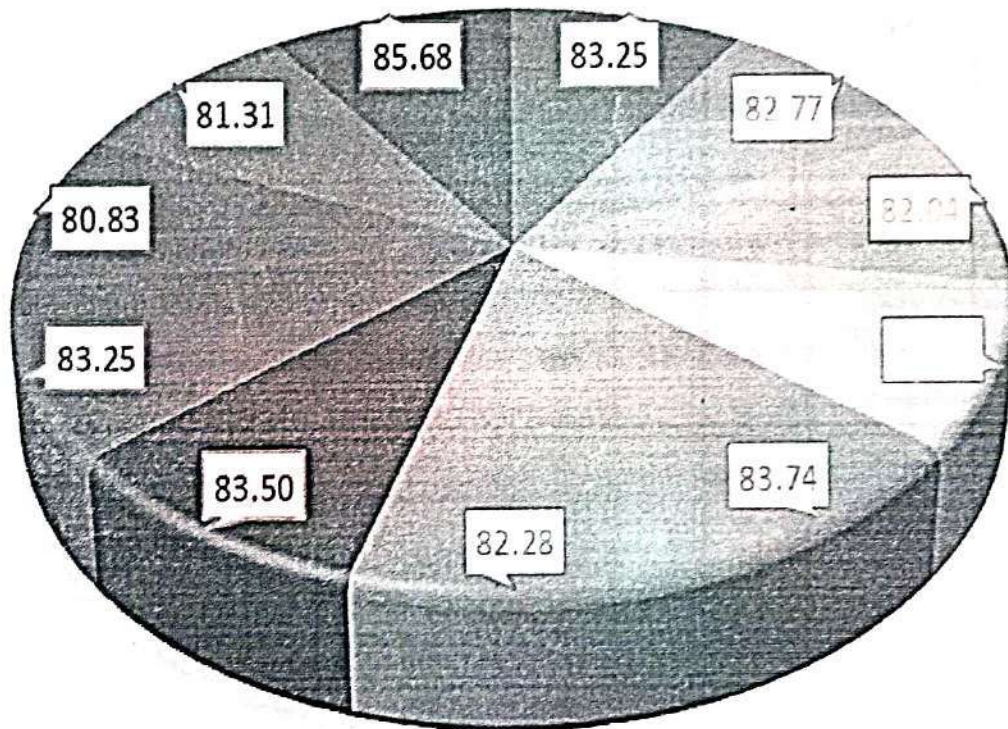
Phone : 04294-225585, 223711, 223722, 226393 Mobile : 73737 23722 Fax : 04294 - 224787

Website : www.nandhaengg.org

E.mail : info@nandhaengg.org

STUDENTS FEEDBACK ON CURRICULUM AND SYLLABUS (2022-2023)

STUDENTS FEEDBACK



- HQ1
- HQ2
- HQ3
- HQ4
- HQ5
- HQ6
- HQ7
- HQ8
- HQ9
- HQ10
- HQ11

A. S. S.
18/12/23

**HEAD OF THE DEPT,
DEPT OF ELECTRICAL & ELECTRONICS ENGG
NANDHA ENGG COLLEGE.
ERODE - 638 052.**

PRINCIPAL
Nandha Engineering College
(Autonomous)
Erode - 638 052.



NANDHA ENGINEERING COLLEGE (Autonomous)

Affiliated to Anna University Chennai + Approved by AICTE + Accredited by NBA New Delhi

Pitchandampalayam, (P.O), Valkkalmedu, Erode - Perundural Road, Erode - 638 052

Phone : 04294-225585, 223711, 223722, 226393 Mobile : 73737 23722 Fax : 04294 - 224787

Website : www.nandhaengg.org

E.mail : Info@nandhaengg.org

Students Feedback on Curriculum and Syllabus

Analysis and Action Taken Report

In higher education institutions, students are the most important stakeholders. Students' involvement and engagement at all levels, including internal and external quality assurance, must be prioritised. We collected online comments from 216 students on the EEE department's curriculum and syllabus.

- 83.25% of students acknowledge the well-organized and easy-to-follow nature of the curriculum and syllabus.
- 82.04% of students find laboratory exercises beneficial, improving their ability to understand concepts and apply theory to practice. Some students, however, express concerns (17.96%) about the depth of the syllabus in relation to course outcomes.
- 85.68% of students express satisfaction with the teaching effectiveness, as demonstrated by faculty providing examples of concepts and principles effectively.

Suggestions from students

1. Increase practical exercises diversity to further enhance hands-on learning experiences.
2. Integrate more real-world industry projects to enhance practical relevance and industry alignment.

Action Taken

1. The suggestions are discussed in the Principal's meeting along with Heads of the department and they assured to take immediate steps and make it viable.
2. The faculty is actively implementing an expanded range of practical exercises and integrating real-world projects through industry partnerships, with plans to further increase these initiatives in the future, enhancing hands-on learning and industry relevance.

Principal

PRINCIPAL
Nandha Engineering College
(Autonomous)
Erode - 638 052.

66/1
(8/12/23)
**HEAD OF THE DEPT.,
DEPT OF ELECTRICAL & ELECTRONICS ENGG
NANDHA ENGG COLLEGE
ERODE - 638 052.**



NANDHA ENGINEERING COLLEGE (Autonomous)

Affiliated to Anna University Chennai * Approved by AICTE * Accredited by NBA New Delhi

Pitchandampalayam, (P.O), Vaikkalmedu, Erode - Perundurai Road, Erode - 638 052

Phone : 04294-225585, 223711, 223722, 226393 Mobile : 73737 23722 Fax : 04294 - 224787

Website : www.nandhaengg.org

E.mail : info@nandhaengg.org

ALUMNI FEEDBACK ON CURRICULUM AND SYLLABUS (2022-2023) SURVEY DETAILS

SURVEY COUNT:55								
S.No	Question's	Excellent	Good	Fair	Poor	Total Weightage	Percentage	3-Scale Weightage
1	Academic initiatives taken by the college to improve technical or industry required knowledge is sufficient	20	30	5	0	180	81.82	2.45
2	Co-curricular initiatives taken by the college to improve the students technical/ professional skills	18	29	7	1	174	79.09	2.37
3	Whether the Choice Based Credit System was in tune with the existing or emerging trends of the industry	16	32	7	0	174	79.09	2.37
4	Whether the Programme offered to you was suitably demanding the industrial need	17	31	7	0	175	79.55	2.39
5	Was the Syllabus prescribed for the programme are well organized and structured?	21	28	6	0	180	81.82	2.45
6	Content of the courses (subjects) offered under my programme was up to date and relevant	15	35	5	0	175	79.55	2.39
7	Project work / Internships offered under my programme was challenging and constructive	18	33	3	1	178	80.91	2.43
8	Open Elective courses offered were diverse and resourceful	24	26	5	0	184	83.64	2.51
9	Overall learning environment offered in the campus	20	30	5	0	180	81.82	2.45
AVERAGE						178	80.81	2.42

PRINCIPAL
Nandha Engineering College
(Autonomous)
Erode - 638 052.

6/4/2023
HEAD OF THE DEPT,
DEPT OF ELECTRICAL & ELECTRONICS ENGG.
NANDHA ENGG COLLEGE.
ERODE - 638 052.



NANDHA ENGINEERING COLLEGE (Autonomous)

Affiliated to Anna University Chennai + Approved by AICTE + Accredited by NBA-NewDelhi

Pitchandampalayam, (P.O), Valkkalmodu, Erode - Porundurai Road, Erode - 638 052

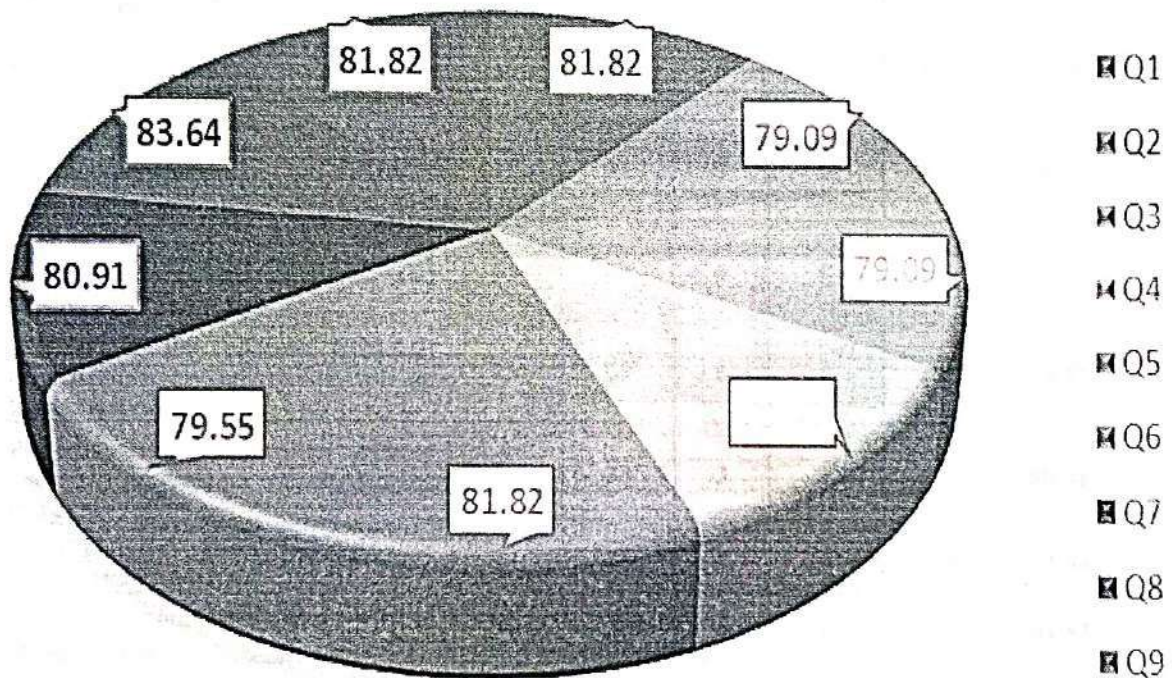
Phone : 04294-225585, 223711, 223722, 226393 Mobile : 73737 23722 Fax : 04294 - 224787

Website : www.nandhaengg.org

E.mail : Info@nandhaengg.org

ALUMNI FEEDBACK ON CURRICULUM AND SYLLABUS (2022-2023)

ALUMNI FEEDBACK



A.P.
18/10/23

**HEAD OF THE DEPT,
DEPT OF ELECTRICAL & ELECTRONICS ENGG
NANDHA ENGG COLLEGE
ERODE - 638 052.**

[Signature]

PRINCIPAL
Nandha Engineering College
(Autonomous)
Erode - 638 052.



NANDHA ENGINEERING COLLEGE (Autonomous)

Affiliated to Anna University Chennai + Approved by AICTE + Accredited by NBA New Delhi

Pitchandampalayam, (P.O), Valkkalmedu, Erode - Perundural Road, Erode - 638 052

Phone : 04294-225585, 223711, 223722, 226393 Mobile : 73737 23722 Fax : 04294 - 224787

Website : www.nandhaengg.org

E.mail : info@nandhaengg.org

Alumni Feedback on Curriculum and Syllabus

Analysis and Action Taken Report

The goal of this feedback is to gather alumni feedback on the quality of education they got and the degree of preparation they acquired at college, as well as to analyse the academic program's quality. This questionnaire is designed to gather information on your satisfaction with the curriculum, teaching, learning, and evaluation. The college's Alumni Committee receives feedback from alumni on a variety of topics of the curriculum covered. The resulting input is then analyzed by the Committee and shared with the Principal, IQAC, and faculty for discussion.

- 83.64 % of Alumni accepted the Open Elective courses offered were diverse and resourceful
- 79.09 % of alumni accepted the Choice Based Credit System was in tune with the existing or emerging trends of the industry
- Most of the alumni accepted that Content of the courses (subjects) offered under my programme was up to date and relevant and Project Work / Internships offered under my programme was challenging & constructive

Suggestions from Alumni's:

- Alumni's stated that more number of industry oriented courses shall be introduced to enhance the students technical knowledge
- It is also recommended that introduction of recent technology courses shall be incorporated in the curriculum to support student project activity.

Action taken:

- The alumni feedback analysis report reveals that majority of the alumni are happy and proud to be a part of this institution.
- Decided to implement various innovative method of teaching in accordance with the present progress.

Principal

PRINCIPAL
Nandha Engineering College
(Autonomous)
Erode - 638 052.

Handwritten initials and date: ALK 18/11/14

**HEAD OF THE DEPT,
DEPT OF ELECTRICAL & ELECTRONICS ENGG
NANDHA ENGG COLLEGE,
ERODE - 638 052.**



NANDHA ENGINEERING COLLEGE (Autonomous)

Affiliated to Anna University Chennai ♦ Approved by AICTE ♦ Accredited by NBA-New Delhi

Pitchandampalayam, (P.O), Vaikkalmedu, Erode - Perundurai Road, Erode - 638 052

Phone : 04294-225585, 223711, 223722, 226393 Mobile : 73737 23722 Fax : 04294 - 224787

E.mail : info@nandhaengg.org

Website : www.nandhaengg.org

FACULTY FEEDBACK ON CURRICULUM AND SYLLABUS (2022-2023) SURVEY DETAILS

								SURVEY COUNT:14	
S.No	Question's	Excellent	Good	Fair	Poor	Total Weightage	Percentage	3-Scale Weightage	
1	Curriculum and syllabus on par with recent trends	10	4	0	0	52	92.86	2.79	
2	Elucidation of course outcomes	8	5	1	0	49	87.50	2.63	
3	Adequacy of Academic tasks in the course plan	9	5	0	0	51	91.07	2.73	
4	Syllabus in accordance with competitive examinations	5	8	1	0	46	82.14	2.46	
5	Importance and relevance of the course to industry and societal needs	7	6	1	0	48	85.71	2.57	
6	Accessibility of relevant reading Materials and E-sources in the library	9	5	0	0	51	91.07	2.73	
7	Course equilibrium between theory and application	8	4	2	0	48	85.71	2.57	
8	Privilege to propose, modify, suggest and incorporate new topics in the syllabus through proper forum	6	8	0	0	48	85.71	2.57	
9	Flexibility in adopting new techniques/ tools strategies in reaching	7	5	2	0	47	83.93	2.52	
10	Scope provided for research activities	4	9	1	0	45	80.36	2.41	
AVERAGE						49	86.61	2.60	

Handwritten signature

HEAD OF THE DEPT,
DEPT OF ELECTRICAL & ELECTRONICS ENGG
NANDHA ENGG COLLEGE.
ERODE - 638 052.

Handwritten signature

PRINCIPAL
Nandha Engineering College
(Autonomous)
Erode - 638 052.



NANDHA ENGINEERING COLLEGE (Autonomous)

Affiliated to Anna University Chennai + Approved by AICTE + Accredited by NBA-New Delhi

Pitchandampalayam, (P.O), Vaikkalmedu, Erode - Perundurai Road, Erode - 638 052

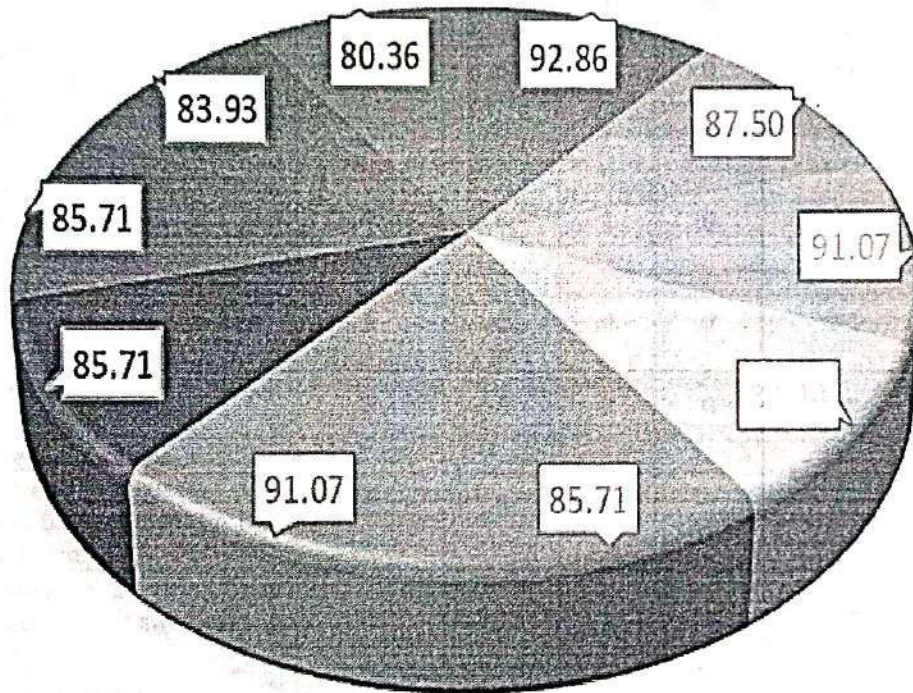
Phone : 04294-225585, 223711, 223722, 226393 Mobile : 73737 23722 Fax : 04294 - 224787

Website : www.nandhaengg.org

E.mail : Info@nandhaengg.org

FACULTY FEEDBACK ON CURRICULUM AND SYLLABUS (2022-2023)

FACULTY FEEDBACK



- Q1
- Q2
- Q3
- Q4
- Q5
- Q6
- Q7
- Q8
- Q9
- Q10

Handwritten signature

HEAD OF THE DEPT,
DEPT OF ELECTRICAL & ELECTRONICS ENGG.
VANDHA ENGG COLLEGE.
ERODE - 638 052.

Handwritten signature

PRINCIPAL
Nandha Engineering College
(Autonomous)
Erode - 638 052.



NANDHA ENGINEERING COLLEGE (Autonomous)

Affiliated to Anna University Chennai + Approved by AICTE + Accredited by NBA-NewDelhi

Pitchandampalayam, (P.O), Valkkalmedu, Erode - Perundurai Road, Erode - 638 052

Phone : 04294-225585, 223711, 223722, 226393 Mobile : 73737 23722 Fax : 04294 - 224787

Website : www.nandhaengg.org

E.mail : Info@nandhaengg.org

Faculty Feedback on Curriculum and Syllabus

Analysis and Action Taken Report

Analysis:

- Strong consensus (92.86%) among faculty on curriculum alignment with recent trends, reflecting proactive educational adaptation.
- High appreciation (87.50%) for the clear elucidation of course outcomes, indicating effective communication of learning objectives.
- Positive feedback (91.07%) on the well-structured curriculum with adequate academic tasks, fostering an enriched learning experience.

Suggestions:

- Introduce interdisciplinary components to the curriculum to further enrich the learning experience and provide students with a holistic understanding of their field.
- Continue to strengthen collaborations with industry stakeholders, maintaining a commitment to real-world relevance by consistently integrating guest lectures from industry experts and industry-driven projects into the curriculum

Action taken:

We acknowledge and appreciate the positive feedback from faculty members regarding the flexibility in shaping the curriculum and syllabus. We are committed to maintaining these effective practices in the future.

PRINCIPAL
Nandha Engineering College
(Autonomous)
Erode - 638 052.

Handwritten initials: HJ 18/12/14.

**HEAD OF THE DEPT,
DEPT OF ELECTRICAL & ELECTRONICS ENGG
NANDHA ENGG COLLEGE,
ERODE - 638 052.**



NANDHA ENGINEERING COLLEGE (Autonomous)

Affiliated to Anna University Chennai + Approved by AICTE + Accredited by NBA-NewDelhi

Pitchandampalayam, (P.O), Valkkalmedu, Erode - Perundural Road, Erode - 638 052

Phone : 04294-225585, 223711, 223722, 226393 Mobile : 73737 23722 Fax : 04294 - 224787


Website : www.nandhaengg.org

E.mail : info@nandhaengg.org

Employer Feedback on Curriculum and Syllabus SURVEY DETAILS

							SURVEY COUNT:09	
S.No	Question's	Excellent	Good	Fair	Poor	Total Weightage	Percentage	3-Scale Weightage
1	Satisfaction with the caliber of the graduates	7	2	0	0	34	94.44	2.83
2	Satisfaction that graduates are learning the right skills/courses relevant to your organisation's requirements	8	1	0	0	35	97.22	2.92
3	Satisfaction with the speed at which course content is being adapted to meet the changing industrial needs	6	2	1	0	32	88.89	2.67
4	Institutional Reputation	7	2	0	0	34	94.44	2.83
5	Relevant subject or Discipline Knowledge	6	3	0	0	33	91.67	2.75
6	Quality of Employability Skills and Attributes of our graduates	5	2	2	0	30	83.33	2.50
7	The institution produces high quality graduates	7	1	1	0	33	91.67	2.75
8	Successful past experience of recruiting from this institution	8	1	0	0	35	97.22	2.92
9	Organisation and institution collaborate on joint research projects	5	1	3	0	29	80.56	2.42
10	Ability to apply professional and / or technical knowledge in the workplace	7	1	1	0	33	91.67	2.75
AVERAGE						33	91.11	2.73


PRINCIPAL
 Nandha Engineering College
 (Autonomous)
 Erode - 638 052.


HEAD OF THE DEPT,
 DEPT OF ELECTRICAL & ELECTRONICS ENGG,
NANDHA ENGG COLLEGE,
ERODE - 638 052.



NANDHA ENGINEERING COLLEGE (Autonomous)

Affiliated to Anna University Chennai + Approved by AICTE + Accredited by NBA-New Delhi

Pitchchandampalayam, (P.O), Valkkalmodu, Erode - Perundurai Road, Erode - 638 052

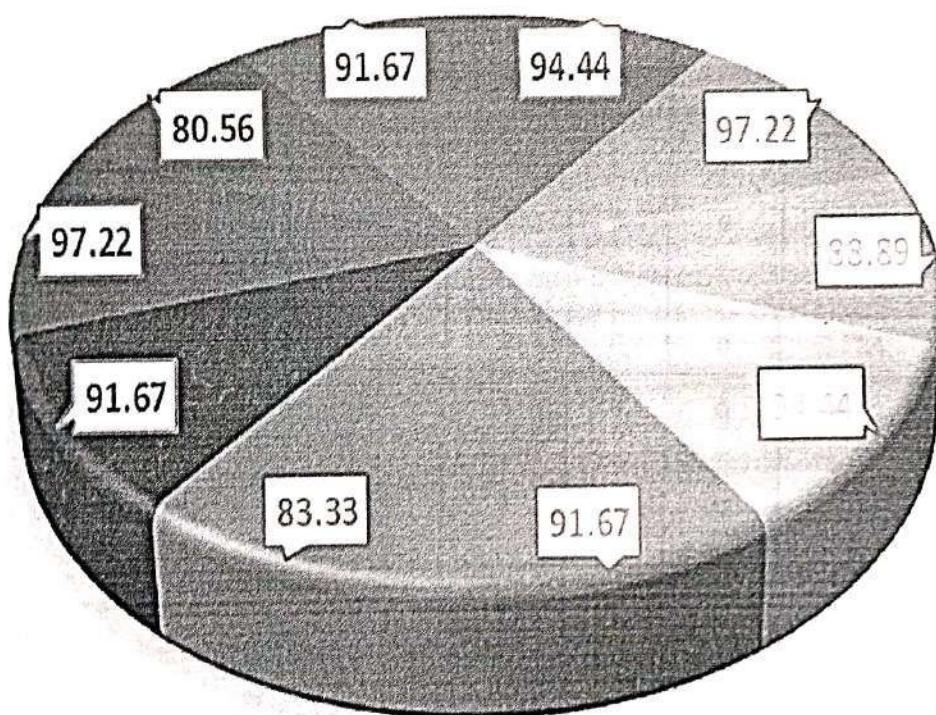
Phone : 04294-225585, 223711, 223722, 226393 Mobile : 73737 23722 Fax : 04294 - 224787

Website : www.nandhaengg.org

E.mail : Info@nandhaengg.org

EMPLOYER FEEDBACK ON CURRICULUM AND SYLLABUS (2022-2023)

EMPLOYER FEEDBACK



Q1

Q2

Q3

Q4

Q5

Q6

Q7

Q8

Q9

Q10

PRINCIPAL
Nandha Engineering College
(Autonomous)
Erode - 638 052.

HEAD OF THE DEPT,
DEPT OF ELECTRICAL & ELECTRONICS ENGG.
NANDHA ENGG COLLEGE,
ERODE - 638 052.



NANDHA ENGINEERING COLLEGE

(Autonomous)

Affiliated to Anna University Chennai + Approved by AICTE + Accredited by NBA-New Delhi

Pitchandampalayam, (P.O), Valkkalmedu, Erode - Perundurai Road, Erode - 638 052

Phone : 04294-225585, 223711, 223722, 226393 Mobile : 73737 23722 Fax : 04294 - 224787

Website : www.nandhaengg.org

E.mail : Info@nandhaengg.org

Employer Feedback on Curriculum and Syllabus

Analysis and Action Taken Report

Employer input is gathered from several recruitment industries using a systematic questionnaire. Their opinions are sought in the following areas: Employer evaluation on students' technical capabilities, willingness to offer to participate in industry activities, availability of essential communication skills to satisfy employment needs, ability to acquire industrial procedures quickly and mould themselves into the stream. It was discovered from their response that,

- Employers expressed satisfaction with the calibre of these graduates in 94.44 percent of cases.
- Employers agreed that the institution delivers high-quality graduates 91.67 percent of the time.
- Employers agreed Successful past experience of recruiting from this institution 97.72 percent of the time.

Suggestions from the Employer's:

- internships with corporate can be encouraged to acquire fair knowledge on company processes and policies.
- Develop curriculum and syllabus to enhance practical skills of the students to bridge the gap between curriculum and industries.
- students to undergo In-plant trainings in a greater number of cores in have a better in their field

Action Taken:

- The practical based approach is implemented through special workshop and guest Lecture.
- Lectures beyond the syllabus to cover recent trends in the industry have been executed.
- Decided to conduct extra experiments for the courses during laboratory hours and plan more industry visits.
- Training programmes for Personality Development were arranged to improve the communication skills of the students.

Principal

PRINCIPAL
Nandha Engineering College
(Autonomous)
Erode - 638 052.

Handwritten signature

HEAD OF THE DEPT,
DEPT OF ELECTRICAL & ELECTRONICS ENGG
NANDHA ENGG COLLEGE,
ERODE - 638 052.