



NANDHA ENGINEERING COLLEGE (Autonomous)

Affiliated to Anna University Chennai + Approved by AICTE + Accredited by NBA-NewDelhi

Pitchandampalayam, (P.O), Vaikkalmedu, Erode - Perundural Road, Erode - 638 052

Phone : 04294-225585, 223711, 223722, 226393 Mobile : 73737 23722 Fax : 04294 - 224787

Website : www.nandhaengg.org

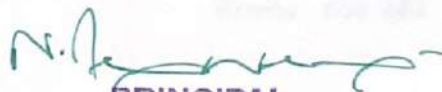
E.mail : info@nandhaengg.org

FACULTY FEEDBACK ON CURRICULAM AND SYLLABUS


SURVEY COUNT = 8

S.No	Feedback Questions	Excellent	Good	Fair	Poor	Total Weightage	Percentage	3 - Scale Weightage
1	Curriculum and syllabus on par with recent trends	3	5	0	0	27	84.37	2.53
2	Elucidation of course outcomes	3	4	1	0	25	78.12	2.34
3	Adequacy of Academic tasks in the course plan	4	4	0	0	28	87.5	2.62
4	Syllabus in accordance with competitive examinations	3	5	0	0	27	84.37	2.53
5	Importance and relevance of the course to industry and societal needs	6	2	0	0	30	93.75	2.81
6	Accessibility of relevant reading Materials and E-resources in the library	3	2	3	0	24	75.00	2.25
7	Course equilibrium between theory and application	2	4	2	0	24	75.00	2.25
8	Privilege to propose, modify, suggest and incorporate new topics in the syllabus through proper forum	4	3	1	0	27	87.5	2.62
9	Flexibility in adopting new techniques/ tools strategies in reaching	8	0	0	0	32	100	3
10	Scope provided for research activities	4	2	2	0	26	81.25	2.43





PRINCIPAL
Nandha Engineering College
(Autonomous)
Erode - 638 052.


HEAD OF THE DEPARTMENT
DEPARTMENT OF MANAGEMENT STUDIES
NANDHA ENGINEERING COLLEGE,
ERODE - 638 052



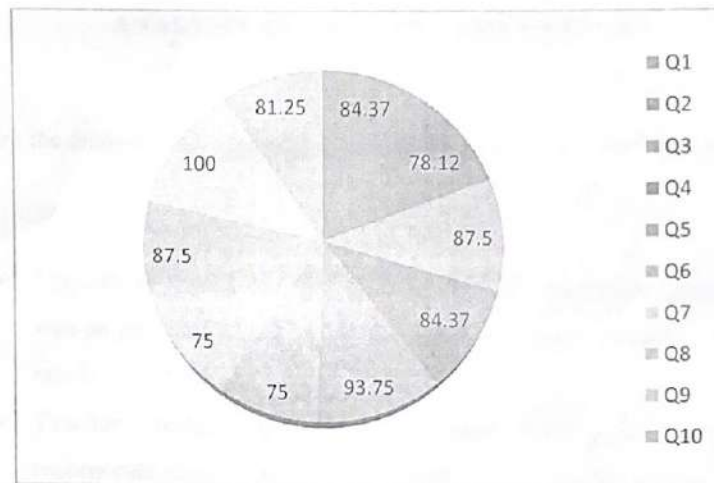
NANDHA ENGINEERING COLLEGE (Autonomous)

Affiliated to Anna University Chennai + Approved by AICTE + Accredited by NBA-NewDelhi
Pitchchandampalayam, (P.O), Vaikkalmedu, Erode - Perundurai Road, Erode - 638 052
Phone : 04294-225585, 223711, 223722, 226393 Mobile : 73737 23722 Fax : 04294 - 224787

Website : www.nandhaengg.org

E.mail : info@nandhaengg.org

FACULTY FEEDBACK ON CURRICULAM AND SYLLABUS



PRINCIPAL
Nandha Engineering College
(Autonomous)
Erode - 638 052.

HEAD OF THE DEPARTMENT
DEPARTMENT OF MANAGEMENT STUDIES
NANDHA ENGINEERING COLLEGE,
ERODE - 638 052



NANDHA ENGINEERING COLLEGE (Autonomous)

Affiliated to Anna University Chennai * Approved by AICTE * Accredited by NBA-NewDelhi

Pitchandampalayam, (P.O), Vaikkalmedu, Erode - Perundurai Road, Erode - 638 052

Phone : 04294-225585, 223711, 223722, 226393 Mobile : 73737 23722 Fax : 04294 - 224787

Website : www.nandhaengg.org

E.mail : info@nandhaengg.org

FACULTY FEEDBACK REPORT ON CURRICULUM AND SYLLABUS ANALYSIS AND ACTION TAKEN REPORT

Following are the analysis and suggestions which are given by the Faculty members:

Analysis:

- Majority of faculty members strongly agreed that the Curriculum and Syllabus was on par with recent trends and it has relevance to the Industry and Societal needs.
- Teachers strongly agreed that they have privilege to modify, suggest and incorporate new techniques or strategies in teaching for the development of students' employability skills and knowledge.
- Most of the faculty approved that course outcomes are well defined and clear and given more importance to research activities.
- The faculty suggested that there would be given importance to provide resource for competitive examination preparation for the students.
- Learning resource materials available in the library is adequate and accessible.
- Faculty has enough freedom through the Board of Studies that has privilege to propose, modify, suggest and include new topics in the syllabus.
- Appreciated that flexibility given to them to adopt new techniques, tools and strategies in teaching to improve teaching learning process.

Suggestions:

- Faculties discussed to combine the Functional and Sectoral electives and decided to offer 6 elective courses based on the feedback.




PRINCIPAL
Nandha Engineering College
(Autonomous)
Erode - 638 052.


HEAD OF THE DEPARTMENT
DEPARTMENT OF MANAGEMENT STUDIES
NANDHA ENGINEERING COLLEGE,
ERODE - 638 052



NANDHA ENGINEERING COLLEGE

(Autonomous)

Affiliated to Anna University Chennai + Approved by AICTE + Accredited by NBA-NewDelhi

Pitchandampalayam, (P.O), Vaikkalmedu, Erode - Perundurai Road, Erode - 638 052

Phone : 04294-225585, 223711, 223722, 226393 Mobile : 73737 23722 Fax : 04294 - 224787

Website : www.nandhaengg.org

E.mail : info@nandhaengg.org

- Faculties suggested to increase the credits for semester IV and suggested to include the core and Employment Enhancement course papers.
- Faculties suggested making provision in the next regulation for considering the full credits earned by the students while giving course exemption in lieu of online courses.
- Faculties suggested to include the Analytics courses in all electives and to include the Business Analytics electives in the new regulation.

Action taken:

- Faculty is educated to impart practical oriented teaching process by conducting quiz and seminars to the students.
- 6 Elective courses Finance, Marketing, Human resource, Operations, Business Analytics Entrepreneurship Development in the new curriculum.
- We accept all the appreciations expressed by Faculty members about the flexibility on framing Curriculum and Syllabus and good practices will be continued in future also.



PRINCIPAL
Nandha Engineering College
(Autonomous)
Erode - 638 052.

HEAD OF THE DEPARTMENT
DEPARTMENT OF MANAGEMENT STUDIES
NANDHA ENGINEERING COLLEGE,
ERODE - 638 052



NANDHA ENGINEERING COLLEGE (Autonomous)

Affiliated to Anna University Chennai + Approved by AICTE + Accredited by NBA-NewDelhi
Pitchandampalayam, (P.O), Vaikkalmedu, Erode - Perundurai Road, Erode - 638 052
Phone : 04294-225585, 223711, 223722, 226393 Mobile : 73737 23722 Fax : 04294 - 224787

Website : www.nandhaengg.org

E.mail : info@nandhaengg.org

EMPLOYER FEEDBACK ON CURRICULAM AND SYLLABUS

		SURVEY COUNT:5						
S.No	Feedback Questions	Excellent	Good	Fair	Poor	Total Weightage	Percentage	3 - Scale Weightage
1.	Satisfaction with the calibre of the graduates	3	2	0	0	18	90	2.70
2.	Satisfaction that graduates are learning the right skills/courses relevant to your organisation's requirements	4	0	1	0	18	90	2.70
3.	Satisfaction with the speed at which course content is being adapted to meet the changing industrial needs	3	2	0	0	18	90	2.70
4.	Institutional Reputation	2	2	1	0	16	80	2.40
5.	Relevant subject or Discipline Knowledge	3	1	1	0	16	80	2.40
6.	Quality of Employability Skills and Attributes of our graduates	2	3	0	0	14	70	2.10
7.	The institution produces high quality graduates	4	0	1	0	18	90	2.70
8.	Successful past experience of recruiting from this institution	3	1	1	0	17	85	2.55
9.	Organisation and institution collaborate on joint research projects	4	1	0	0	19	95	2.85
10.	Ability to apply professional and / or technical knowledge in the workplace	3	2	0	0	18	90	2.70



[Signature]
PRINCIPAL
Nandha Engineering College
(Autonomous)
Erode - 638 052.

[Signature]
HEAD OF THE DEPARTMENT
DEPARTMENT OF MANAGEMENT STUDIES
NANDHA ENGINEERING COLLEGE,
ERODE - 638 052



NANDHA ENGINEERING COLLEGE (Autonomous)

Affiliated to Anna University Chennai ✦ Approved by AICTE ✦ Accredited by NBA-NewDelhi

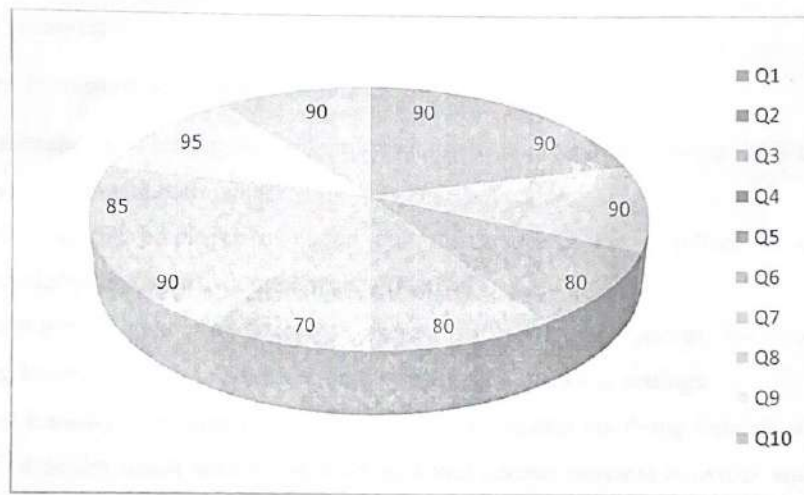
Pitchandampalayam, (P.O), Vaikkalmedu, Erode - Perundurai Road, Erode - 638 052

Phone : 04294-225585, 223711, 223722, 226393 Mobile : 73737 23722 Fax : 04294 - 224787

Website : www.nandhaengg.org

E.mail : info@nandhaengg.org

EMPLOYER FEEDBACK REPORT ON CURRICULUM AND SYLLABUS



PRINCIPAL
Nandha Engineering College
(Autonomous)
Erode - 638 052.

HEAD OF THE DEPARTMENT
DEPARTMENT OF MANAGEMENT STUDIES
NANDHA ENGINEERING COLLEGE,
ERODE - 638 052



NANDHA ENGINEERING COLLEGE (Autonomous)

Affiliated to Anna University Chennai + Approved by AICTE + Accredited by NBA-NewDelhi
Pitchchandampalayam, (P.O), Vaikkalmedu, Erode - Perundurai Road, Erode - 638 052
Phone : 04294-225585, 223711, 223722, 226393 Mobile : 73737 23722 Fax : 04294 - 224787
Website : www.nandhaengg.org E.mail : Info@nandhaengg.org

EMPLOYER FEEDBACK REPORT ON CURRICULUM AND SYLLABUS ANALYSIS AND ACTION TAKEN REPORT

Points on Analysis

Most of the Employers have expressed that

- The majority of employers concurred that graduates acquired business skills in accordance with their needs.
- Some of the employer remarked that the graduates are excellent in discipline knowledge and able to communicate effectively.
- Employers stated that students possess sufficient professional knowledge and employability skills to function more effectively in business settings.
- The majority of businesses stated that research projects involving industry-institution collaboration assist students in learning about current business activities and helping them discover their own place in an organization.

Suggestions:

- The students were provided with placement and training programs, seminars, and guest lecturers to enhance their technical and employability abilities.
- The feedback highlights the significance of rephrasing the course material to accommodate industry needs and establishing a syllabus that highlights those needs.
- To inspire students to become entrepreneurs and to launch a firm, prominent entrepreneurs from Erode and the surrounding areas were asked to speak at seminars and camps on entrepreneurship awareness.

Action Taken:

- Introduced value added courses like Artificial intelligence for managers course and Introduction to google apps, Business analytics in the new curriculum.




PRINCIPAL
Nandha Engineering College
(Autonomous)
Erode - 638 052.


HEAD OF THE DEPARTMENT
DEPARTMENT OF MANAGEMENT STUDIES
NANDHA ENGINEERING COLLEGE
ERODE - 638 052



NANDHA ENGINEERING COLLEGE

(Autonomous)

Affiliated to Anna University Chennai + Approved by AICTE + Accredited by NBA-NewDelhi
Pitchchandampalayam, (P.O), Vaikkalmedu, Erode - Perundurai Road, Erode - 638 052
Phone : 04294-225585, 223711, 223722, 226393 Mobile : 73737 23722 Fax : 04294 - 224787

Website : www.nandhaengg.org

E.mail : info@nandhaengg.org

ALUMNI FEEDBACK ON CURRICULAM AND SYLLABUS

SURVEY COUNT:8								
S.No	Feedback Questions	Excellent	Good	Fair	Poor	Total Weightage	Percentage	3 - Scale Weightage
1.	Academic initiatives taken by the college to improve technical or industry required knowledge is sufficient	4	3	1	0	27	84.37	2.53
2.	Co-curricular initiatives taken by the college to improve the students technical/professional skills	4	4	0	0	28	87.50	2.62
3.	Whether the Choice Based Credit System was in tune with the existing or emerging trends of the industry	2	5	1	0	25	78.12	2.34
4.	Whether the Programme offered to you was suitably demanding the industrial need	2	5	1	0	25	78.12	2.34
5.	Was the Syllabus prescribed for the programme are well organized and structured?	3	4	1	0	26	81.25	2.43
6.	Content of the courses (subjects) offered under my programme was up to date and relevant	3	4	1	0	26	81.25	2.43
7.	Project work / Internships offered under my programme was challenging and constructive	4	3	1	0	27	84.37	2.53
8.	Open Elective courses offered were diverse and resourceful	3	3	2	0	25	78.12	2.34
9.	Overall learning environment offered in the campus	5	3	0	0	29	90.62	2.71




PRINCIPAL
Nandha Engineering College
(Autonomous)
Erode - 638 052.


HEAD OF THE DEPARTMENT
DEPARTMENT OF MANAGEMENT STUDIES
NANDHA ENGINEERING COLLEGE,
ERODE - 638 052



NANDHA ENGINEERING COLLEGE (Autonomous)

Affiliated to Anna University Chennai * Approved by AICTE * Accredited by NBA-NewDelhi

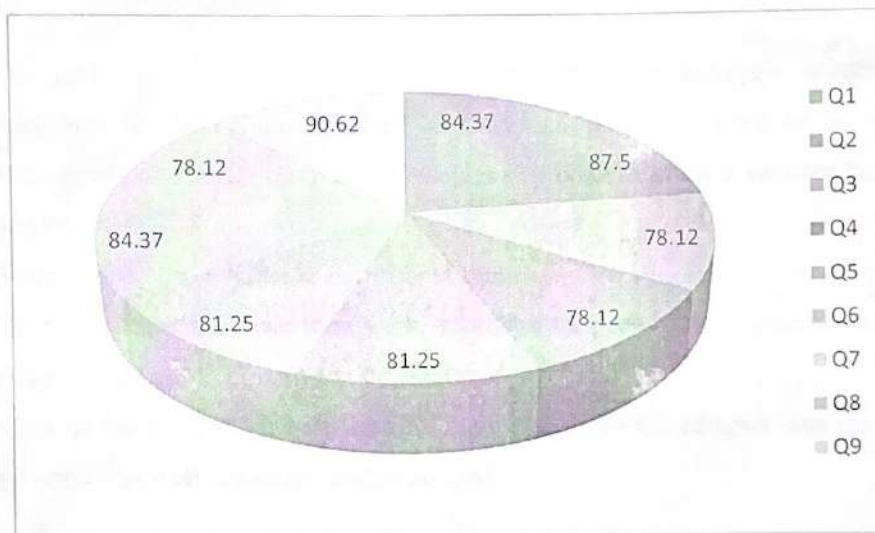
Pitchandampalayam. (P.O), Vaikkalmedu, Erode - Perundurai Road, Erode - 638 052

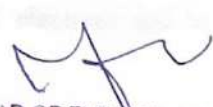
Phone : 04294-225585, 223711, 223722, 226393 Mobile : 73737 23722 Fax : 04294 - 224787

Website : www.nandhaengg.org

E.mail : info@nandhaengg.org

ALUMNI FEEDBACK REPORT ON CURRICULUM AND SYLLABUS




HEAD OF THE DEPARTMENT
DEPARTMENT OF MANAGEMENT STUDIES
NANDHA ENGINEERING COLLEGE,
ERODE - 638 052




PRINCIPAL
Nandha Engineering College
(Autonomous)
Erode - 638 052.



NANDHA ENGINEERING COLLEGE

(Autonomous)

Affiliated to Anna University Chennai + Approved by AICTE + Accredited by NBA-NewDelhi

Pitchchandampalayam, (P.O), Vaikkalmedu, Erode - Perundurai Road, Erode - 638 052

Phone : 04294-225585, 223711, 223722, 226393 Mobile : 73737 23722 Fax : 04294 - 224787

Website : www.nandhaengg.org

E.mail : info@nandhaengg.org

ALUMNI FEEDBACK REPORT ON CURRICULUM AND SYLLABUS

ANALYSIS AND ACTION TAKEN REPORT

Following are the analysis and suggestions which are given by the Alumnae of MBA department:

Analysis:

- The majority of former students concurred that the college's academic activities contribute to the enhancement of technical knowledge needed in an industry. It is accomplished through carrying out technical project work and summer training courses and internships.
- According to the feedback, the offered open elective courses were beneficial and might include current business topics. By incorporating new developments in a sector, the choice-based credit system can be enhanced.
- Most of the alumni felt that learning environment in the campus was excellent and the syllabus was well organized and structured.

Suggestions:

- Alumni suggested including "Entrepreneurship Development", course as a core paper to enhance their business skills.
- Stock trading laboratory, Indian ethos courses has been recommended by the alumni to get practical exposure.
- Alumni suggested to include the Analytics courses in all electives and to include the Business Analytics electives.

Action taken:

Entrepreneurship Development, Stock trading, Indian ethos and Business Analytics courses introduced in new curriculum.




PRINCIPAL
Nandha Engineering College
(Autonomous)
Erode - 638 052.


HEAD OF THE DEPARTMENT
DEPARTMENT OF MANAGEMENT STUDIES
NANDHA ENGINEERING COLLEGE
ERODE - 638 052



NANDHA ENGINEERING COLLEGE (Autonomous)

Affiliated to Anna University Chennai + Approved by AICTE + Accredited by NBA-NewDelhi

Pitchchandampalayam, (P.O), Valkkalmedu, Erode - Perundural Road, Erode - 638 052

Phone : 04294-225585, 223711, 223722, 226393 Mobile : 73737 23722 Fax : 04294 - 224787

Website : www.nandhaengg.org

E.mail : info@nandhaengg.org


STUDENTS FEEDBACK ON CURRICULAM AND SYLLABUS

SURVEY COUNT:13

S.No	Feedback Questions	Excellent	Good	Fair	Poor	Total Weightage	Percentage	3 - Scale Weightage
1.	The curriculum and syllabus are well organized and easy to follow	5	8	0	0	44	84.61	2.53
2.	Is the entire syllabus covered by the faculty?	2	10	1	0	40	76.92	2.30
3.	Laboratory exercise improve my ability to understand concepts and helps to relate and apply theory to practice	2	8	3	0	38	73.07	2.19
4.	The depth of the syllabus is proportional to course outcomes	3	9	1	0	41	78.84	2.36
5.	The correct credit were allocated to the course depending on the difficulty of the course	2	11	0	0	41	78.84	2.36
6.	The syllabus provide the necessary skill set required by the industry	2	9	2	0	39	75	2.25
7.	The books prescribed as reference material are relevant, updated and appropriate	3	9	1	0	41	78.84	2.36
8.	The elective offered are pertinent to the specification streams and to technology advancements	3	8	2	0	40	76.92	2.30
9.	Is the syllabus career oriented?	3	7	2	1	38	73.07	2.19
10.	Is the pre-requisite course appropriate?	5	6	2	0	42	80.76	2.42
11.	Does the teacher provide examples of concepts/principles, description effectively?	3	10	0	0	42	80.76	2.42




PRINCIPAL
 Nandha Engineering College
 (Autonomous)
 Erode - 638 052.


HEAD OF THE DEPARTMENT
 DEPARTMENT OF MANAGEMENT STUDIES
 NANDHA ENGINEERING COLLEGE,
 ERODE - 638 052



NANDHA ENGINEERING COLLEGE (Autonomous)

Affiliated to Anna University Chennai + Approved by AICTE + Accredited by NBA-NewDelhi

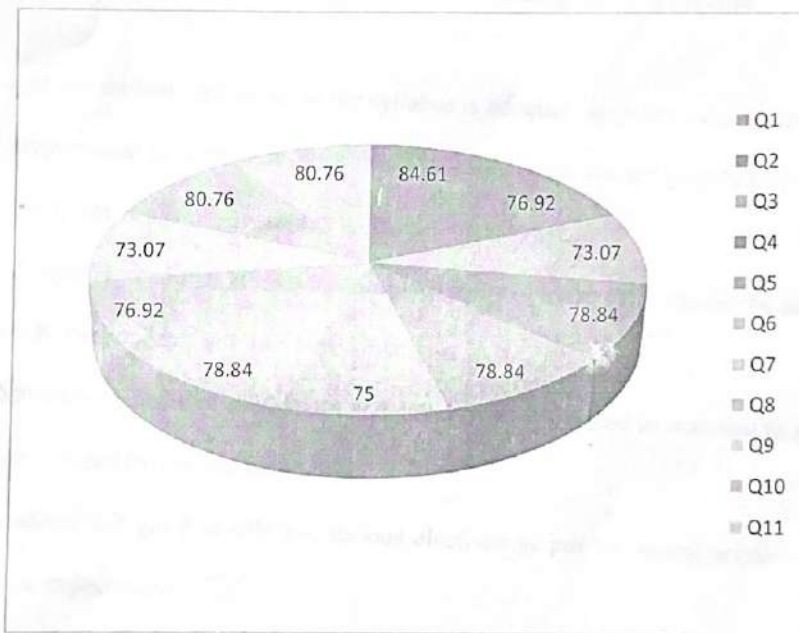
Pitchandampalayam, (P.O), Vaikkalmedu, Erode - Perundurai Road, Erode - 638 052

Phone : 04294-225585, 223711, 223722, 226393 Mobile : 73737 23722 Fax : 04294 - 224787


Website : www.nandhaengg.org

E.mail : info@nandhaengg.org

STUDENT FEEDBACK REPORT ON CURRICULUM AND SYLLABUS




PRINCIPAL
Nandha Engineering College
(Autonomous)
Erode - 638 052.


HEAD OF THE DEPARTMENT
DEPARTMENT OF MANAGEMENT STUDIES
NANDHA ENGINEERING COLLEGE,
ERODE - 638 052



NANDHA ENGINEERING COLLEGE (Autonomous)

Affiliated to Anna University Chennai + Approved by AICTE + Accredited by NBA-NewDelhi

Pitchandampalayam, (P.O), Valkkalmedu, Erode - Perundural Road, Erode - 638 052

Phone : 04294-225585, 223711, 223722, 226393 Mobile : 73737 23722 Fax : 04294 - 224787

Website : www.nandhaengg.org

E.mail : info@nandhaengg.org

STUDENT FEEDBACK REPORT ON CURRICULUM AND SYLLABUS ANALYSIS AND ACTION TAKEN REPORT

Feedback from the students is collected to improve the teaching learning process

Analysis

- Most of the students felt depth of the syllabus is adequate in developing competencies and proportional to the course outcomes. The course contents are inter-linked together and satisfy the needs of subsequent courses.
- The students agreed that laboratory exercises helps to understand the theory concepts and apply the concepts into real time situations.
- The Students opined that curriculum and syllabus are enhanced in matched to similar program offered by various Institutions.
- The students felt good in offering various electives as per the recent scenarios and corporate expectations.
- The students recommended that curriculum may have more practical courses to have more exposure on industry expectations and the suggestions have taken into consideration for students' career growth and development.



PRINCIPAL
Nandha Engineering College
(Autonomous)
Erode - 638 052.

HEAD OF THE DEPARTMENT
DEPARTMENT OF MANAGEMENT STUDIES
NANDHA ENGINEERING COLLEGE,
ERODE - 638 052



NANDHA ENGINEERING COLLEGE (Autonomous)

Affiliated to Anna University Chennai + Approved by AICTE + Accredited by NBA-NewDelhi
Pitchchandampalayam, (P.O), Vaikkalmedu, Erode - Perundurai Road, Erode - 638 052
Phone : 04294-225585, 223711, 223722, 226393 Mobile : 73737 23722 Fax : 04294 - 224787

Website : www.nandhaengg.org

E.mail : info@nandhaengg.org

Suggestions

- Students suggested including more practical courses like Managerial skill Development, Seminar, Transactional analysis, etc.
- Students suggested placement training needed from I-year onwards.

Action taken

- Placement and training programmes, seminars and guest lecturers were arranged for the students to enrich the technical skills and employability skills.


HEAD OF THE DEPARTMENT
DEPARTMENT OF MANAGEMENT STUDIES
NANDHA ENGINEERING COLLEGE,
ERODE - 638 052




PRINCIPAL
Nandha Engineering College
(Autonomous)
Erode - 638 052.