



NANDHA ENGINEERING COLLEGE (Autonomous)

Affiliated to Anna University Chennai + Approved by AICTE + Accredited by NBA-New Delhi

Pitchandampalayam, (P.O), Valkkalmadu, Erode - Perundurai Road, Erode - 638 052

Phone : 04294-225585, 223711, 223722, 226393 Mobile : 73737 23722 Fax : 04294 - 224787

Website : www.nandhaengg.org

E.mail : info@nandhaengg.org

STUDENTS FEEDBACK ON CURRICULAM AND SYLLABUS

SURVEY COUNT:57

S.No	Feedback Questions	Excellent	Good	Fair	Poor	Total Weightage	Percentage	3 - Scale Weightage
1.	The curriculum and syllabus are well organized and easy to follow	22	30	5	0	188	82.45	2.47
2.	Is the entire syllabus covered by the faculty?	18	34	5	0	184	80.70	2.42
3.	Laboratory exercise improve my ability to understand concepts and helps to relate and apply theory to practice	20	34	3	0	188	82.45	2.47
4.	The depth of the syllabus is proportional to course outcomes	18	33	6	0	183	80.26	2.40
5.	The correct credit were allocated to the course depending on the difficulty of the course	21	31	5	0	187	82.01	2.46
6.	The syllabus provide the necessary skill set required by the industry	19	33	5	0	185	81.14	2.43
7.	The books prescribed as reference material are relevant, updated and appropriate	17	35	5	0	183	80.26	2.40
8.	The elective offered are pertinent to the specification streams and to technology advancements	17	34	6	0	182	79.82	2.39
9.	Is the syllabus career oriented?	19	33	5	0	185	81.14	2.43
10.	Is the pre-requisite course appropriate?	19	33	5	0	185	81.14	2.43
11.	Does the teacher provide examples of concepts/principles and description effectively?	23	31	3	0	191	83.77	2.51



PRINCIPAL
Nandha Engineering College
(Autonomous)
Erode - 638 052.



NANDHA ENGINEERING COLLEGE (Autonomous)

Affiliated to Anna University Chennai + Approved by AICTE + Accredited by NBA-NewDelhi

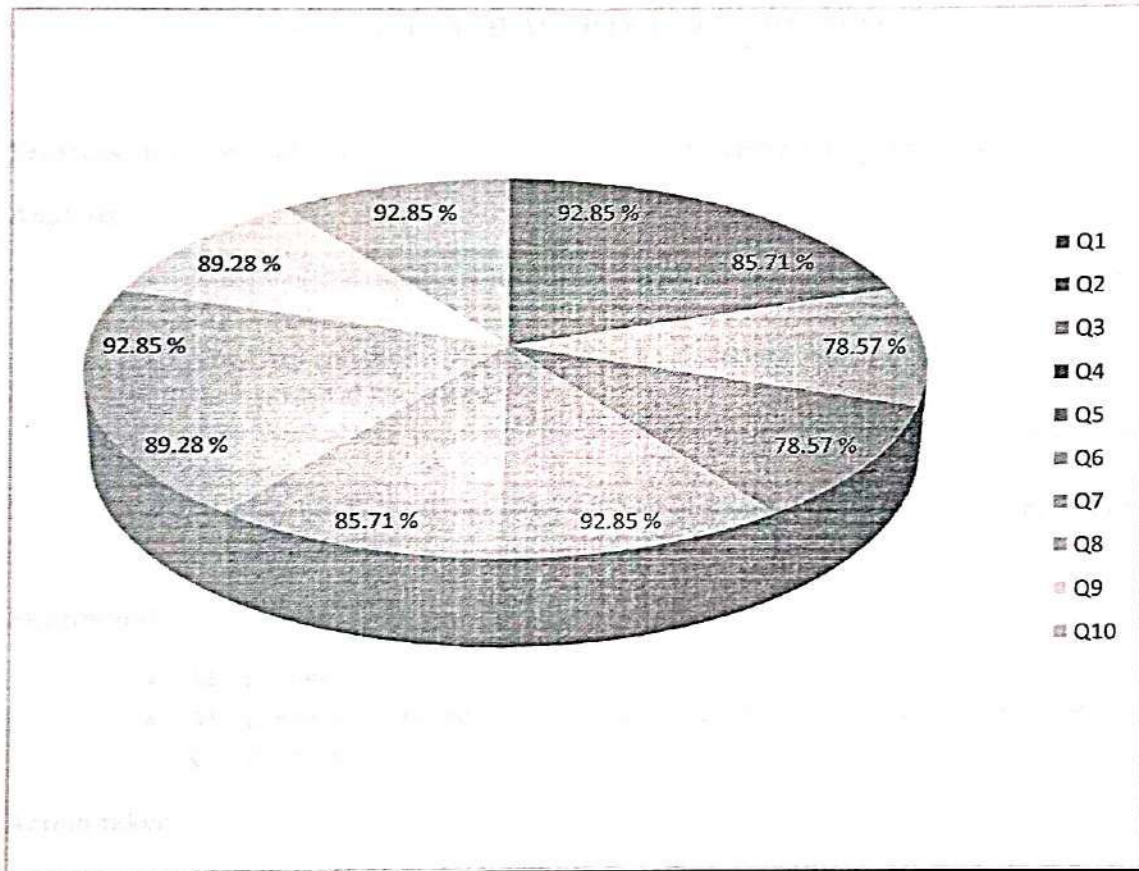
Pitchandampalayam, (P.O), Vaikkalmedu, Erode - Perundurai Road, Erode - 638 052

Phone : 04294-225585, 223711, 223722, 226393 Mobile : 73737 23722 Fax : 04294 - 224787

Website : www.nandhaengg.org

E.mail : info@nandhaengg.org

STUDENT FEEDBACK REPORT ON CURRICULUM AND SYLLABUS



PRINCIPAL
Nandha Engineering College
(Autonomous)
Erode - 638 052.



NANDHA ENGINEERING COLLEGE

(Autonomous)

Affiliated to Anna University Chennai + Approved by AICTE + Accredited by NBA-NewDelhi

Pitchandampalayam, (P.O), Valkkalmedu, Erode - Perundurai Road, Erode - 638 052

Phone : 04294-225585, 223711, 223722, 226393 Mobile : 73737 23722 Fax : 04294 - 224787

Website : www.nandhaengg.org

E.mail : info@nandhaengg.org

STUDENT FEEDBACK REPORT ON CURRICULUM AND SYLLABUS

ANALYSIS AND ACTION TAKEN REPORT

Feedback from the students is collected to improve the teaching learning process

Analysis

- Most of the students expressed that curriculum and syllabus was well organized.
- They are satisfied with the laboratory exercises which help them to improve their practical knowledge
- Text books and reference books available in the library are adequate and relevant
- Elective courses offered were relevant and useful to them to meet the industry requirements

Suggestions

- More number of add on and one credit courses to be offered
- More exposure to be given to improve their Technical, Employable and Communication skill sets

Action taken

- More number of Value-Added Courses are to be conducted to improve their confidence level
- More number of seminars, workshops and conferences to be planned



PRINCIPAL
Nandha Engineering College
(Autonomous)
Erode - 638 052.



NANDHA ENGINEERING COLLEGE

(Autonomous)

Affiliated to Anna University Chennai + Approved by AICTE + Accredited by NBA-NewDelhi

Pitchandampalayam, (P.O), Valkkalmedu, Erode - Perundurai Road, Erode - 638 052

Phone : 04294-225585, 223711, 223722, 226393 Mobile : 73737 23722 Fax : 04294 - 224787

Website : www.nandhaengg.org

E.mail : Info@nandhaengg.org

ALUMINI FEEDBACK ON CURRICULAM AND SYLLABUS

SURVEY COUNT:42								
S.No	Feedback Questions	Excellent	Good	Fair	Poor	Total Weightage	Percentage	3 - Scale Weightage
1.	Academic initiatives taken by the college to improve technical or industry required knowledge is sufficient	14	25	2	1	136	80.95	2.42
2.	Co-curricular initiatives taken by the college to improve the students technical/professional skills	15	20	5	2	132	78.57	2.35
3.	Whether the Choice Based Credit System was in tune with the existing or emerging trends of the industry	14	24	3	1	135	80.35	2.41
4.	Whether the Programme offered to you was suitably demanding the industrial need	17	23	1	1	140	83.33	2.5
5.	Was the Syllabus prescribed for the programme are well organized and structured?	19	20	2	1	141	83.92	2.51
6.	Content of the courses (subjects) offered under my programme was up to date and relevant	17	21	3	1	138	82.14	2.46
7.	Project work / Internships offered under my programme was challenging and constructive	15	23	3	1	136	80.95	2.42
8.	Open Elective courses offered were diverse and resourceful	17	22	2	1	139	82.73	2.48
9.	Overall learning environment offered in the campus	23	17	2	0	147	87.5	2.62



PRINCIPAL
Nandha Engineering College
(Autonomous)
Erode - 638 052.



NANDHA ENGINEERING COLLEGE (Autonomous)

Affiliated to Anna University Chennai + Approved by AICTE + Accredited by NBA-New Delhi

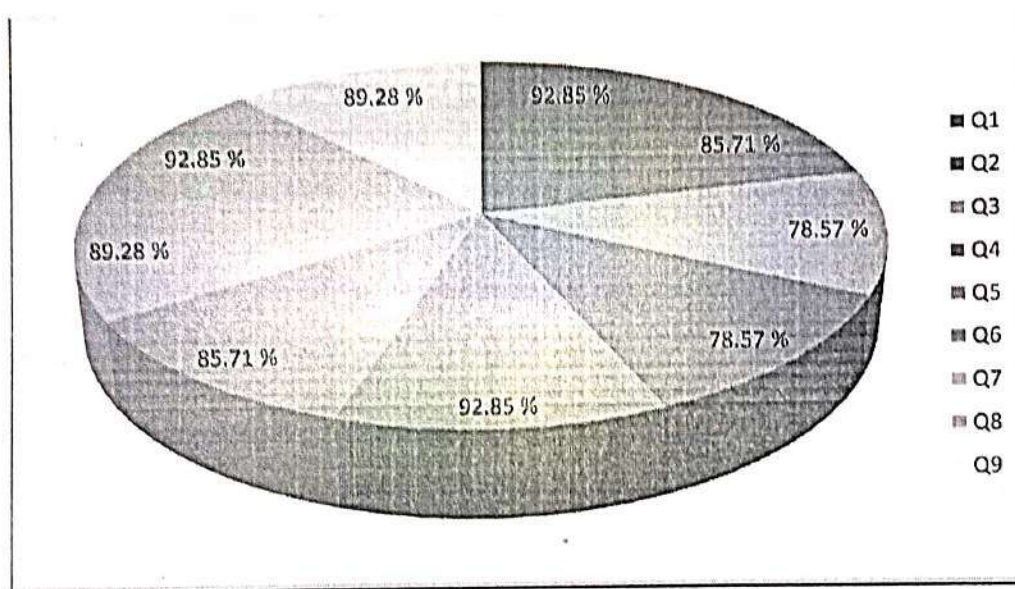
Pitchandampalayam, (P.O), Valkkalmodu, Erode - Perundurai Road, Erode - 638 052

Phone : 04294-225585, 223711, 223722, 226393 Mobile : 73737 23722 Fax : 04294 - 224787

Website : www.nandhaengg.org

E.mail : Info@nandhaengg.org

ALUMNI FEEDBACK REPORT ON CURRICULUM AND SYLLABUS



[Handwritten signature]



[Handwritten signature]
PRINCIPAL
Nandha Engineering College
(Autonomous)
Erode - 638 052.



NANDHA ENGINEERING COLLEGE (Autonomous)

Affiliated to Anna University Chennai + Approved by AICTE + Accredited by NBA-New Delhi

Pitchandampalayam, (P.O), Valkkalmedu, Erode - Perundurai Road, Erode - 638 052

Phone : 04294-225585, 223711, 223722, 226393 Mobile : 73737 23722 Fax : 04294 - 224787

Website : www.nandhaengg.org

E.mail : info@nandhaengg.org

ALUMNI FEEDBACK REPORT ON CURRICULUM AND SYLLABUS

ANALYSIS AND ACTION TAKEN REPORT

Following are the Analysis and Suggestions which are given by the Alumni to our department:

Analysis:

- Many students were appreciative of the Syllabus prescribed for the programme and feel it was well organized and structured.
- The number of subjects can be increased that is suitable to meet the demand of industrial needs.
- Open Elective courses offered were diverse and resourceful.

Suggestion:

- More training on Industry related subjects can be provided.
- Our Alumni students suggested including React JS, testing related courses, UI/UX, NoSQL in our curriculum.

Action taken:

- More Industry Institute Interactive activities to be arranged.
- The courses suggested by our alumni are included in our R22 curriculum: Web Technology (22CAB11), Software Quality Assurance (22CAX19), User interface design (22CAX10), Database management system (22CAB06).
- We accept all the Suggestions/Comments/Appreciations expressed by Alumni and good practices will be continued in future also.



PRINCIPAL
Nandha Engineering College
(Autonomous)
Erode - 638 052.



NANDHA ENGINEERING COLLEGE (Autonomous)

Affiliated to Anna University Chennai + Approved by AICTE + Accredited by NBA-New Delhi

Pitchandampalayam, (P.O), Valkkalmedu, Erode - Perundurai Road, Erode - 638 052
Phone : 04294-225585, 223711, 223722, 226393 Mobile : 73737 23722 Fax : 04294 - 224787

Website : www.nandhaengg.org

E.mail : Info@nandhaengg.org

EMPLOYER FEEDBACK ON CURRICULAM AND SYLLABUS

								SURVEY COUNT:14	
S.No	Feedback Questions	Excellent	Good	Fair	Poor	Total Weightage	Percentage	3 - Scale Weightage	
1.	Satisfaction with the calibre of the graduates	7	7	0	0	49	87.5	2.62	
2.	Satisfaction that graduates are learning the right skills/courses relevant to your organisation's requirements	5	8	0	1	45	80.35	2.41	
3.	Satisfaction with the speed at which course content is being adapted to meet the changing industrial needs	7	6	0	1	47	83.92	2.51	
4.	Institutional Reputation	4	9	1	0	45	80.35	2.41	
5.	Relevant subject or Discipline Knowledge	7	7	0	0	49	87.5	2.62	
6.	Quality of Employability Skills and Attributes of our graduates	6	7	0	1	46	82.14	2.46	
7.	The institution produces high quality graduates	3	10	1	0	44	78.57	2.35	
8.	Successful past experience of recruiting from this institution	3	9	1	1	42	75	2.25	
9.	Organisation and institution collaborate on joint research projects	4	8	1	1	43	76.78	2.30	
10.	Ability to apply professional and / or technical knowledge in the workplace	6	7	0	1	46	82.14	2.46	



PRINCIPAL
Nandha Engineering College
(Autonomous)
Erode - 638 052.



NANDHA ENGINEERING COLLEGE (Autonomous)

Affiliated to Anna University Chennai + Approved by AICTE + Accredited by NBA NewDelhi

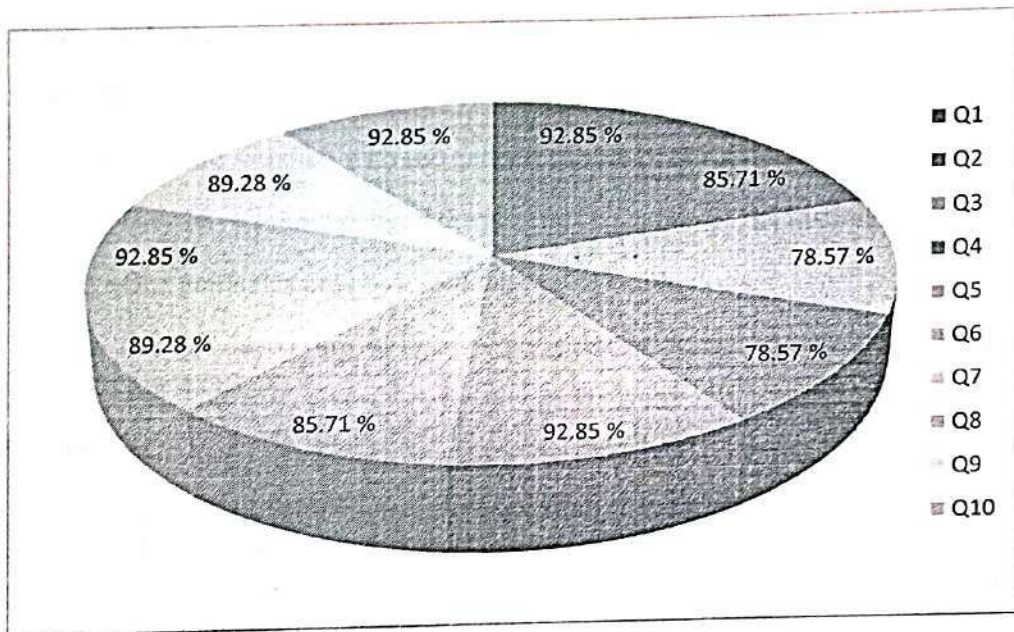
Pitchandampalayam, (P.O), Vaikkalmedu, Erode - Perundural Road, Erode - 638 052

Phone : 04294-225585, 223711, 223722, 226393 Mobile : 73737 23722 Fax : 04294 - 224787

E.mail : Info@nandhaengg.org

Website : www.nandhaengg.org

EMPLOYER FEEDBACK REPORT ON CURRICULUM AND SYLLABUS



PRINCIPAL
Nandha Engineering College
(Autonomous)
Erode - 638 052.



NANDHA ENGINEERING COLLEGE (Autonomous)

Affiliated to Anna University Chennai + Approved by AICTE + Accredited by NBA-New Delhi

Pitchandampalayam, (P.O), Valkkalmedu, Erode - Perundural Road, Erode - 638 052

Phone : 04294-225585, 223711, 223722, 226393 Mobile : 73737 23722 Fax : 04294 - 224787

Website : www.nandhaengg.org

E.mail : Info@nandhaengg.org

EMPLOYER FEEDBACK REPORT ON CURRICULUM AND SYLLABUS ANALYSIS AND ACTION TAKEN REPORT

Points on Analysis

Most of the Employers have expressed that

- They are satisfied with the general calibre of our graduates
 - They have acknowledged the general reputation of the institution
 - Our graduates are possessed with employable skills
 - Our graduates are able to apply their technical knowledge in their work place
- Suggestions

Suggestions:

- Industry Institute interactive activities may be strengthened
- Industry based project work may be given to the students
- More training to be given to improve their Technical, Employable and Communication skill sets

Action Taken:

- Project Based learning module will be made mandatory
- Industry-based projects will be encouraged
- More number of Industry relevant Value-Added Courses to be conducted
- More Industry Institute Interactive activities to be arranged



PRINCIPAL
Nandha Engineering College
(Autonomous)
Erode - 638 052.



NANDHA ENGINEERING COLLEGE (Autonomous)

Affiliated to Anna University Chennai + Approved by AICTE + Accredited by NBA-New Delhi

Pitchandampalayam, (P.O), Vaikkalmedu, Erode - Perundurai Road, Erode - 638 052

Phone : 04294-225585, 223711, 223722, 226393 Mobile : 73737 23722 Fax : 04294 - 224787

Website : www.nandhaengg.org

E.mail : info@nandhaengg.org

FACULTY FEEDBACK ON CURRICULAM AND SYLLABUS

SURVEY COUNT = 7								
S.No	Feedback Questions	Excellent	Good	Fair	Poor	Total Weightage	Percentage	3 - Scale Weightage
1	Curriculum and syllabus on par with recent trends	6	0	1	0	26	92.85	2.78
2	Elucidation of course outcomes	3	4	0	0	24	85.71	2.57
3	Adequacy of Academic tasks in the course plan	1	6	0	0	22	78.57	2.35
4	Syllabus in accordance with competitive examinations	1	6	0	0	22	78.57	2.35
5	Importance and relevance of the course to industry and societal needs	5	2	0	0	26	92.85	2.78
6	Accessibility of relevant reading Materials and E-sources in the library	3	4	0	0	24	85.71	2.57
7	Course equilibrium between theory and application	4	3	0	0	25	89.28	2.67
8	Privilege to propose, modify, suggest and incorporate new topics in the syllabus through proper forum	5	2	0	0	26	92.85	2.78
9	Flexibility in adopting new techniques/ tools strategies in reaching	4	3	0	0	25	89.28	2.67
10	Scope provided for research activities	5	2	0	0	26	92.85	2.78



PRINCIPAL
Nandha Engineering College
(Autonomous)
Erode - 638 052.



NANDHA ENGINEERING COLLEGE

(Autonomous)

Affiliated to Anna University Chennai ♦ Approved by AICTE ♦ Accredited by NBA New Delhi

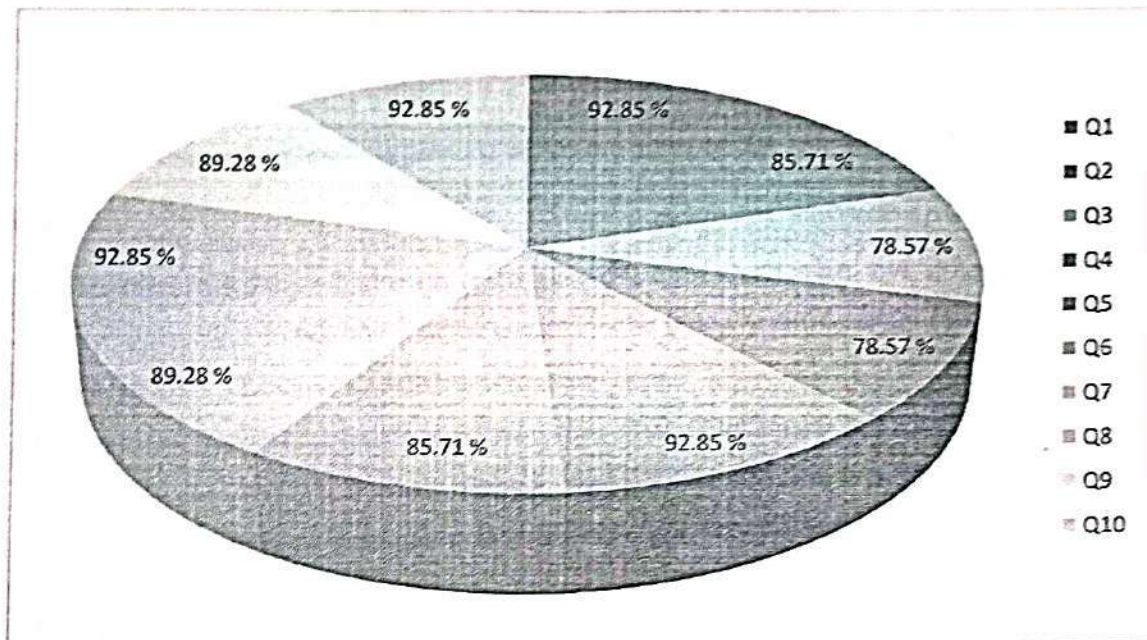
Pitchandampalayam, (P.O), Vaikkalmedu, Erode - Perundurai Road, Erode - 638 052

Phone : 04294-225585, 223711, 223722, 226393 Mobila : 73737 23722 Fax : 04294 - 224787

Website : www.nandhaengg.org

E.mail : info@nandhaengg.org

FACULTY FEEDBACK ON CURRICULAM AND SYLLABUS



PRINCIPAL
Nandha Engineering College
(Autonomous)
Erode - 638 052.



NANDHA ENGINEERING COLLEGE (Autonomous)

Affiliated to Anna University Chennai ♦ Approved by AICTE ♦ Accredited by NBA-NewDelhi

Pitchandampalayam, (P.O), Valkkalmadu, Erode - Perundurai Road, Erode - 638 052

Phone : 04294-225585, 223711, 223722, 226393 Mobile : 73737 23722 Fax : 04294 - 224787

Website : www.nandhaengg.org

E.mail : Info@nandhaengg.org

FACULTY FEEDBACK REPORT ON CURRICULUM AND SYLLABUS ANALYSIS AND ACTION TAKEN REPORT

Following are the analysis and suggestions which are given by the Faculty members:

Analysis:

- Majority of faculty members strongly agreed that the Curriculum and Syllabus was on par with recent trends and it has relevance to the Industry and Societal needs.
- Elucidation of Course Outcomes adequately done.
- Learning resource materials available in the library is adequate and accessible.
- Faculty has enough freedom through the Board of Studies that has privilege to propose, modify, suggest and include new topics in the syllabus.
- Appreciated that flexibility given to them to adopt new techniques, tools and strategies in teaching to improve teaching learning process.

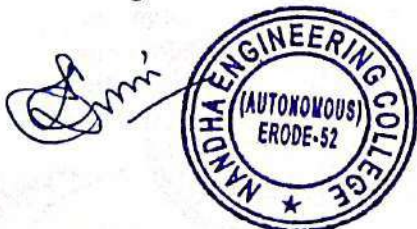
Suggestions:

Our faculty members suggested adding virtualization, robotics, intellectual property rights and information security subjects to the upcoming curriculum.

Action taken:

We include Data center virtualization (22CAX05), Robotic process Automation (22CAX03), Intellectual property rights (22CAX13) and Information security (22CAX20) subjects included in the R22 curriculum.

We accept all the appreciations expressed by Faculty members about the flexibility on framing Curriculum and Syllabus and good practices will be continued in future also.



PRINCIPAL
Nandha Engineering College
(Autonomous)
Erode - 638 052.