



NANDHA ENGINEERING COLLEGE

(AUTONOMOUS)

(Affiliated to Anna University, Approved by AICTE, Accredited by NAAC (A+ Grade)

ERODE – 638052 TAMILNADU

DEPARTMENT OF ARTIFICIAL INTELLIGENCE AND DATA SCIENCE

1.4 FEEDBACK SYSTEM

FACULTY FEEDBACK

S.No	Feedback Questions	Excellent	Good	Fair	Poor	Total Weightage	Percentage (%)
1	Curriculum and syllabus on par with recent trends	2	3	5	0	27	67.50%
2	Elucidation of course outcomes	5	1	4	0	31	77.50%
3	Adequacy of Academic tasks in the course plan	10	0	0	0	40	100%
4	Syllabus in accordance with competitive examinations	4	1	5	0	29	72.50%
5	Importance and relevance of the course to industry and societal needs	9	1	0	0	39	97.50%
6	Accessibility of relevant reading Materials and E-sources in the library	8	2	0	0	38	95%
7	Course equilibrium between theory and application	9	1	0	0	39	97.50%
8	Privilege to propose, modify, suggest and incorporate new topics in the syllabus through proper forum	8	1	1	0	37	92.50%
9	Flexibility in adopting new techniques/ tools strategies in reaching	6	4	0	0	36	90%
10	Scope provided for research activities	3	5	2	0	31	77.50%

M. PARVATHI M.E.,
Associate Professor & Head

Department of Artificial Intelligence and Data Science
Nandha Engineering College (Autonomous)
Erode - 638 052.

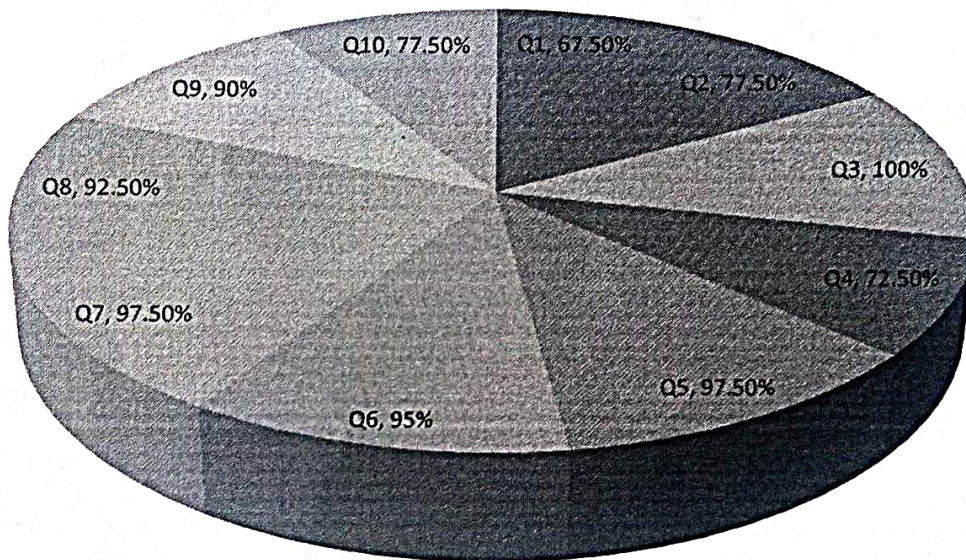


NANDHA ENGINEERING COLLEGE

(AUTONOMOUS)

(Affiliated to Anna University, Approved by AICTE, Accredited by NAAC (A+ Grade)
ERODE – 638052 TAMILNADU

FACULTY FEEDBACK ON CURRICULAM AND SYLLABUS



M. PARVATHI M.E.,
Associate Professor & Head

Department of Artificial Intelligence and Data Science
Nandha Engineering College (Autonomous)
Erode - 638 052.



NANDHA ENGINEERING COLLEGE

(AUTONOMOUS)

(Affiliated to Anna University, Approved by AICTE, Accredited by NAAC (A+ Grade)
ERODE - 638052 TAMILNADU

FACULTY FEEDBACK REPORT

ANALYSIS AND ACTION TAKEN REPORT

Following are the analysis and suggestions which are given by the Faculty members:

Analysis:

- Faculty members agreed that the Curriculum and Syllabus was on par with recent trends and it has relevance to the Industry needs.
- The course outcomes and academic tasks in the course plan were adequate.
- Vertical courses were included with relevant to industry needs.
- Faculty has enough freedom through the Board of Studies that has privilege to propose, modify, suggest and include new topics in the syllabus.

Suggestions:

- Entrepreneurship/Employability Courses may be including in curriculum.
- More courses relevant to societal needs to be include in the curriculum.

Action taken:

- Teaching Learning process is changed according to the industrial needs.
- Value added courses and one credit courses included.
- Learning resource materials are available in the library is adequate in addition to that the materials are uploaded in Google classroom.

M. PARVATHI M.E.,
Associate Professor & Head
Department of Artificial Intelligence and Data Science
Nandha Engineering College (Autonomous)
Erode - 638 052.



NANDHA ENGINEERING COLLEGE

(AUTONOMOUS)

(Affiliated to Anna University, Approved by AICTE, Accredited by NAAC (A+ Grade)

ERODE – 638052 TAMILNADU

DEPARTMENT OF ARTIFICIAL INTELLIGENCE AND DATA SCIENCE

1.4 FEEDBACK SYSTEM

STUDENTS FEEDBACK

S.No	Feedback Questions	Excellent	Good	Fair	Poor	Total Weightage	Percentage
1.	The curriculum and syllabus are well organized and easy to follow	84	44	7	0	482	89.26%
2.	Is the entire syllabus covered by the faculty?	79	0	9	0	334	61.85%
3.	Laboratory exercise improve my ability to understand concepts and helps to relate and apply theory to practice	83	43	8	1	478	88.52%
4.	The depth of the syllabus is proportional to course outcomes	78	42	15	0	468	86.67%
5.	The correct credit were allocated to the course depending on the difficulty of the course	72	54	9	0	468	86.67%
6.	The syllabus provide the necessary skill set required by the industry	82	42	11	0	476	88.15%
7.	The books prescribed as reference material are relevant, updated and appropriate	78	46	10	1	471	87.22%
8.	The elective offered are pertinent to the specification streams and to technology advancements	78	44	12	1	469	86.85%
9.	Is the syllabus career oriented?	75	52	8	0	472	87.41%
10.	Is the pre-requisite course appropriate?	91	38	5	1	489	90.56%
11.	Does the teacher provide examples of concepts/ principles, description effectively?	77	51	7	0	475	87.96%


M. PARVATHI M.E.,

Associate Professor & Head

Department of Artificial Intelligence and Data Science

Nandha Engineering College (Autonomous)

Erode - 638 052.

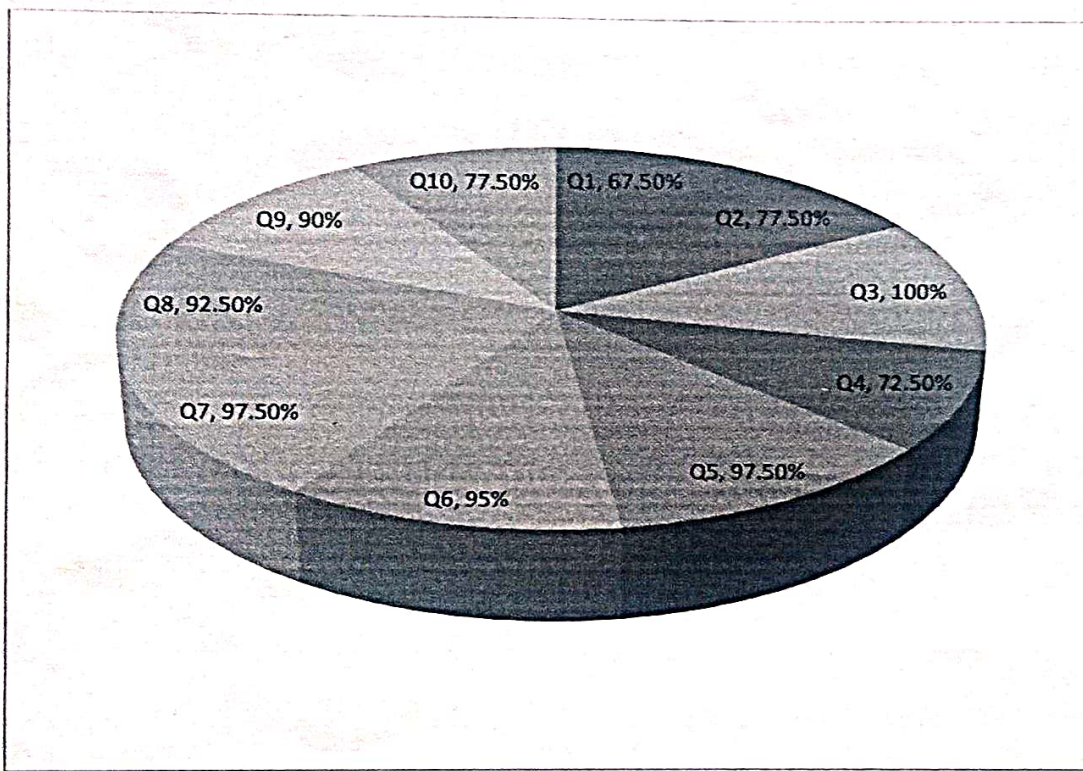


NANDHA ENGINEERING COLLEGE

(AUTONOMOUS)

(Affiliated to Anna University, Approved by AICTE, Accredited by NAAC (A+ Grade)
ERODE – 638052 TAMILNADU

STUDENT FEEDBACK REPORT ON CURRICULUM AND SYLLABUS



M. PARVATHI M.E.,
Associate Professor & Head
Department of Artificial Intelligence and Data Science
Nandha Engineering College (Autonomous)
Erode - 638 052.



NANDHA ENGINEERING COLLEGE

(AUTONOMOUS)

(Affiliated to Anna University, Approved by AICTE, Accredited by NAAC (A+ Grade)

ERODE – 638052 TAMILNADU

STUDENT FEEDBACK REPORT

ANALYSIS AND ACTION TAKEN REPORT

Feedback from the students is collected to improve the teaching learning process

Analysis


- Most of the students expressed that curriculum and syllabus was well organized.
- Discussions are interactive and engaging.
- More number of Industry related courses to be included
- Include elective courses pertinent to the specification streams in curriculum
- Students appreciate soft skills training.
- Supplementary materials are helpful.

Suggestions

- Students suggested to include more practical courses in curriculum
- Include hands-on, real-world projects to showcase learned skills.
- Integrate case studies from the industry to connect theory to practice.
- Increase focus on experiential learning through labs, workshops, and field visits.

Action taken

- Embedded courses are included in curriculum to gain in-depth practical knowledge.
- Case Study and real world examples were included in course content.
- Internship to industries is motivated to improve their technical skills.
- Value added courses are conducted to meet industrial needs.


M. PARVATHI M.E.,
Associate Professor & Head
Department of Artificial Intelligence and Data Science
Nandha Engineering College (Autonomous)
Erode - 638 052.