



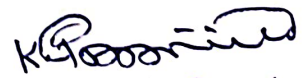
# NANDHA ENGINEERING COLLEGE

## DEPARTMENT OF AGRICULTURAL ENGINEERING

### 1.4 FEEDBACK SYSTEM

#### STUDENTS FEEDBACK

S.No	Feedback Questions	Excellent	Good	Fair	Poor	Total Weightage	Percentage (%)
1.	The curriculum and syllabus are well organized and easy to follow	52	94	2	1	495	83
2.	Is the entire syllabus covered by the faculty?	56	91	2	0	501	84
3.	Laboratory exercise improve my ability to understand concepts and helps to relate and apply theory to practice	34	96	14	5	457	77
4.	The depth of the syllabus is proportional to course outcomes	53	88	6	2	490	82
5.	The correct credit were allocated to the course depending on the difficulty of the course	48	84	14	3	475	80
6.	The syllabus provide the necessary skill set required by the industry	42	87	16	4	465	78
7.	The books prescribed as reference material are relevant, updated and appropriate	46	93	7	3	480	81
8.	The elective offered are pertinent to the specification streams and to technology advancements	49	89	8	3	482	81
9.	Is the syllabus career oriented?	60	72	12	5	485	81
10.	Is the pre-requisite course appropriate?	49	89	6	5	480	81
11.	Does the teacher provide examples of concepts/principles, description effectively?	47	93	6	3	482	81

  
Head of the Department  
Department of Agriculture Engineering  
Nandha Engineering College,  
(Autonomous)  
Erode - 638 052.

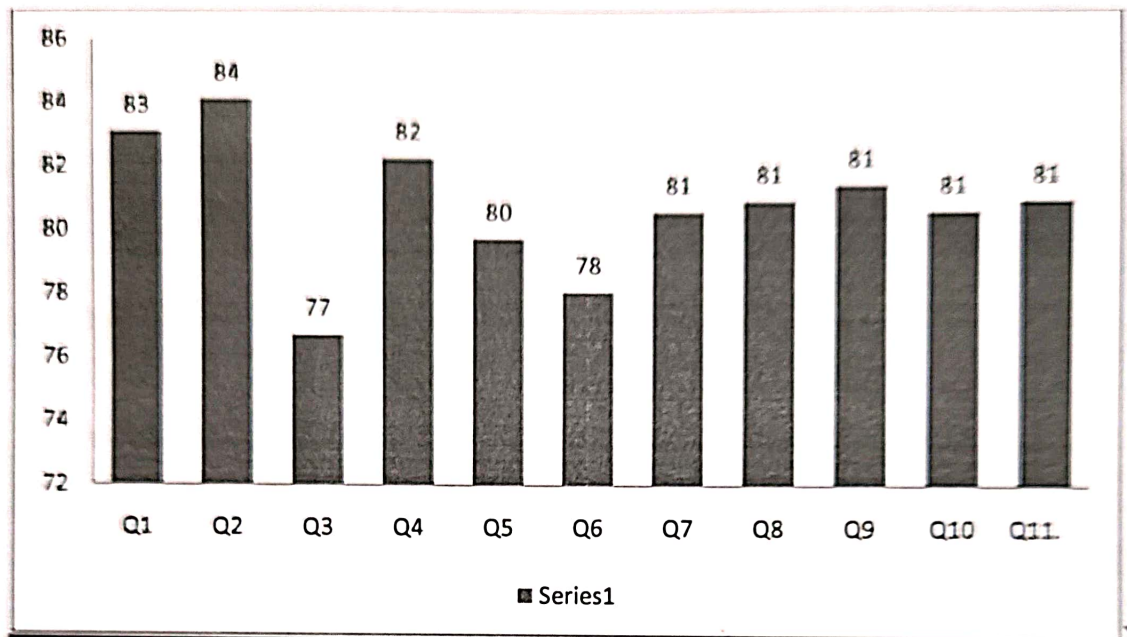


# NANDHA ENGINEERING COLLEGE

DEPARTMENT OF AGRICULTURAL ENGINEERING

## 1.4 FEEDBACK SYSTEM

### STUDENT FEEDBACK REPORT ON CURRICULUM AND SYLLABUS





# NANDHA ENGINEERING COLLEGE

DEPARTMENT OF AGRICULTURAL ENGINEERING

## 1.4 FEEDBACK SYSTEM

---

### STUDENT FEEDBACK REPORT

### ANALYSIS AND ACTION TAKEN REPORT

Feedback from the students is collected to improve the teaching learning process

#### Analysis

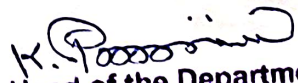
- The majority of students reported that the curriculum and syllabus were well-structured and comprehensive.
- The library's collection of textbooks and reference materials is considered sufficient and relevant to the course content.
- There is a suggestion to include a greater number of industry-specific courses to enhance practical knowledge.
- It was recommended to offer more elective courses tailored to specific streams of specialization within the curriculum.

#### Suggestions

- Students suggested to include more practical courses in curriculum
- Suggested to give more exposure to be given to improve their technical and communication skill sets.

#### Action taken

- Embedded courses have been integrated into the curriculum to provide students with hands-on, practical knowledge.
- The curriculum includes "Soft Analytical Skills-I&II" and "Soft Analytical Skills-III" courses to enhance students problem-solving and analytical abilities.
- Internship opportunities with industries are strongly encouraged to help students refine their technical skills and gain real-world experience.

  
Head of the Department  
Department of Agriculture Engineering  
Nandha Engineering College,  
(Autonomous)  
Erode - 638 052.



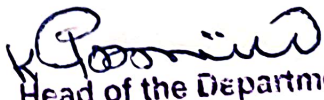
# NANDHA ENGINEERING COLLEGE

## DEPARTMENT OF AGRICULTURAL ENGINEERING

### 1.4 FEEDBACK SYSTEM

#### FACULTY FEEDBACK

S.No	Feedback Questions	Excellent	Good	Fair	Poor	Total Weightage	Percentage (%)
1	Curriculum and syllabus on par with recent trends	8	6	0	0	50	89
2	Elucidation of course outcomes	12	2	0	0	54	96
3	Adequacy of Academic tasks in the course plan	11	3	0	0	53	95
4	Syllabus in accordance with competitive examinations	12	2	0	0	54	96
5	Importance and relevance of the course to industry and societal needs	10	4	0	0	52	93
6	Accessibility of relevant reading Materials and E-sources in the library	10	4	0	0	52	93
7	Course equilibrium between theory and application	11	3	0	0	53	95
8	Privilege to propose, modify, suggest and incorporate new topics in the syllabus through proper forum	9	5	0	0	51	91
9	Flexibility in adopting new techniques/ tools strategies in reaching	12	2	0	0	54	96
10	Scope provided for research activities	5	9	0	0	47	84

  
Head of the Department  
Department of Agriculture Engineering  
Nandha Engineering College  
(Autonomous)  
Erode - 638 052



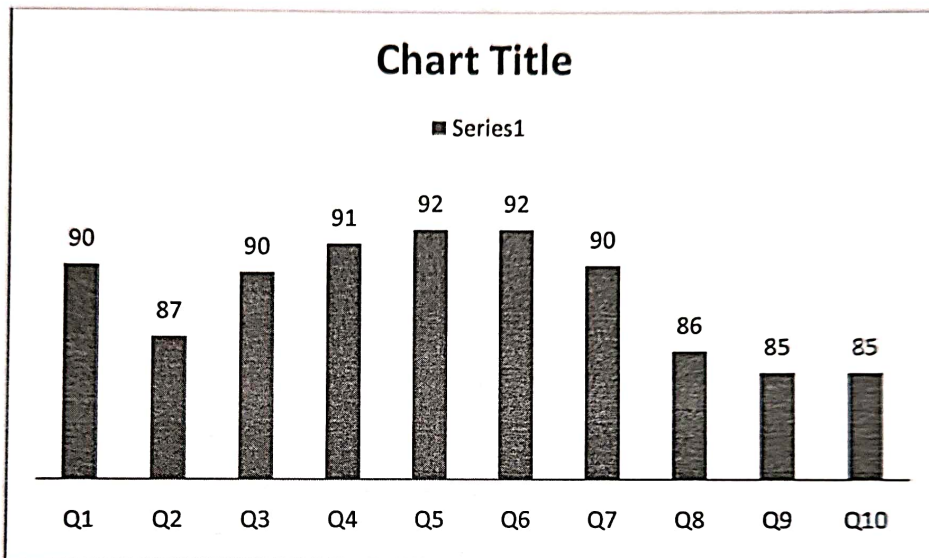
# NANDHA ENGINEERING COLLEGE

DEPARTMENT OF AGRICULTURAL ENGINEERING

## 1.4 FEEDBACK SYSTEM

---

### FACULTY FEEDBACK ON CURRICULAM AND SYLLABUS





# NANDHA ENGINEERING COLLEGE

## DEPARTMENT OF AGRICULTURAL ENGINEERING

### 1.4 FEEDBACK SYSTEM

---

#### FACULTY FEEDBACK REPORT

#### ANALYSIS AND ACTION TAKEN REPORT

Following are the analysis and suggestions which are given by the Faculty members:

##### Analysis:

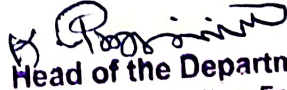
- Faculty members agreed that the Curriculum and Syllabus was on par with recent trends and it has relevance to the Industry needs.
- Faculty members commended the syllabus for its well-rounded coverage of fundamental and advanced topics such as soil and water conservation, irrigation systems, farm mechanization, and post-harvest technology.
- The curriculum equips students with a solid foundation in both theoretical and applied aspects of Agricultural Engineering.
- The curriculum's focus on practical learning through lab sessions, field visits, internships, and industry projects was highlighted as a significant strength.

##### Suggestions:

- Faculty suggested enhancing industry collaboration for better exposure to current agricultural technologies and practices.
- Faculty recommended including advanced topics like IoT in agriculture, drone technology, and AI for precision farming.

##### Action taken:

- Industry partnerships have been strengthened by signing MoUs with agricultural companies like Mobitech - Irrigation automation and research institutions. More guest lectures and workshops by industry experts have been introduced.
- New elective courses focusing on IoT applications, drone-based monitoring, in agriculture have been added to the curriculum.

  
Head of the Department  
Department of Agriculture Engineering  
Nandha Engineering College,  
(Autonomous)  
Erode - 638 052.



# NANDHA ENGINEERING COLLEGE

## DEPARTMENT OF AGRICULTURAL ENGINEERING

### 1.4 FEEDBACK SYSTEM

#### ALUMNI FEEDBACK

S.No	Feedback Questions	Excellent	Good	Fair	Poor	Total Weightage	Percentage (%)
1.	Academic initiatives taken by the college to improve technical or industry required knowledge is sufficient	48	24	3	0	270	90
2.	Co-curricular initiatives taken by the college to improve the students technical/ professional skills	42	26	7	0	260	87
3.	Whether the choice based credit system was in tune with the existing or emerging trends of the industry	46	27	2	0	269	90
4.	Whether the Programme offered to you was suitably demanding the industrial needs	51	19	5	2	273	91
5.	Was the Syllabus prescribed for the programmes are well organized and structured?	52	20	3	1	275	92
6.	Content of the courses (subjects) offered under my programme was up to date and relevant	48	25	2	4	275	92
7.	Project work / Internships offered under my programme was challenging and constructive	47	26	2	0	270	90
8.	Open Elective courses offered were diverse and resourceful	25	12	6	2	258	86
9.	Overall learning environment offered in the campus	15	24	5	1	255	85

**Head of the Department**  
Department of Agriculture Engineering  
Nandha Engineering College  
(Autonomous)  
Erode - 638 052.

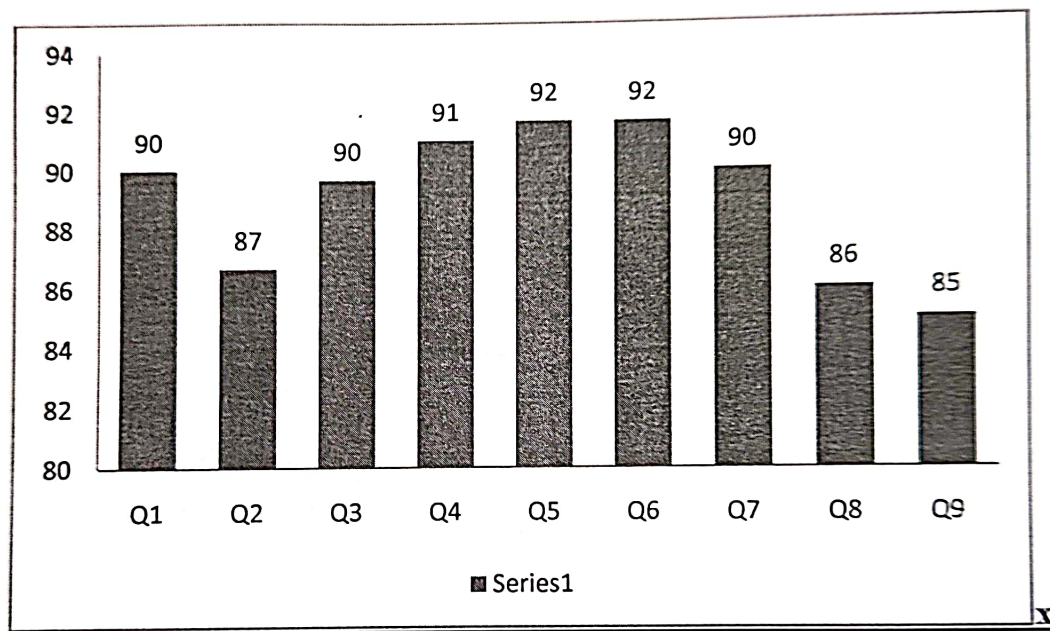


# NANDHA ENGINEERING COLLEGE

DEPARTMENT OF AGRICULTURAL ENGINEERING

## 1.4 FEEDBACK SYSTEM

### ALUMNI FEEDBACK REPORT ON CURRICULUM AND SYLLABUS







# NANDHA ENGINEERING COLLEGE

## DEPARTMENT OF AGRICULTURAL ENGINEERING

### 1.4 FEEDBACK SYSTEM

---

#### ALUMNI FEEDBACK REPORT

#### ANALYSIS AND ACTION TAKEN REPORT

Following are the Analysis and Suggestions which are given by the Alumni to our department:

##### Analysis:


- A significant majority of alumni (85%) expressed satisfaction with the relevance of the syllabus, stating that it effectively prepares students for real-world challenges in agricultural engineering.
- Many respondents appreciated the inclusion of practical sessions, lab work, and project-based learning, which provided hands-on experience.
- Alumni acknowledged the incorporation of emerging topics like GIS and remote sensing, sustainable agricultural practices, and automation in farming, reflecting the department's commitment to staying updated with industry trends.

##### Suggestion:

- Additional training on industry-relevant subjects could be incorporated to enhance practical knowledge and skill development.

##### Action taken:

- Industrial Seminar conducted by industry experts provide students with in-depth knowledge of industry-relevant topics.
- Students are encouraged to undertake industry projects and industry training are offered opportunities for internships during their seventh and eighth semesters.

  
**Head of the Department**  
Department of Agriculture Engineering  
Nandha Engineering College,  
(Autonomous)  
Erode - 638 052.



# NANDHA ENGINEERING COLLEGE

## DEPARTMENT OF AGRICULTURAL ENGINEERING

### 1.4 FEEDBACK SYSTEM

#### EMPLOYER FEEDBACK

S.No	Feedback Questions	Excellent	Good	Fair	Poor	Total Weightage	Percentage (%)
1.	Satisfaction with the calibre of the graduates	4	4	0	0	28	88
2.	Satisfaction that graduates are learning the right skills/courses relevant to your organisation's requirements	2	6	0	0	26	81
3.	Satisfaction with the speed at which course content is being adapted to meet the changing industrial needs	5	3	0	0	29	91
4.	Institutional Reputation	5	3	0	1	30	94
5.	Relevant subject or Discipline Knowledge	3	5	0	0	27	84
6.	Quality of Employability Skills and Attributes of our graduates	5	3	0	0	29	91
7.	The institution produces high quality graduates	6	2	0	0	30	94
8.	Successful past experience of recruiting from this institution	5	3	0	0	29	91
9.	Organisation and institution collaborate on joint research projects	4	4	0	0	28	88
10.	Ability to apply professional and / or technical knowledge in the workplace	3	5	0	0	27	84

*K. Poornima*  
Head of the Department  
Department of Agriculture Engineering  
Nandha Engineering College,  
(Autonomous)  
Erode - 638 052.

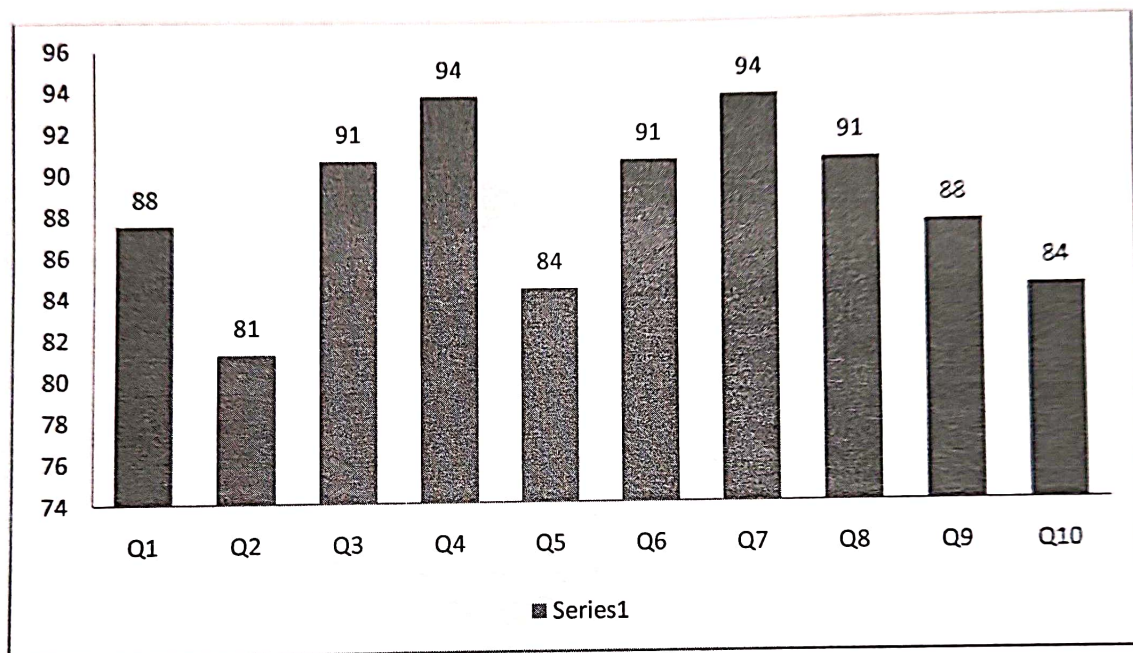


# NANDHA ENGINEERING COLLEGE

## DEPARTMENT OF AGRICULTURAL ENGINEERING

### 1.4 FEEDBACK SYSTEM

#### EMPLOYER FEEDBACK REPORT ON CURRICULUM AND SYLLABUS





# NANDHA ENGINEERING COLLEGE

## DEPARTMENT OF AGRICULTURAL ENGINEERING

### 1.4 FEEDBACK SYSTEM

---

#### EMPLOYER FEEDBACK REPORT

#### ANALYSIS AND ACTION TAKEN REPORT

Feedback from the Employers is collected to improve the teaching learning process

#### **Analysis**

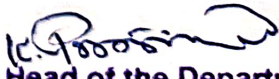
- Employers commended the curriculum for its strong alignment with current industry trends and demands, particularly in areas like sustainable agriculture, precision farming, and farm mechanization
- Strong foundational skills in soil and water conservation, post-harvest technology, and renewable energy systems were appreciated.

#### **Suggestions:**

- Industry-institute interactive initiatives can be further enhanced to foster stronger connections.
- Collaborative projects with industry partners should be encouraged to provide students with practical exposure.
- Additional training programs can be implemented to strengthen students' technical skill sets.

#### **Action Taken:**

- Projects with an industry focus will be promoted to enhance practical learning.
- Students participate in internships and in-plant training programs to develop and refine their technical skills.

  
**Head of the Department**  
Department of Agriculture Engineering  
Nandha Engineering College.  
(Autonomous)  
Erode - 638 052.