



NANDHA ENGINEERING COLLEGE

(AUTONOMOUS)

(Approved by AICTE, New Delhi and Affiliated to Anna University, Chennai)

ERODE – 638052 TAMIL NADU

Email: principal@nandhaengg.org Mobile : 73737 12234

DEPARTMENT OF BIOMEDICAL ENGINEERING

ALUMINI FEEDBACK ON CURRICULAM AND SYLLABUS

SURVEY COUNT = 29							
S. No	Feedback Questions	Excellent	Good	Fair	Poor	Total Weightage	Percentage
1.	Academic initiatives taken by the college to improve technical or industry required knowledge is sufficient	16	9	4	0	99	85.34
2.	Co-curricular initiatives taken by the college to improve the students technical/ professional skills	18	7	4	0	101	87.07
3.	Whether the Choice Based Credit System was in tune with the existing or emerging trends of the industry	17	7	5	0	99	85.34
4.	Whether the Programme offered to you was suitably demanding the industrial need	17	9	3	0	101	87.07
5.	Was the Syllabus prescribed for the programme are well organized and structured?	19	6	4	0	102	87.93
6.	Content of the courses (subjects) offered under my programme was up to date and relevant	20	5	4	0	103	88.79
7.	Project work / Internships offered under my programme was challenging and constructive	19	7	3	0	103	88.79
8.	Open Elective courses offered were diverse and resourceful	18	8	3	0	102	87.93
9.	Overall learning environment offered in the campus	17	8	4	0	100	86.21



NANDHA ENGINEERING COLLEGE

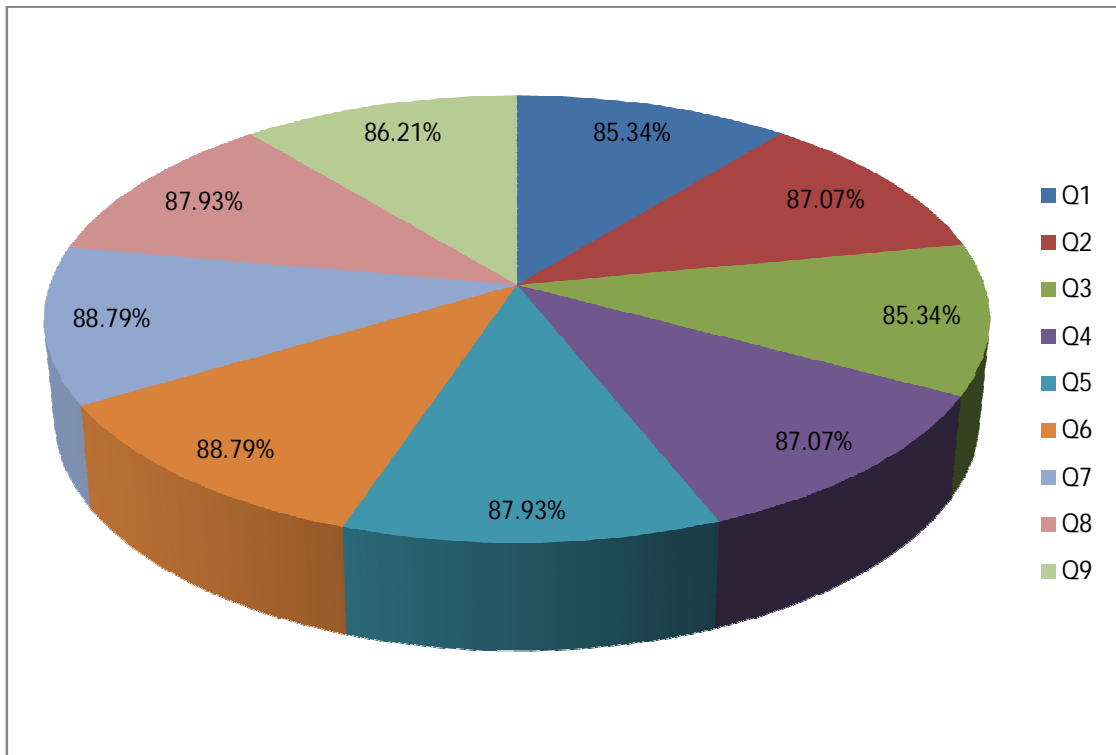
(AUTONOMOUS)

(Approved by AICTE, New Delhi and Affiliated to Anna University, Chennai)

ERODE – 638052 TAMIL NADU

Email: principal@nandhaengg.org Mobile : 73737 12234

ALUMNI FEEDBACK REPORT ON CURRICULUM AND SYLLABUS





NANDHA ENGINEERING COLLEGE

(AUTONOMOUS)

(Approved by AICTE, New Delhi and Affiliated to Anna University, Chennai)

ERODE – 638052 TAMIL NADU

Email: principal@nandhaengg.org Mobile : 73737 12234

DEPARTMENT OF BIOMEDICAL ENGINEERING

ALUMNI FEEDBACK REPORT ON CURRICULUM AND SYLLABUS

ANALYSIS AND ACTION TAKEN REPORT

Following are the Analysis and Suggestions which are given by the Alumni to our department:

Analysis:

- Many students were appreciative of the Syllabus prescribed for the programme and feel it was well organized and structured.
- The number of subjects can be increased that is suitable to meet the demand of industrial needs.
- Open Elective courses offered were diverse and resourceful.

Suggestion:

- More training on Industry related subjects can be provided.
- Suggested on introducing more biomedical core course in the upcoming curriculum.

Action taken:

- More Industry Institute Interactive activities to be arranged.
- Program Specific Courses are introduced in R22 curriculum:
 - 22BMC09 – Radiology Equipment
 - 22BMC11 – Fundamentals of Healthcare Analytics
- We accept all the Suggestions/Comments/Appreciations expressed by Alumni and good practices will be continued in future also.


HEAD
DEPARTMENT OF BME,
NANDHA ENGINEERING COLLEGE
(Autonomous),
ERODE- 52.



NANDHA ENGINEERING COLLEGE

(AUTONOMOUS)

(Approved by AICTE, New Delhi and Affiliated to Anna University, Chennai)

ERODE – 638052 TAMIL NADU

Email: principal@nandhaengg.org Mobile : 73737 12234

DEPARTMENT OF BIOMEDICAL ENGINEERING

EMPLOYER FEEDBACK ON CURRICULAM AND SYLLABUS

SURVEY COUNT = 10							
S. No	Feedback Questions	Excellent	Good	Fair	Poor	Total Weightage	Percentage
1.	Satisfaction with the calibre of the graduates	7	3	0	0	37	92.5
2.	Satisfaction that graduates are learning the right skills/courses relevant to your organisation's requirements	6	4	0	0	36	90
3.	Satisfaction with the speed at which course content is being adapted to meet the changing industrial needs	6	4	0	0	36	90
4.	Institutional Reputation	10	0	0	0	40	100
5.	Relevant subject or Discipline Knowledge	4	6	0	0	34	85
6.	Quality of Employability Skills and Attributes of our graduates	7	3	0	0	37	92.5
7.	The institution produces high quality graduates	5	5	0	0	35	87.5
8.	Successful past experience of recruiting from this institution	4	6	0	0	34	85
9.	Organisation and institution collaborate on joint research projects	4	6	0	0	34	85
10.	Ability to apply professional and / or technical knowledge in the workplace	7	3	0	0	37	92.5



NANDHA ENGINEERING COLLEGE

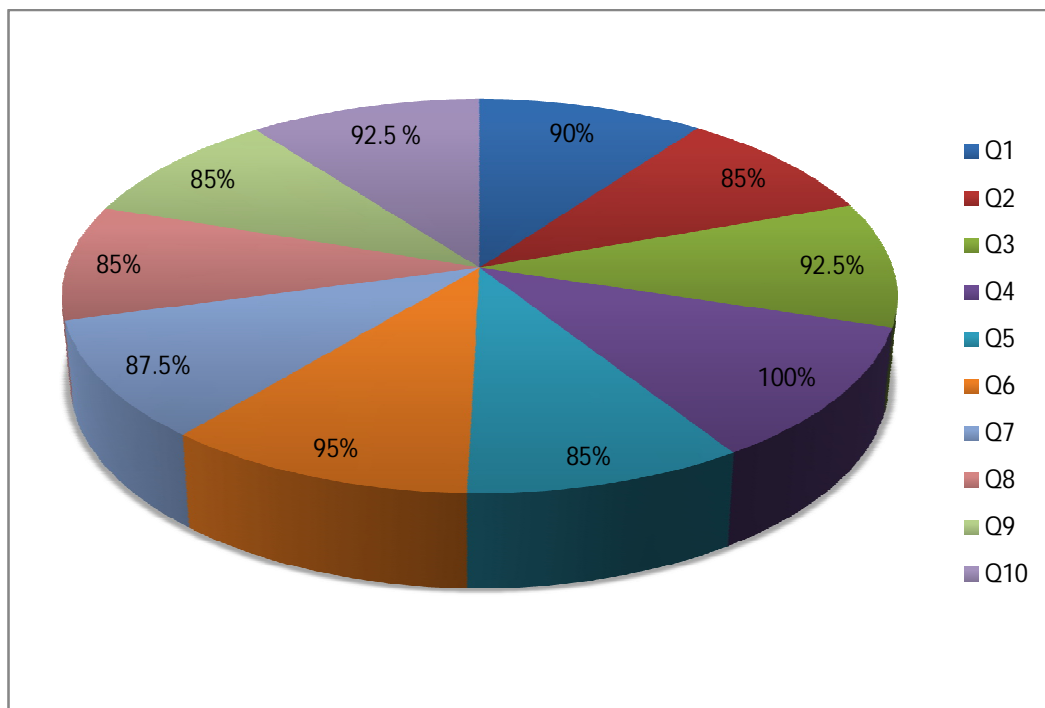
(AUTONOMOUS)

(Approved by AICTE, New Delhi and Affiliated to Anna University, Chennai)

ERODE – 638052 TAMIL NADU

Email: principal@nandhaengg.org Mobile : 73737 12234

EMPLOYER FEEDBACK REPORT ON CURRICULUM AND SYLLABUS





NANDHA ENGINEERING COLLEGE

(AUTONOMOUS)

(Approved by AICTE, New Delhi and Affiliated to Anna University, Chennai)

ERODE – 638052 TAMIL NADU

Email: principal@nandhaengg.org Mobile : 73737 12234

DEPARTMENT OF BIOMEDICAL ENGINEERING

EMPLOYER FEEDBACK REPORT ON CURRICULUM AND SYLLABUS

ANALYSIS AND ACTION TAKEN REPORT

Points on Analysis

Most of the Employers have expressed that

- They are satisfied with the general calibre of our graduates.
- They have acknowledged the general reputation of the institution.
- Our graduates are possessed with employable skills.
- Our graduates are able to apply their technical knowledge in their work place suggestions.

Suggestions:

- Industry Institute interactive activities may be strengthened.
- Industry based project work may be given to the students.
- More industry oriented topics to be added in the curriculum.
- More training to be given to improve their Technical, Employable and Communication skill sets.

Action Taken:

- Project Based learning module will be made mandatory.
- Industry-based projects will be encouraged.
- More number of Industry relevant Value-Added Courses to be conducted.


HEAD
DEPARTMENT OF BME,
NANDHA ENGINEERING COLLEGE
(Autonomous),
ERODE- 52.



NANDHA ENGINEERING COLLEGE

(AUTONOMOUS)

(Approved by AICTE, New Delhi and Affiliated to Anna University, Chennai)

ERODE – 638052 TAMIL NADU

Email: principal@nandhaengg.org Mobile : 73737 12234

DEPARTMENT OF BIOMEDICAL ENGINEERING

FACULTY FEEDBACK ON CURRICULAM AND SYLLABUS

SURVEY COUNT = 9							
S. No	Feedback Questions	Excellent	Good	Fair	Poor	Total Weightage	Percentage
1	Curriculum and syllabus on par with recent trends	6	2	1	0	32	88.89
2	Elucidation of course outcomes	5	4	0	0	32	88.89
3	Adequacy of Academic tasks in the course plan	4	5	0	0	31	86.11
4	Syllabus in accordance with competitive examinations	7	2	0	0	34	94.44
5	Importance and relevance of the course to industry and societal needs	6	3	0	0	33	91.67
6	Accessibility of relevant reading Materials and E-sources in the library	7	2	0	0	34	94.44
7	Course equilibrium between theory and application	4	5	0	0	31	86.11
8	Privilege to propose, modify, suggest and incorporate new topics in the syllabus through proper forum	6	3	0	0	33	91.67
9	Flexibility in adopting new techniques/ tools strategies in reaching	7	2	0	0	34	94.44
10	Scope provided for research activities	5	4	0	0	32	88.89



NANDHA ENGINEERING COLLEGE

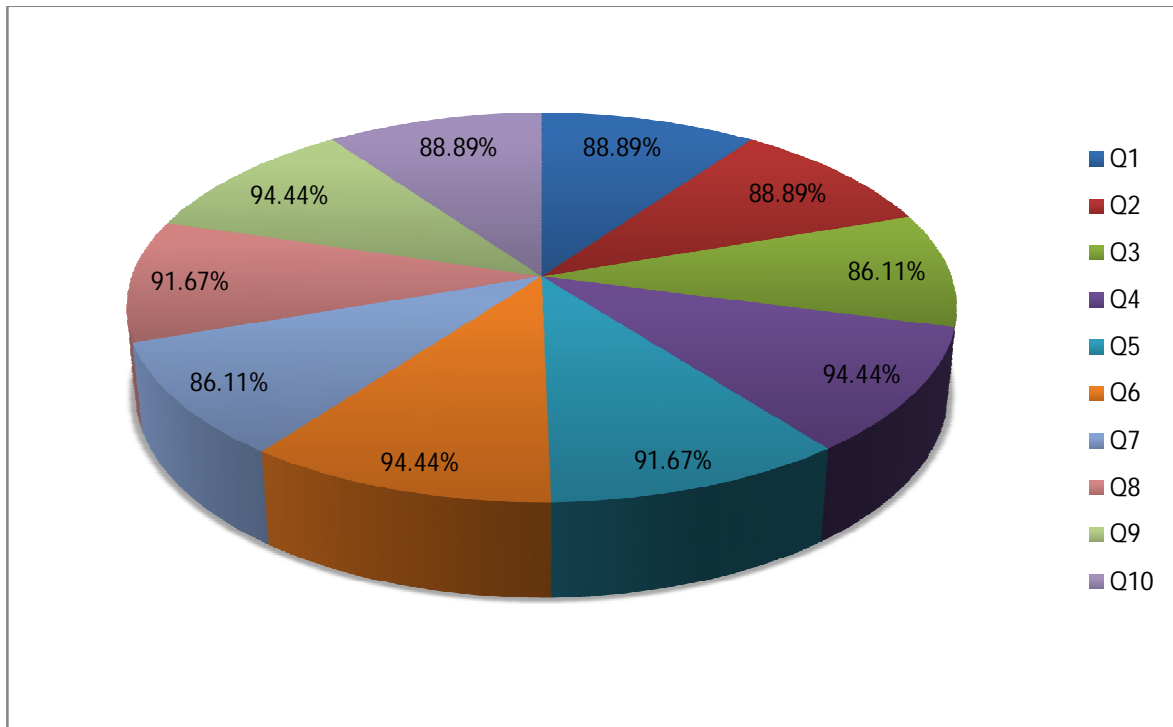
(AUTONOMOUS)

(Approved by AICTE, New Delhi and Affiliated to Anna University, Chennai)

ERODE – 638052 TAMIL NADU

Email: principal@nandhaengg.org Mobile : 73737 12234

FACULTY FEEDBACK ON CURRICULAM AND SYLLABUS





NANDHA ENGINEERING COLLEGE

(AUTONOMOUS)

(Approved by AICTE, New Delhi and Affiliated to Anna University, Chennai)

ERODE – 638052 TAMIL NADU

Email: principal@nandhaengg.org Mobile : 73737 12234

DEPARTMENT OF BIOMEDICAL ENGINEERING

FACULTY FEEDBACK REPORT ON CURRICULUM AND SYLLABUS

ANALYSIS AND ACTION TAKEN REPORT

Following are the analysis and suggestions which are given by the Faculty members:

Analysis:

- Majority of faculty members strongly agreed that the Curriculum and Syllabus was on par with recent trends and it has relevance to the Industry and Societal needs.
- Elucidation of Course Outcomes adequately done.
- Learning resource materials available in the library is adequate and accessible.
- Faculty has enough freedom through the Board of Studies that has privilege to propose, modify, suggest and include new topics in the syllabus.
- Appreciated that flexibility given to them to adopt new techniques, tools and strategies in teaching to improve teaching learning process.

Suggestions:

- Our faculty members suggested on making few of Program Specific Electives to Program Core Courses in the upcoming curriculum.
- Faculties suggested on altering the following course titles to discern and discriminate distinctly
 - 17BMC05 - Biomedical Instrumentation – I to Biomedical Instrumentation
 - 17BMC07 - Biomedical Instrumentation – II to Diagnostic and Therapeutic Equipment



NANDHA ENGINEERING COLLEGE

(AUTONOMOUS)

(Approved by AICTE, New Delhi and Affiliated to Anna University, Chennai)

ERODE – 638052 TAMIL NADU

Email: principal@nandhaengg.org Mobile : 73737 12234

Action taken:

- As per faculties' suggestion, the following courses are added up to Program Core Courses in R22 curriculum.
 - 22BMC09 – Radiology Equipment
 - 22BMC11 – Fundamentals of Healthcare Analytics

We accept all the appreciations expressed by Faculty members about the flexibility on framing Curriculum and Syllabus and good practices will be continued in future also.


HEAD
DEPARTMENT OF BME,
NANDHA ENGINEERING COLLEGE
(Autonomous),
ERODE- 52.



NANDHA ENGINEERING COLLEGE

(AUTONOMOUS)

(Approved by AICTE, New Delhi and Affiliated to Anna University, Chennai)

ERODE – 638052 TAMIL NADU

Email: principal@nandhaengg.org Mobile : 73737 12234

DEPARTMENT OF BIOMEDICAL ENGINEERING STUDENTS FEEDBACK ON CURRICULAM AND SYLLABUS

SURVEY COUNT = 177							
S. No	Feedback Questions	Excellent	Good	Fair	Poor	Total Weightage	Percentage
1.	The curriculum and syllabus are well organized and easy to follow	105	68	4	0	632	89.27
2.	Is the entire syllabus covered by the faculty?	98	69	10	0	619	87.43
3.	Laboratory exercise improve my ability to understand concepts and helps to relate and apply theory to practice	98	67	12	0	617	87.15
4.	The depth of the syllabus is proportional to course outcomes	97	68	12	0	616	87.01
5.	The correct credit were allocated to the course depending on the difficulty of the course	107	65	5	0	633	89.41
6.	The syllabus provide the necessary skill set required by the industry	108	64	5	0	634	89.55
7.	The books prescribed as reference material are relevant, updated and appropriate	102	67	8	0	625	88.28
8.	The elective offered are pertinent to the specification streams and to technology advancements	95	74	8	0	618	87.29
9.	Is the syllabus career oriented?	108	61	8	0	631	89.12
10.	Is the pre-requisite course appropriate?	104	63	10	0	625	88.28
11.	Does the teacher provide examples of concepts/principles, description effectively?	117	52	8	0	640	90.40



NANDHA ENGINEERING COLLEGE

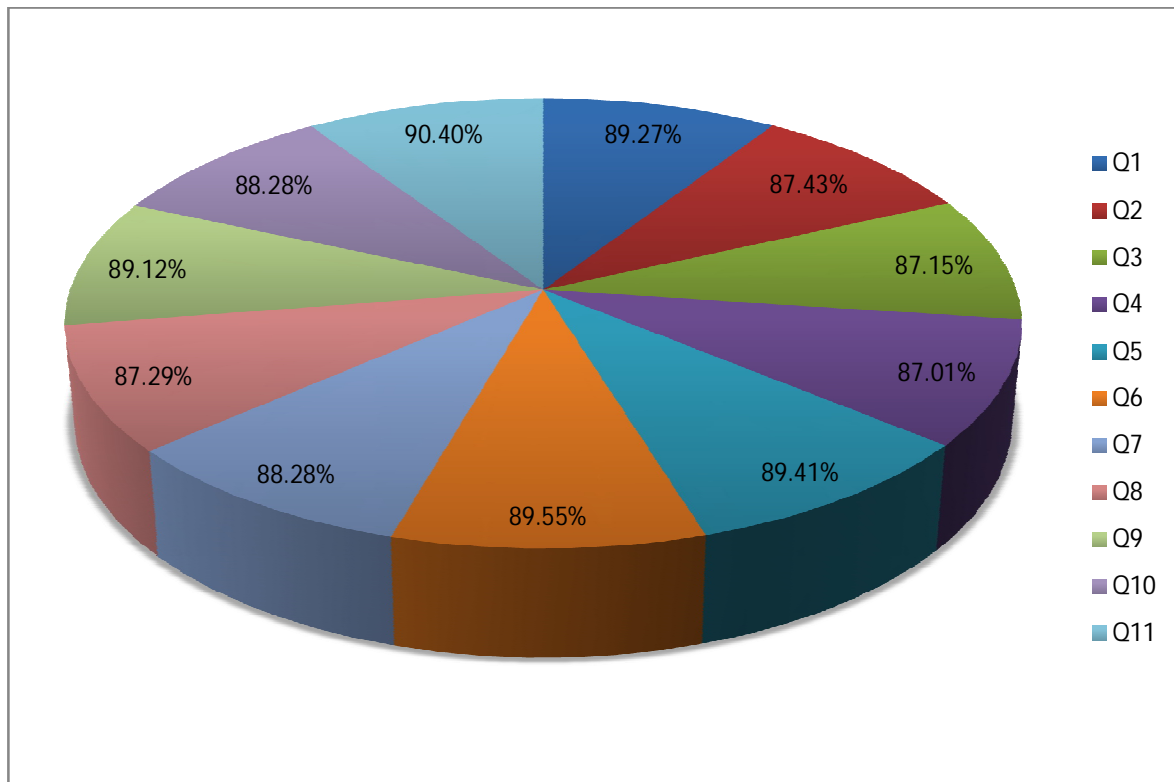
(AUTONOMOUS)

(Approved by AICTE, New Delhi and Affiliated to Anna University, Chennai)

ERODE – 638052 TAMIL NADU

Email: principal@nandhaengg.org Mobile : 73737 12234

STUDENT FEEDBACK REPORT ON CURRICULUM AND SYLLABUS





NANDHA ENGINEERING COLLEGE

(AUTONOMOUS)

(Approved by AICTE, New Delhi and Affiliated to Anna University, Chennai)

ERODE – 638052 TAMIL NADU

Email: principal@nandhaengg.org Mobile : 73737 12234

DEPARTMENT OF BIOMEDICAL ENGINEERING
STUDENT FEEDBACK REPORT ON CURRICULUM AND SYLLABUS
ANALYSIS AND ACTION TAKEN REPORT

Feedback from the students is collected to improve the teaching learning process

Analysis

- Most of the students expressed that curriculum and syllabus was well organized.
- They are satisfied with the laboratory exercises which help them to improve their practical knowledge.
- Text books and reference books available in the library are adequate and relevant.
- Elective courses offered were relevant and useful to them to meet the industry requirements.

Suggestions

More number of add on and one credit courses to be offered for relevant

- exposure to the current technological developments.
- More exposure to be given to improve their Technical, Employable and Communication skill sets.

Action taken

- More number of Value-Added Courses to be conducted on holistic perspective in current industry challenges and to improve their confidence level.
- More number of seminars, hand-on sessions and workshops to be planned.


HEAD
DEPARTMENT OF BME,
NANDHA ENGINEERING COLLEGE
(Autonomous),
ERODE- 52.