



NANDHA ENGINEERING COLLEGE

(Autonomous)

Affiliated to Anna University Chennai ✦ Approved by AICTE ✦ Accredited by NBA - New Delhi

Pitchandampalayam (P.O), Valkkalmedu, Erode - Perundurai Road, Erode - 638 052

Phone : 04294 - 225585, 223711, 223722, 226393 Mobile : 73737 23722 Fax : 04294 - 224787

Website : www.nandhaengg.org

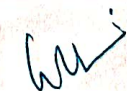
E.mail : info@nandhaengg.org

DEPARTMENT OF ELECTRICAL AND ELECTRONICS ENGINEERING

1.4 FEEDBACK SYSTEM

STUDENTS FEEDBACK

S.No	Feedback Questions	Excellent	Good	Fair	Poor	Total Weightage	Percentage
1.	The curriculum and syllabus are well organized and easy to follow	24	24	1	0	170	86.7
2.	Is the entire syllabus covered by the faculty?	21	24	3	1	163	83.1
3.	Laboratory exercise improve my ability to understand concepts and helps to relate and apply theory to practice	22	25	1	1	166	84.6
4.	The depth of the syllabus is proportional to course outcomes	22	23	3	1	164	83.6
5.	The correct credit were allocated to the course depending on the difficulty of the course	24	21	2	2	165	84.1
6.	The syllabus provide the necessary skill set required by the industry	21	26	1	1	165	84.1
7.	The books prescribed as reference material are relevant, updated and appropriate	24	22	2	1	167	85.2
8.	The elective offered are pertinent to the specification streams and to technology advancements	24	21	3	1	166	84.6
9.	Is the syllabus career oriented?	23	22	3	1	165	84.1
10.	Is the pre-requisite course appropriate?	21	26	1	1	165	84.1
11.	Does the teacher provide examples of concepts/principles, description effectively?	27	19	2	1	170	86.7


Dr.G.RAMANI, M.E., Ph D ,
Professor & Head
Department of EEE
Nandha Engineering College (Autonomous)
Erode - 638 052



NANDHA ENGINEERING COLLEGE (Autonomous)

Affiliated to Anna University Chennai ✦ Approved by AICTE ✦ Accredited by NBA - New Delhi

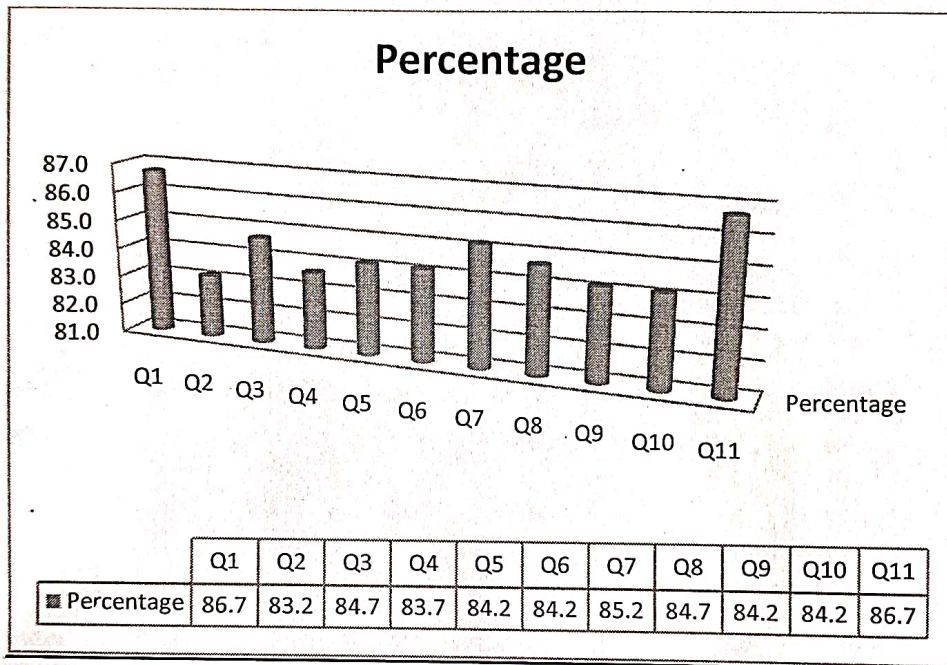
Pitchandampalayam (P.O), Valkkalmedu, Erode - Perundurai Road, Erode - 638 052

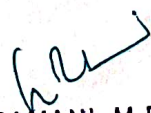
Phone : 04294 - 225585, 223711, 223722, 226393 Mobile : 73737 23722 Fax : 04294 - 224787

Website : www.nandhaengg.org

E.mail : info@nandhaengg.org

STUDENT FEEDBACK REPORT ON CURRICULUM AND SYLLABUS




Dr. G. RAMANI, M.E., Ph D ,
 Professor & Head
 Department of EEE
Nandha Engineering College (Autonomous)
 Erode - 638 052



NANDHA ENGINEERING COLLEGE (Autonomous)

Affiliated to Anna University Chennai ✦ Approved by AICTE ✦ Accredited by NBA - New Delhi

Pitchandampalayam (P.O), Valkkalmedu, Erode - Perundural Road, Erode - 638 052

Phone : 04294 - 225585, 223711, 223722, 226393 Mobile : 73737 23722 Fax : 04294 - 224787

Website : www.nandhaengg.org

E.mail : Info@nandhaengg.org

STUDENT FEEDBACK REPORT

ANALYSIS AND ACTION TAKEN REPORT

Feedback from the students is collected to improve the teaching learning process

Analysis


- The feedback scores indicate an overall positive perception of the curriculum, with percentages consistently above 83%. This demonstrates that the syllabus is well-structured, relevant, and aligned with academic and industry needs.
- The highest scores (86.7%) reflect satisfaction with the organization of the syllabus and the effective use of examples by faculty, indicating strong engagement and clarity in teaching.

Suggestions

- Update and enhance elective courses to ensure alignment with the latest technological advancements and industry requirements.
- Provide more in-depth coverage of syllabus content and additional resources or workshops to strengthen the application of theoretical knowledge.

Action taken

- Additional elective options focusing on emerging fields and skills will be introduced in R22 Regulation.
- Faculty will be encouraged to incorporate more industry-oriented case studies and practical examples during lectures.


Dr. G. RAMANI, M.E., Ph.D.,
Professor & Head
Department of EEE
Nandha Engineering College (Autonomous)
Erode - 638 052



NANDHA ENGINEERING COLLEGE

(Autonomous)

Affiliated to Anna University Chennai ❖ Approved by AICTE ❖ Accredited by NBA - New Delhi

Pitchandampalayam (P.O), Valkkalmedu, Erode - Perundurai Road, Erode - 638 052

Phone : 04294 - 225585, 223711, 223722, 226393 Mobile : 73737 23722 Fax : 04294 - 224787

Website : www.nandhaengg.org

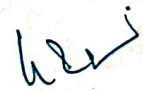
E.mail : info@nandhaengg.org

DEPARTMENT OF ELECTRICAL AND ELECTRONICS ENGINEERING

1.4 FEEDBACK SYSTEM

ALUMNI FEEDBACK

S.No	Feedback Questions	Excellent	Good	Fair	Poor	Total Weightage	Percentage
1.	Academic initiatives taken by the college to improve technical or industry required knowledge is sufficient	22	18	4	0	150	85.2
2.	Co-curricular initiatives taken by the college to improve the students technical/ professional skills	20	23	1	0	151	85.8
3.	Whether the choice based credit system was in tune with the existing or emerging trends of the industry	25	16	3	0	154	87.5
4.	Whether the Programme offered to you was suitably demanding the industrial needs	28	14	2	0	158	89.7
5.	Was the Syllabus prescribed for the programmes are well organized and structured?	29	13	2	0	159	90.3
6.	Content of the courses (subjects) offered under my programme was up to date and relevant	23	17	4	0	151	85.8
7.	Project work / Internships offered under my programme was challenging and constructive	29	15	0	0	161	91.4
8.	Open Elective courses offered were diverse and resourceful	32	10	2	0	162	92.0
9.	Overall learning environment offered in the campus	29	13	2	0	159	90.3


Dr. G. RAMANI, M.E., Ph D ,
Professor & Head
Department of EEE
Nandha Engineering College (Autonomous)
Erode - 638 052



NANDHA ENGINEERING COLLEGE (Autonomous)

Affiliated to Anna University Chennai ✦ Approved by AICTE ✦ Accredited by NBA - New Delhi

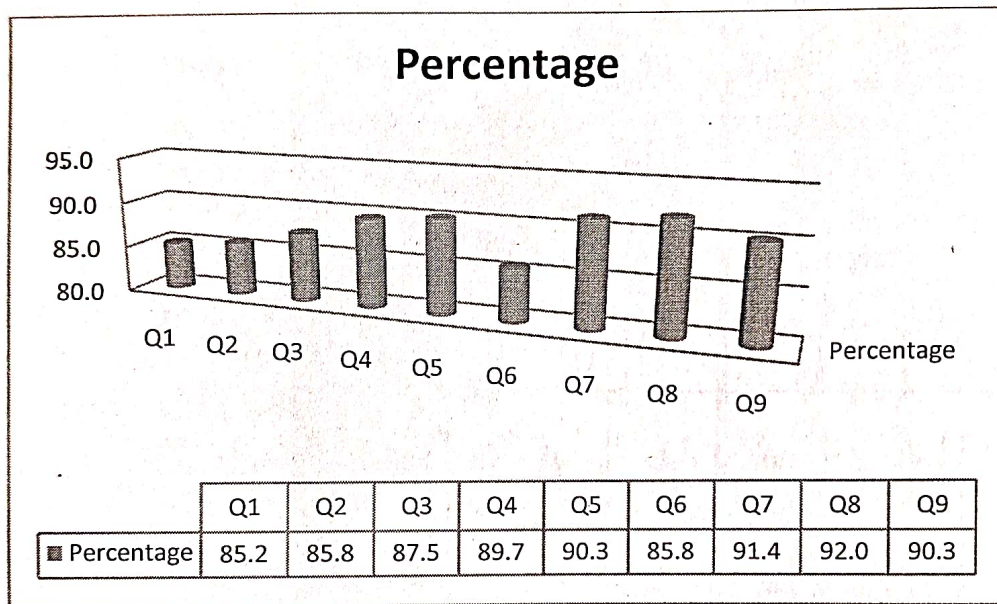
Pitchchandampalayam (P.O), Valkkalmedu, Erode - Perundurai Road, Erode - 638 052


Phone : 04294 - 225585, 223711, 223722, 226393 Mobile : 73737 23722 Fax : 04294 - 224787

Website : www.nandhaengg.org

E.mail : info@nandhaengg.org

ALUMNI FEEDBACK REPORT ON CURRICULUM AND SYLLABUS




Dr.G.RAMANI, M.E., Ph D ,
 Professor & Head
 Department of EEE
 Nandha Engineering College (Autonomous)
 Erode - 638 052



NANDHA ENGINEERING COLLEGE

(Autonomous)

Affiliated to Anna University Chennai ✦ Approved by AICTE ✦ Accredited by NBA - New Delhi

Pitchandampalayam (P.O), Valkkalmedu, Erode - Perundurai Road, Erode - 638 052

Phone : 04294 - 225585, 223711, 223722, 226393 Mobile : 73737 23722 Fax : 04294 - 224787

Website : www.nandhaengg.org

E.mail : info@nandhaengg.org

ALUMNI FEEDBACK REPORT

ANALYSIS AND ACTION TAKEN REPORT

Following are the Analysis and Suggestions which are given by the Alumni to our department:

Analysis:


- The feedback indicates a high level of satisfaction among alumni, with percentages ranging from 85.2% to 92.0%, showcasing that the college is effectively addressing industrial and academic expectations.
- Areas such as open elective courses (92.0%) and project work/internships (91.4%) received the highest satisfaction, demonstrating their effectiveness in preparing students for professional challenges.

Suggestion:

- Enhance academic and co-curricular initiatives by integrating more industry-driven workshops, certifications, and technical competitions.

Action taken:

- Collaborated with industry professionals to develop new technical modules and enhance the choice-based credit system.
- Introduced additional resources and training for faculty to stay updated with emerging trends, ensuring continuous curriculum improvement.
- Expanded the diversity of open elective courses and ensured internships are aligned with cutting-edge industrial requirements.


Dr. G. RAMANI, M.E., Ph D ,
Professor & Head
Department of EEE
Nandha Engineering College (Autonomous)
Erode - 638 052



NANDHA ENGINEERING COLLEGE (Autonomous)

Affiliated to Anna University Chennai ✦ Approved by AICTE ✦ Accredited by NBA - New Delhi

Pitchandampalayam (P.O), Valkkalmedu, Erode - Perundurai Road, Erode - 638 052

Phone : 04294 - 225585, 223711, 223722, 226393 Mobile : 73737 23722 Fax : 04294 - 224787

Website : www.nandhaengg.org


E.mail : info@nandhaengg.org

DEPARTMENT OF ELECTRICAL AND ELECTRONICS ENGINEERING

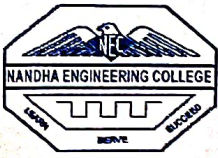
1.4 FEEDBACK SYSTEM

FACULTY FEEDBACK

S.No	Feedback Questions	Excellent	Good	Fair	Poor	Total Weightage	Percentage (%)
1	Curriculum and syllabus on par with recent trends	6	6	0	0	42	87.5
2	Elucidation of course outcomes	7	5	0	0	43	89.5
3	Adequacy of Academic tasks in the course plan	6	6	0	0	42	87.5
4	Syllabus in accordance with competitive examinations	6	6	0	0	42	87.5
5	Importance and relevance of the course to industry and societal needs	7	5	0	0	43	87.5
6	Accessibility of relevant reading Materials and E-sources in the library	6	6	0	0	42	87.5
7	Course equilibrium between theory and application	6	6	0	0	42	87.5
8	Privilege to propose, modify, suggest and incorporate new topics in the syllabus through proper forum	6	6	0	0	42	87.5
9	Flexibility in adopting new techniques/ tools strategies in reaching	4	6	2	0	38	79.1
10	Scope provided for research activities	4	6	2	0	38	79.1


Dr. G. RAMANI, M.E., Ph D,
Professor & Head

Department of EEE
Nandha Engineering College (Autonomous)
Erode - 638 052



NANDHA ENGINEERING COLLEGE

(Autonomous)

Affiliated to Anna University Chennai ✦ Approved by AICTE ✦ Accredited by NBA - New Delhi

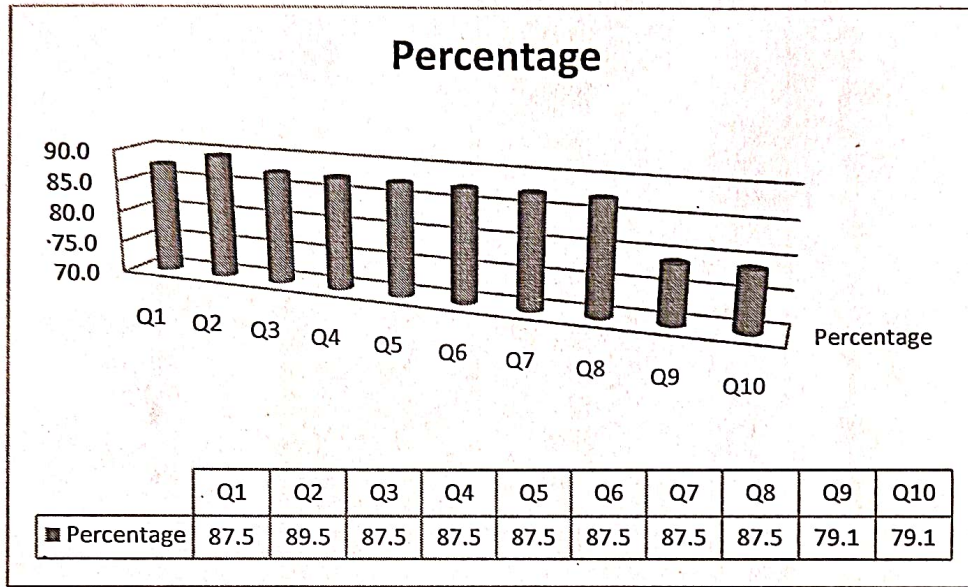
Pitchandampalayam (P.O), Valkkalmedu, Erode - Perundurai Road, Erode - 638 052

Phone : 04294 - 225585, 223711, 223722, 226393 Mobile : 73737 23722 Fax : 04294 - 224787

Website : www.nandhaengg.org

E.mail : info@nandhaengg.org

FACULTY FEEDBACK ON CURRICULAM AND SYLLABUS



Dr.G.RAMANI, M.E., Ph D ,
Professor & Head
Department of EEE
Nandha Engineering College (Autonomous)
Erode - 638 052



NANDHA ENGINEERING COLLEGE (Autonomous)

Affiliated to Anna University Chennai ✦ Approved by AICTE ✦ Accredited by NBA - New Delhi

Pitchchandampalayam (P.O), Valkkalmedu, Erode - Perundurai Road, Erode - 638 052

Phone : 04294 - 225585, 223711, 223722, 226393 Mobile : 73737 23722 Fax : 04294 - 224787

Website : www.nandhaengg.org

E.mail : Info@nandhaengg.org

FACULTY FEEDBACK REPORT ANALYSIS AND ACTION TAKEN REPORT

Following are the analysis and suggestions which are given by the Faculty members:

Analysis:


- The feedback shows a high satisfaction percentage (87.5% to 89.5%) for most aspects, including curriculum relevance, course outcomes, adequacy of academic tasks, and alignment with competitive exams and industry needs. This indicates that the existing curriculum and course structure are well-received by the faculty.
- Lower satisfaction percentages (79.1%) were noted for the flexibility in adopting new techniques/tools and the scope provided for research activities. These areas require focused attention to enhance faculty satisfaction and effectiveness.

Suggestions:

- Increase the scope for faculty involvement in research activities by providing more research grants, collaborations, and opportunities to engage in interdisciplinary research.
- Introduce regular training sessions on new teaching tools and methodologies. Provide faculty with greater autonomy to experiment with innovative teaching strategies.

Action taken:

- Organized a workshop on advanced teaching tools and strategies to improve adoption flexibility.
- Allocated additional funding and resources to support faculty research initiatives and collaborations.


Dr. G. RAMANI, M.E., Ph D ,
Professor & Head
Department of EEE
Nandha Engineering College (Autonomous)
Erode - 638 052



NANDHA ENGINEERING COLLEGE

(Autonomous)

Affiliated to Anna University Chennai * Approved by AICTE * Accredited by NBA - New Delhi

Pitchandampalayam (P.O), Valkkalmedu, Erode - Perundural Road, Erode - 638 052

Phone : 04294 - 225585, 223711, 223722, 226393 Mobile : 73737 23722 Fax : 04294 - 224787

Website : www.nandhaengg.org


E.mail : info@nandhaengg.org

DEPARTMENT OF ELECTRICAL AND ELECTRONICS ENGINEERING

1.4 FEEDBACK SYSTEM

EMPLOYER FEEDBACK

S.No	Feedback Questions	Excellent	Good	Fair	Poor	Total Weightage	Percentage (%)
1.	Satisfaction with the calibre of the graduates	5	4	0	0	32	88.8
2.	Satisfaction that graduates are learning the right skills/courses relevant to your organisation's requirements	5	3	1	0	31	86.1
3.	Satisfaction with the speed at which course content is being adapted to meet the changing industrial needs	6	2	1	0	32	88.8
4.	Institutional Reputation	6	2	1	0	32	88.8
5.	Relevant subject or Discipline Knowledge	6	2	1	0	32	88.8
6.	Quality of Employability Skills and Attributes of our graduates	5	3	1	0	31	86.1
7.	The institution produces high quality graduates	6	3	0	0	33	91.6
8.	Successful past experience of recruiting from this institution	5	3	1	0	31	86.1
9.	Organisation and institution collaborate on joint research projects	5	3	1	0	31	86.1
10.	Ability to apply professional and / or technical knowledge in the workplace	6	3	0	0	33	91.6


Dr.G.RAMANI, M.E., Ph D ,
Professor & Head
Department of EEE
Nandha Engineering College (Autonomous)
Erode - 638 052



NANDHA ENGINEERING COLLEGE (Autonomous)

Affiliated to Anna University Chennai ✦ Approved by AICTE ✦ Accredited by NBA - New Delhi

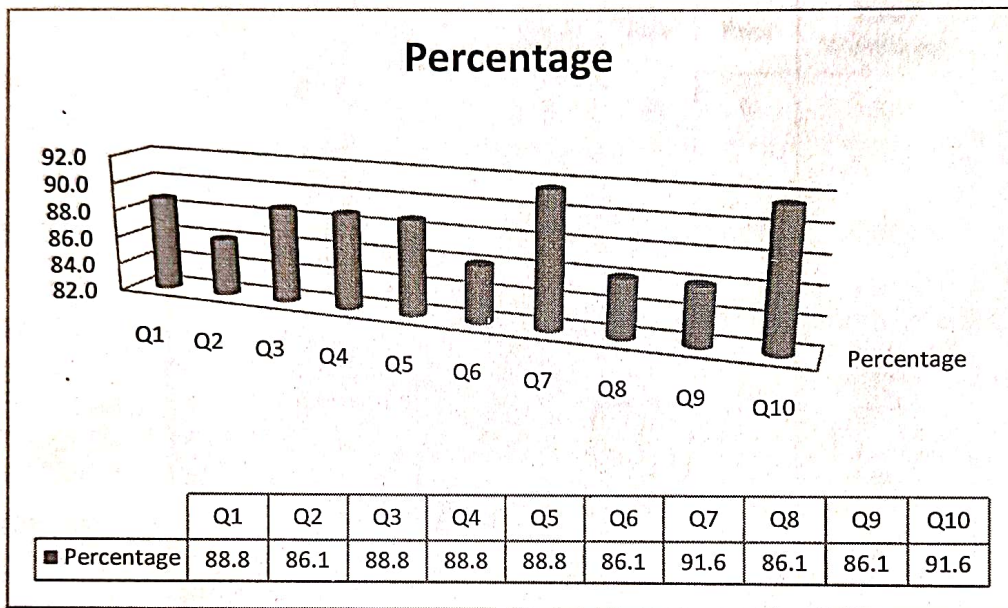
Pitchandampalayam (P.O), Valkkalmedu, Erode - Perundural Road, Erode - 638 052

Phone : 04294 - 225585, 223711, 223722, 226393 Mobile : 73737 23722 Fax : 04294 - 224787

Website : www.nandhaengg.org

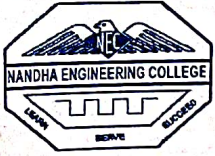
E.mail : info@nandhaengg.org

EMPLOYER FEEDBACK REPORT ON CURRICULUM AND SYLLABUS



Handwritten signature

Dr.G.RAMANI, M.E., Ph.D.,
 Professor & Head
 Department of EEE
 Nandha Engineering College (Autonomous)
 Erode - 638 052



NANDHA ENGINEERING COLLEGE (Autonomous)

Affiliated to Anna University Chennai ❖ Approved by AICTE ❖ Accredited by NBA - New Delhi

Pitchchandampalayam (P.O), Valkkalmedu, Erode - Perundurai Road, Erode - 638 052

Phone : 04294 - 225585, 223711, 223722, 226393 Mobile : 73737 23722 Fax : 04294 - 224787

Website : www.nandhaengg.org

E.mail : info@nandhaengg.org

EMPLOYER FEEDBACK REPORT

ANALYSIS AND ACTION TAKEN REPORT

Feedback from the Employers is collected to improve the teaching learning process

Analysis:

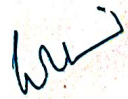
- High satisfaction rates (above 85%) indicate strong performance in most areas, particularly in the quality of graduates and their ability to apply professional/technical knowledge (91.6%).
- Employer satisfaction with the institution's reputation and course relevance reflects alignment with industrial needs.

Suggestions:

- Introduce targeted training programs focusing on soft skills, leadership, and adaptability to further strengthen graduate attributes.
- Expand joint research initiatives and improve communication with employers to address specific organizational needs.

Action Taken:

- Conducted workshops on professional skill development and industry expectations to bridge the gap in employability attributes.
- Established a dedicated Industry Collaboration Cell (ICC) to enhance partnerships and increase opportunities for joint research projects.
- Initiated regular feedback mechanisms with employers to ensure course content remains aligned with evolving industrial requirements.


Dr.G.RAMANI, M.E., Ph D ,
Professor & Head
Department of EEE
Nandha Engineering College (Autonomous)
Erode - 638 052