



# NANDHA ENGINEERING COLLEGE

(AUTONOMOUS)

(Approved by AICTE, New Delhi and Affiliated to Anna University, Chennai)

ERODE – 638052 TAMIL NADU

Email: [principal@nandhaengg.org](mailto:principal@nandhaengg.org) Mobile : 73737 12234

## DEPARTMENT OF INFORMATION TECHNOLOGY

### 1.4 FEEDBACK SYSTEM

#### STUDENTS FEEDBACK

S.No	Feedback Questions	Excellent	Good	Fair	Poor	Total Weightage	Percentage
1.	The curriculum and syllabus are well organized and easy to follow	53	124	2	1	589	81.81
2.	Is the entire syllabus covered by the faculty?	65	113	2	0	603	83.75
3.	Laboratory exercise improve my ability to understand concepts and helps to relate and apply theory to practice	68	93	14	5	584	81.11
4.	The depth of the syllabus is proportional to course outcomes	74	98	6	2	604	83.89
5.	The correct credit were allocated to the course depending on the difficulty of the course	84	85	8	3	610	84.72
6.	The syllabus provide the necessary skill set required by the industry	60	100	16	4	576	80.00
7.	The books prescribed as reference material are relevant, updated and appropriate	75	95	7	3	602	83.61
8.	The elective offered are pertinent to the specification streams and to technology	84	78	14	4	602	83.61

Head of the Department  
Dept. of Information Technology  
NANDHA ENGINEERING COLLEGE  
Erode-52.



# NANDHA ENGINEERING COLLEGE

(AUTONOMOUS)

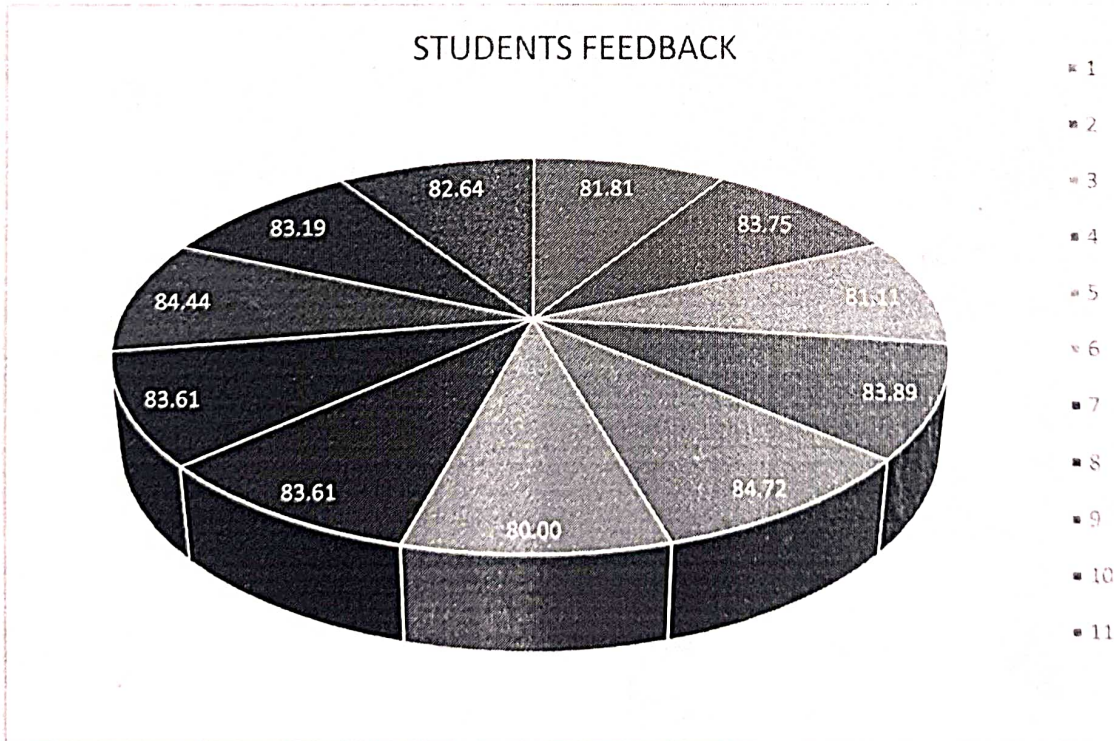
(Approved by AICTE, New Delhi and Affiliated to Anna University, Chennai)


ERODE – 638052 TAMIL NADU

Email: [principal@nandhaengg.org](mailto:principal@nandhaengg.org) Mobile : 73737 12234

	advancements						
9.	Is the syllabus career oriented?	90	73	12	5	608	84.44
10.	Is the pre-requisite course appropriate?	75	94	6	5	599	83.19
11.	Does the teacher provide examples of concepts/principles, description effectively?	67	104	6	3	595	82.64

## STUDENT FEEDBACK REPORT ON CURRICULUM AND SYLLABUS



  
 Head of the Department  
 Dept. of Information Technology  
 NANDHA ENGINEERING COLLEGE  
 Erode-52.



# NANDHA ENGINEERING COLLEGE

(AUTONOMOUS)

(Approved by AICTE, New Delhi and Affiliated to Anna University, Chennai)

ERODE – 638052 TAMIL NADU

Email: [principal@nandhaengg.org](mailto:principal@nandhaengg.org) Mobile : 73737 12234

## STUDENT FEEDBACK REPORT

### ANALYSIS AND ACTION TAKEN REPORT

Feedback from the students is collected to improve the teaching learning process

#### Analysis

- Most of the students expressed that curriculum and syllabus was well organized.
- Text books and reference books available in the library are adequate and relevant
- Include elective courses pertinent to the specification streams in curriculum

#### Suggestions

- Students suggested that a greater number of Industry related courses to be included.
- Suggested to give more exposure to be given to improve their technical and communication skill sets.

#### Action taken

- Industry related subjects like Full Stack Development, Cloud Computing, Mobile App Development are added in R22 curriculum.
- Soft analytical skills- I and Soft analytical skills-II courses are included in curriculum.
- Internship to industries is motivated to improve their technical skills.
- Value added courses are conducted to meet industrial needs.

*Reg*  
11/11/24

Head of the Department  
Dept. of Information Technology  
NANDHA ENGINEERING COLLEGE  
Erode-52



# NANDHA ENGINEERING COLLEGE

(AUTONOMOUS)

(Approved by AICTE, New Delhi and Affiliated to Anna University, Chennai)

ERODE – 638052 TAMIL NADU


Email: [principal@nandhaengg.org](mailto:principal@nandhaengg.org) Mobile : 73737 12234

## DEPARTMENT OF INFORMATION TECHNOLOGY

### 1.4 FEEDBACK SYSTEM

#### ALUMNI FEEDBACK

S.No	Feedback Questions	Excellent	Good	Fair	Poor	Total Weightage	Percentage
1.	Academic initiatives taken by the college to improve technical or industry required knowledge is	32	25	3	0	209	87.08
2.	Co-curricular initiatives taken by the college to improve the students technical/ professional skills	25	25	5	0	185	77.08
3.	Whether the choice based credit system was in tune with the existing or emerging trends of the industry	33	20	7	0	206	85.83
4.	Whether the Programme offered to you was suitably demanding the industrial needs	30	20	8	2	198	82.50
5.	Was the Syllabus prescribed for the programmes are well organized and structured?	30	25	5	0	205	85.42
6.	Content of the courses (subjects) offered under my programme was up to date and relevant	29	17	10	4	191	79.58
7.	Project work / Internships offered under my programme was challenging and constructive	40	20	0	0	220	91.67
8.	Open Elective courses offered were diverse and resourceful	30	17	9	4	193	80.42
9.	Overall learning environment offered in the campus	20	30	9	1	189	78.75

  
11/6/24  
Head of the Department  
Dept. of Information Technology  
NANDHA ENGINEERING COLLEGE  
Erode-52.



# NANDHA ENGINEERING COLLEGE

(AUTONOMOUS)

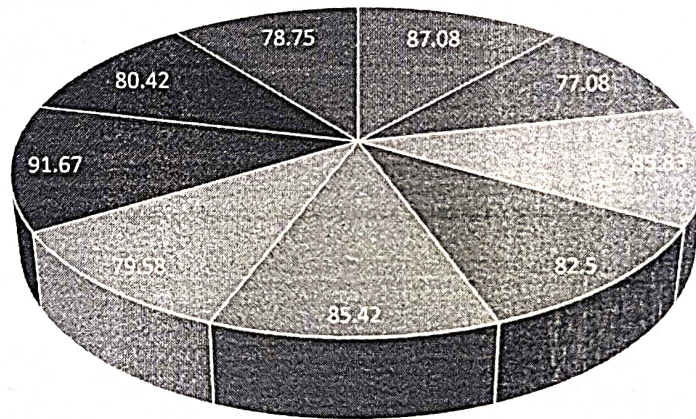
(Approved by AICTE, New Delhi and Affiliated to Anna University, Chennai)

ERODE – 638052 TAMIL NADU

Email: [principal@nandhaengg.org](mailto:principal@nandhaengg.org) Mobile : 73737 12234

## ALUMNI FEEDBACK REPORT ON CURRICULUM AND SYLLABUS

ALUMNI FEEDBACK



*[Handwritten Signature]*  
11/6/24

Head of the Department  
Dept. of Information Technology  
NANDHA ENGINEERING COLLEGE  
Erode - 52



# NANDHA ENGINEERING COLLEGE

(AUTONOMOUS)

(Approved by AICTE, New Delhi and Affiliated to Anna University, Chennai)

ERODE – 638052 TAMIL NADU

Email: [principal@nandhaengg.org](mailto:principal@nandhaengg.org) Mobile : 73737 12234

## ALUMNI FEEDBACK REPORT

### ANALYSIS AND ACTION TAKEN REPORT

Following are the Analysis and Suggestions which are given by the Alumni to our department:

#### Analysis:


- Many students gave good feedback regarding syllabus framed in new curriculum and subjects were relevant to their professional life.
- Internship to industry offered is very constructive to meet the demand of industrial needs.
- Open Elective courses offered were diverse and resourceful.

#### Suggestion:

- Skill based Training is more needed.

#### Action taken:

- Domain specific training is given by training programs organized by placement and training cell
- Industry related courses are conducted by industry experts through the value-added courses
- Industry project is encouraged for all students and they are allowed to take up internships during seventh and eighth semesters

  
11/6/24

Head of the Department  
Dept. of Information Technology  
NANDHA ENGINEERING COLLEGE  
Erode-52.



# NANDHA ENGINEERING COLLEGE

(AUTONOMOUS)

(Approved by AICTE, New Delhi and Affiliated to Anna University, Chennai)

ERODE – 638052 TAMIL NADU

Email: [principal@nandhaengg.org](mailto:principal@nandhaengg.org) Mobile : 73737 12234

## DEPARTMENT OF INFORMATION TECHNOLOGY

### 1.4 FEEDBACK SYSTEM

#### EMPLOYER FEEDBACK

S.No	Feedback Questions	Excellent	Good	Fair	Poor	Total Weightage	Percentage (%)
1	Satisfaction with the calibre of the graduates	5	6	1	0	40	83.33
2	Satisfaction that graduates are learning the right skills/courses relevant to your organisation's requirements	6	3	2	1	38	79.17
3	Satisfaction with the speed at which course content is being adapted to meet the changing industrial needs	8	2	2	0	42	87.50
4	Institutional Reputation	7	2	2	1	39	81.25
5	Relevant subject or Discipline Knowledge	6	3	2	1	38	79.17
6	Quality of Employability Skills and Attributes of our graduates	7	3	1	1	40	83.33
7	The institution produces high quality graduates	6	4	1	1	39	81.25
8	Successful past experience of recruiting from this institution	5	5	1	1	38	79.17
9	Organisation and institution collaborate on joint research projects	4	3	2	3	32	66.67
10	Ability to apply professional and / or technical knowledge in the workplace	6	3	3	0	39	81.25

  
11/6/24

Head of the Department  
Dept. of Information Technology  
NANDHA ENGINEERING COLLEGE  
Erode - 52



# NANDHA ENGINEERING COLLEGE

(AUTONOMOUS)

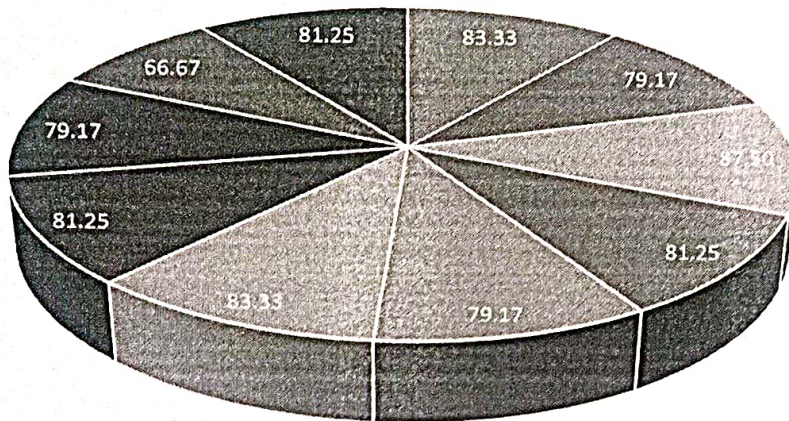
(Approved by AICTE, New Delhi and Affiliated to Anna University, Chennai)

ERODE – 638052 TAMIL NADU

Email: [principal@nandhaengg.org](mailto:principal@nandhaengg.org) Mobile : 73737 12234

## EMPLOYER FEEDBACK REPORT ON CURRICULUM AND SYLLABUS

EMPLOYER FEEDBACK



- 1
- 2
- 3
- 4
- 5
- 6
- 7
- 8
- 9
- 10

*[Handwritten Signature]*  
11/6/24

- Head of the Department  
Dept. of Information Technology  
NANDHA ENGINEERING COLLEGE  
Erode-52





# NANDHA ENGINEERING COLLEGE

(AUTONOMOUS)

(Approved by AICTE, New Delhi and Affiliated to Anna University, Chennai)

ERODE – 638052 TAMIL NADU

Email: [principal@nandhaengg.org](mailto:principal@nandhaengg.org) Mobile : 73737 12234

## EMPLOYER FEEDBACK REPORT

### ANALYSIS AND ACTION TAKEN REPORT

Feedback from the Employers is collected to improve the teaching learning process

#### Analysis

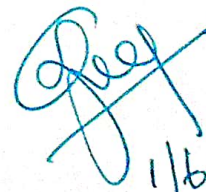
- They are satisfied with the general calibre of our graduates
- Our graduates are able to cope up in learning new things adapting to changing industry needs
- Our graduates are able to apply their Professional knowledge in their work place

#### Suggestions:

- Industry Institute collaborative research projects are needed.
- More training to be given to make them deployable.

#### Action Taken:

- Students are motivated to do industrial projects, consultancy projects and to convert their project to paper and publish in scopus indexed journals in their final year.
- Students are involved in taking up certification courses in Infosys Spring board. Wipro certification to make them industry ready.
- Value added courses like Mongo DB, User Interface prototyping tools are conducted by experts from industry.

  
1/6/24

Head of the Department  
Dept. of Information Technology  
NANDHA ENGINEERING COLLEGE  
Erode - 52



# NANDHA ENGINEERING COLLEGE

(AUTONOMOUS)

(Approved by AICTE, New Delhi and Affiliated to Anna University, Chennai)

ERODE – 638052 TAMIL NADU

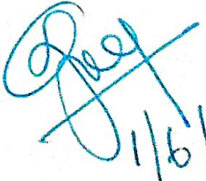
Email: [principal@nandhaengg.org](mailto:principal@nandhaengg.org) Mobile : 73737 12234

## DEPARTMENT OF INFORMATION TECHNOLOGY

### 1.4 FEEDBACK SYSTEM

#### FACULTY FEEDBACK

S.No	Feedback Questions	Excellent	Good	Fair	Poor	Total Weightage	Percentage (%)
1	Curriculum and syllabus on par with recent trends	10	3	0	0	52	92.86
2	Elucidation of course outcomes	7	6	0	0	49	87.50
3	Adequacy of Academic tasks in the course plan	5	8	0	0	47	83.93
4	Syllabus in accordance with competitive examinations	5	8	0	0	47	83.93
5	Importance and relevance of the course to industry and	6	7	0	0	48	85.71
6	Accessibility of relevant reading Materials and E-	10	3	0	0	52	92.86
7	Course equilibrium between theory and application	4	9	0	0	46	82.14
8	Privilege to propose, modify, suggest and incorporate new	11	2	0	0	53	94.64
9	Flexibility in adopting new techniques/ tools strategies in	4	7	2	0	44	78.57
10	Scope provided for research activities	5	6	2	0	45	80.36

  
11/6/24

- Head of the Department  
Dept. of Information Technology  
NANDHA ENGINEERING COLLEGE  
Erode-52.



# NANDHA ENGINEERING COLLEGE

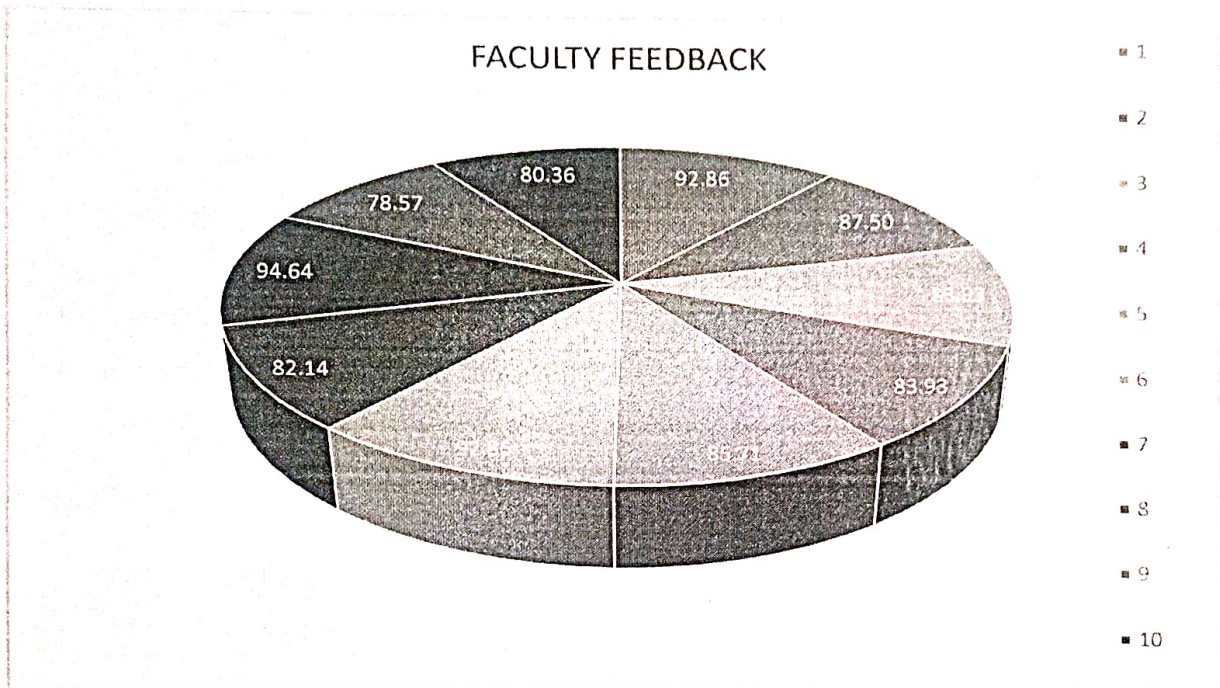
(AUTONOMOUS)

(Approved by AICTE, New Delhi and Affiliated to Anna University, Chennai)

ERODE – 638052 TAMIL NADU

Email: [principal@nandhaengg.org](mailto:principal@nandhaengg.org) Mobile : 73737 12234

## FACULTY FEEDBACK ON CURRICULAM AND SYLLABUS



*[Handwritten Signature]*  
1/6/24

Head of the Department  
Dept. of Information Technology  
NANDHA ENGINEERING COLLEGE  
Erode-52



# NANDHA ENGINEERING COLLEGE

(AUTONOMOUS)

(Approved by AICTE, New Delhi and Affiliated to Anna University, Chennai)

ERODE – 638052 TAMIL NADU

Email: [principal@nandhaengg.org](mailto:principal@nandhaengg.org) Mobile : 73737 12234

## FACULTY FEEDBACK REPORT

### ANALYSIS AND ACTION TAKEN REPORT

Following are the analysis and suggestions which are given by the Faculty members:

#### Analysis:

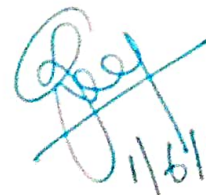
- Faculty members agreed that the Curriculum and Syllabus was on par with recent trends and it has relevance to the Industry needs.
- The course outcomes and academic tasks in the course plan were adequate.
- Learning resource materials available in the library is adequate and accessible.
- Faculty has enough freedom through the Board of Studies that has privilege to propose, modify, suggest and include new topics in the syllabus.

#### Suggestions:

- More training needed for competitive examinations
- More courses relevant to societal needs to be include in the curriculum.

#### Action taken:

- In R22 curriculum, subjects in GATE syllabus are added in curriculum.
- Subjects like Professional Ethics are added in R22 curriculum to make students socially responsible.

  
11/6/24

Head of the Department  
Dept. of Information Technology  
NANDHA ENGINEERING COLLEGE  
Erode-52.