



NANDHA ENGINEERING COLLEGE

(AUTONOMOUS)

(Approved by AICTE, New Delhi and Affiliated to Anna University, Chennai)

ERODE – 638052 TAMIL NADU

Email: principal@nandhaengg.org Mobile : 73737 12234

DEPARTMENT OF COMPUTER SCIENCE AND ENGINEERING (IoT)

1.4 FEEDBACK SYSTEM

FACULTY FEEDBACK

Sr	Feedback Questions	Excellent	Good	Fair	Poor	Total Weightage	Percentage (%)
1	Curriculum and syllabus on par with recent trends	3	1	0	0	15	93.7
2	Elucidation of course outcomes	1	3	0	0	13	81.2
3	Adequacy of Academic tasks in the course plan	2	2	0	0	14	87.5
4	Syllabus in accordance with competitive examinations	2	2	0	0	14	87.5
5	Importance and relevance of the course to industry and societal needs	1	3	0	0	13	81.2
6	Accessibility of relevant reading Materials and E-sources in the library	3	1	0	0	15	93.7
7	Course equilibrium between theory and application	2	2	0	0	14	87.5
8	Privilege to propose, modify, suggest and incorporate new topics in the syllabus through proper forum	2	2	0	0	14	87.5
9	Flexibility in adopting new techniques/ tools strategies in reaching	4	0	0	0	16	100
10	Scope provided for research activities	2	2	0	0	14	87.5



NANDHA ENGINEERING COLLEGE

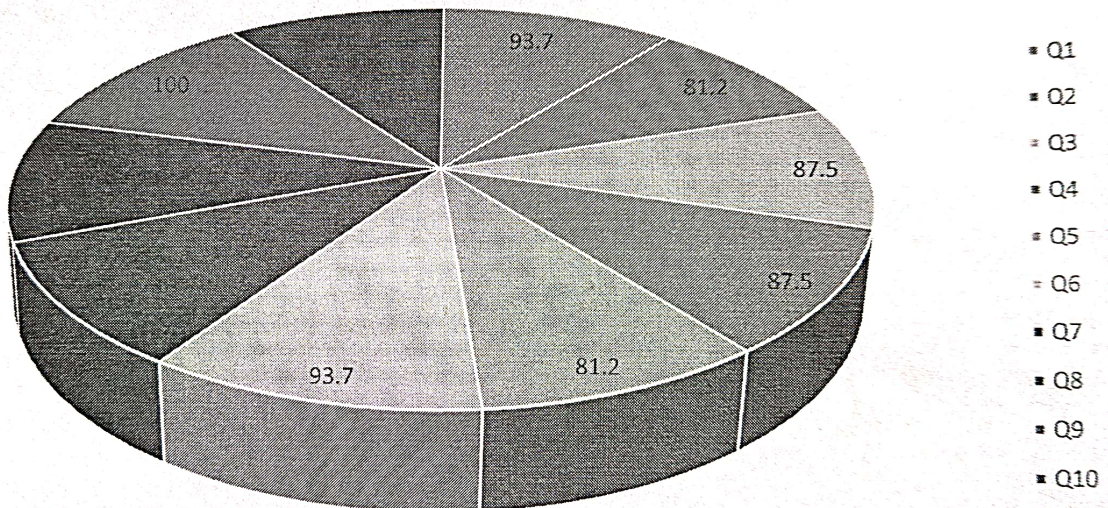
(AUTONOMOUS)

(Approved by AICTE, New Delhi and Affiliated to Anna University, Chennai)

ERODE – 638052 TAMIL NADU

Email: principal@nandhaengg.org Mobile : 73737 12234

FACULTY FEEDBACK ON CURRICULAM AND SYLLABUS





NANDHA ENGINEERING COLLEGE

(AUTONOMOUS)

(Approved by AICTE, New Delhi and Affiliated to Anna University, Chennai)

ERODE – 638052 TAMIL NADU

Email: principal@nandhaengg.org Mobile : 73737 12234

FACULTY FEEDBACK REPORT ANALYSIS AND ACTION TAKEN REPORT

Following are the analysis and suggestions which are given by the Faculty members:

Analysis:

- Faculty members concurred that the curriculum and syllabus align with current industry trends and address relevant industrial needs.
- The course outcomes and academic tasks in the course plan are appropriate and well-structured.
- Adequate and accessible learning resource materials are available in the library for students.
- Faculty members benefit from significant flexibility through the Board of Studies, which holds the authority to propose, modify, and include new topics within the syllabus.

Suggestions:

- Introduce elective courses tailored to specializations aligning with the diverse demands of the IoT industry.
- Incorporate additional courses addressing societal challenges and needs into the curriculum.

Action taken:

- In addition to adequate learning resources in the library, materials are now uploaded and made accessible through Google Classroom.
- The R22 curriculum has been planned to include elective courses, categorized by specializations to meet the needs of the IoT domain.

S. Maheshwari



NANDHA ENGINEERING COLLEGE

(AUTONOMOUS)

(Approved by AICTE, New Delhi and Affiliated to Anna University, Chennai)

ERODE – 638052 TAMIL NADU

Email: principal@nandhaengg.org Mobile : 73737 12234

1.4 FEEDBACK SYSTEM

STUDENTS FEEDBACK

S.No	Feedback Questions	Excellent	Good	Fair	Poor	Total Weightage	Percentage
1.	The curriculum and syllabus are well organized and easy to follow	65	31	6	1	366	88.83
2.	Is the entire syllabus covered by the faculty?	77	22	4	0	382	92.71
3.	Laboratory exercise improve my ability to understand concepts and helps to relate and apply theory to practice	55	41	7	0	357	86.65
4.	The depth of the syllabus is proportional to course outcomes	45	52	5	1	347	84.22
5.	The correct credit were allocated to the course depending on the difficulty of the course	81	18	4	0	386	93.68
6.	The syllabus provide the necessary skill set required by the industry	78	15	8	2	375	91.01
7.	The books prescribed as reference material are relevant, updated and appropriate	51	48	3	1	355	86.16
8.	The elective offered are pertinent to the specification streams and to technology advancements	56	41	6	0	359	87.13
9.	Is the syllabus career oriented?	71	28	2	2	374	90.77
10.	Is the pre-requisite course appropriate?	60	38	5	0	364	88.34
11.	Does the teacher provide examples of concepts/principles, description effectively?	80	14	8	1	379	91.99



NANDHA ENGINEERING COLLEGE

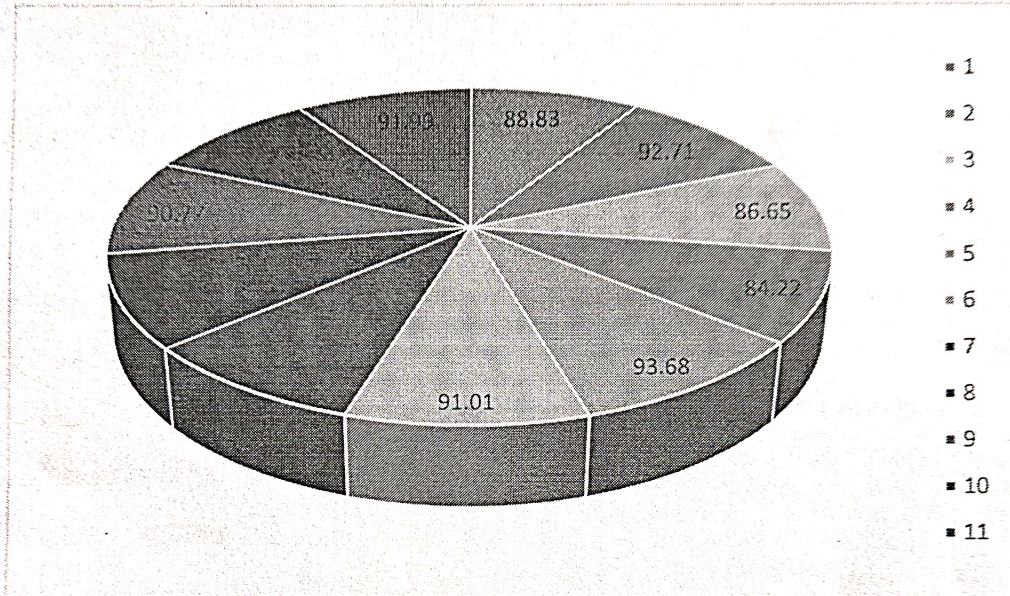
(AUTONOMOUS)

(Approved by AICTE, New Delhi and Affiliated to Anna University, Chennai)

ERODE – 638052 TAMIL NADU

Email: principal@nandhaengg.org Mobile : 73737 12234

STUDENT FEEDBACK REPORT ON CURRICULUM AND SYLLABUS





NANDHA ENGINEERING COLLEGE

(AUTONOMOUS)

(Approved by AICTE, New Delhi and Affiliated to Anna University, Chennai)

ERODE – 638052 TAMIL NADU

Email: principal@nandhaengg.org Mobile : 73737 12234

STUDENT FEEDBACK REPORT

ANALYSIS AND ACTION TAKEN REPORT

Feedback from the students is collected to improve the teaching learning process

Analysis

- The majority of students acknowledged that the curriculum and syllabus are well-structured and organized.
- Textbooks and reference materials available in the library are adequate and relevant.
- Students expressed the need for more industry-related courses to enhance their practical understanding.
- Suggestions were made to include elective courses aligned with specialization streams.

Suggestions:

- Include more practical, hands-on courses in the curriculum to bridge theoretical and practical knowledge.
- Provide greater opportunities to enhance technical and communication skill sets through structured programs and activities.

Action Taken:

- Practical-focused Laboratory courses have been introduced into the curriculum to provide in-depth practical knowledge.
- Industrial internships are actively promoted to boost students' technical expertise and real-world exposure.
- Value-added courses are planned to conduct in order to address industrial requirements and upskill students.

S. Mahalingam