



NANDHA ENGINEERING COLLEGE

(Autonomous)

Affiliated to Anna University, Chennai * Approved by AICTE * Accredited by NAAC (A+ Grade)

Pitchandampalayam (P.O), Vaikkalmedu, Erode - Perundurai Main Road, Erode - 638 052

Phone: 04294 - 225585, 223711, 223722, 226393 Mobile: 73737 23722 Fax: 04294 - 224787

Website: www.nandhaengg.org


E-mail: info@nandhaengg.org

DEPARTMENT OF CHEMICAL ENGINEERING

1.4 FEEDBACK SYSTEM

EMPLOYER FEEDBACK

S.No.	Feedback Questions	Excellent	Good	Fair	Poor	Total Weightage	Percentage
1.	Satisfaction with the caliber of the graduates	5	4	2	1	37	77.1
2.	Satisfaction that graduates are learning the right skills/courses relevant to your organisation's requirements	6	4	2	0	40	83.3
3.	Satisfaction with the speed at which course content is being adapted to meet the changing industrial needs	7	3	2	0	41	85.4
4.	Institutional Reputation	6	3	3	0	39	81.3
5.	Relevant subject or Discipline knowledge	6	3	2	1	38	79.2
6.	Quality of Employability Skills and Attributes of our graduates	6	4	1	1	39	81.3
7.	The institution produces high quality graduates	6	3	2	1	38	79.2
8.	Successful past experience of recruiting from this institution	7	3	1	1	40	83.3
9.	Organisation and institution collaborate on joint research projects	5	3	2	2	35	72.9
10.	Ability to apply professional and / or technical knowledge in the workplace	5	3	3	1	36	75.0


H.O.D. Chemical Engineering
Nandha Engineering College,
(Autonomous)
Erode - 638 052.



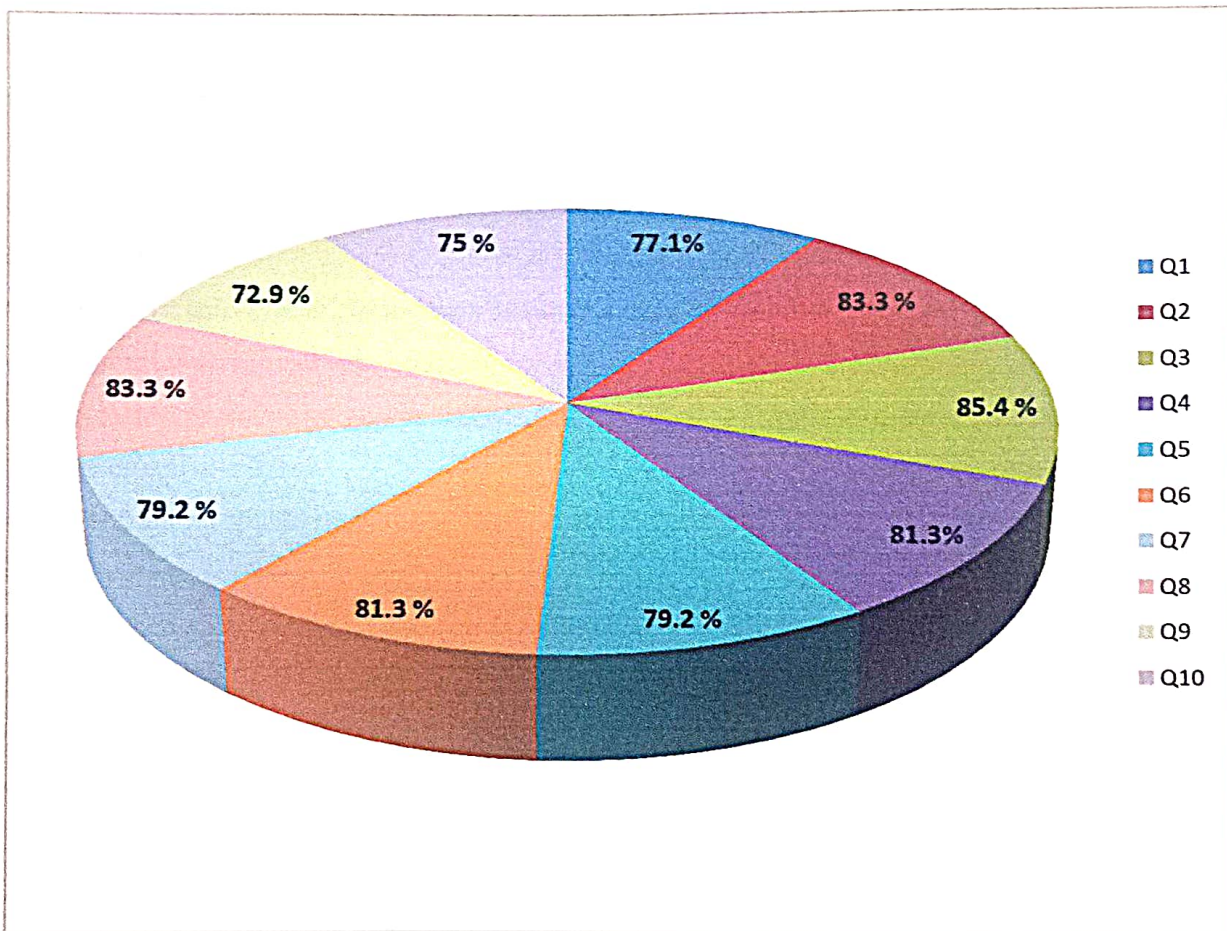
NANDHA ENGINEERING COLLEGE (Autonomous)

Affiliated to Anna University, Chennai * Approved by AICTE * Accredited by NAAC (A+ Grade)
Pitchandampalayam (P.O), Vaikkalmedu, Erode - Perundurai Main Road, Erode - 638 052
Phone: 04294 - 225585, 223711, 223722, 226393 Mobile: 73737 23722 Fax: 04294 - 224787

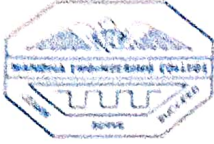
Website: www.nandhaengg.org

E-mail: info@nandhaengg.org

EMPLOYER FEEDBACK REPORT ON CURRICULAM AND SYLLABUS



H.O.D. Chemical Engineering
Nandha Engineering College,
(Autonomous)
Erode - 638 052.



NANDHA ENGINEERING COLLEGE

(Autonomous)

Affiliated to Anna University, Chennai * Approved by AICTE * Accredited by NAAC (A+ Grade)

Pitchandampalayam (P.O), Vaikkalmedu, Erode - Perundurai Main Road, Erode - 638 052

Phone: 04294 - 225585, 223711, 223722, 226393 Mobile: 73737 23722 Fax: 04294 - 224787

Website: ww.nandhaengg.org

E-mail: info@nandhaengg.org

EMPLOYER FEEDBACK REPORT ANALYSIS AND ACTION TAKEN REPORT

Feedback from the Employers were collected, analyzed and incorporated in the curriculum to improve the teaching learning process of Chemical Engineering.

Analysis:

- Employers are satisfied with the competence of our chemical engineering graduates.
- Companies believe that our Institutional reputation is excellent.
- Quality of employability skills and attributes of our graduates are good.

Suggestions:

- Interactive activities at the Industry Institute can be enhanced.
- Projects involving industry collaborations can be planned.
- Graduates' professional and/or technical skills which are applied in the workplace should be exposed in very effective manner.
- More training should be given to improve the technical skill sets of the graduates.

Action taken:

- Introduced value-added courses on Simulation and Optimization of Cross Country Pipeline.
- Industrial Training / Internship for students 6th Semester students for duration of 2 weeks is made mandatory.
- R22 curriculum structures with increased elective options aligned with current industry trends are incorporated.

H.O.D. Chemical Engineering,
Nandha Engineering College,
(Autonomous)
Erode - 638 052.



NANDHA ENGINEERING COLLEGE

(Autonomous)

Affiliated to Anna University, Chennai * Approved by AICTE * Accredited by NAAC (A+ Grade)

Pitchandampalayam (P.O), Vaikkalmedu, Erode - Perundurai Main Road, Erode - 638 052

Phone: 04294 - 225585, 223711, 223722, 226393 Mobile: 73737 23722 Fax: 04294 - 224787

Website: ww.nandhaengg.org

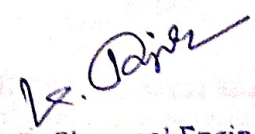
E-mail: info@nandhaengg.org

DEPARTMENT OF CHEMICAL ENGINEERING

1.4 FEEDBACK SYSTEM

STUDENTS FEEDBACK

S.No.	Feedback Questions	Excellent	Good	Fair	Poor	Total Weightage	Percentage
1.	The curriculum and syllabus are well organized and easy to follow	33	95	2	2	423	80.1
2.	Is the entire syllabus covered by the faculty?	45	84	2	1	437	82.8
3.	Laboratory exercise improve my ability to understand concepts and helps to relate and apply theory to practice	52	63	12	5	426	80.7
4.	The depth of the syllabus is proportional to course outcomes	55	68	7	2	440	83.3
5.	The correct credit were allocated to the course depending on the difficulty of the course	67	54	8	3	449	85.0
6.	The syllabus provide the necessary skill set required by the industry	46	67	15	4	419	79.4
7.	The books prescribed as reference material are relevant, updated and appropriate	53	67	9	3	434	82.2
8.	The elective offered are pertinent to the specification streams and to technology advancements	65	49	14	4	439	83.1
9.	Is the syllabus career oriented?	72	42	13	5	445	84.3
10.	Is the pre-requisite course appropriate?	65	61	3	3	452	85.6
11.	Does the teacher provide examples of concepts/ principles, description effectively?	59	65	5	3	444	84.1


H.O.D. Chemical Engineering
Nandha Engineering College,
(Autonomous)
Erode - 638 052.



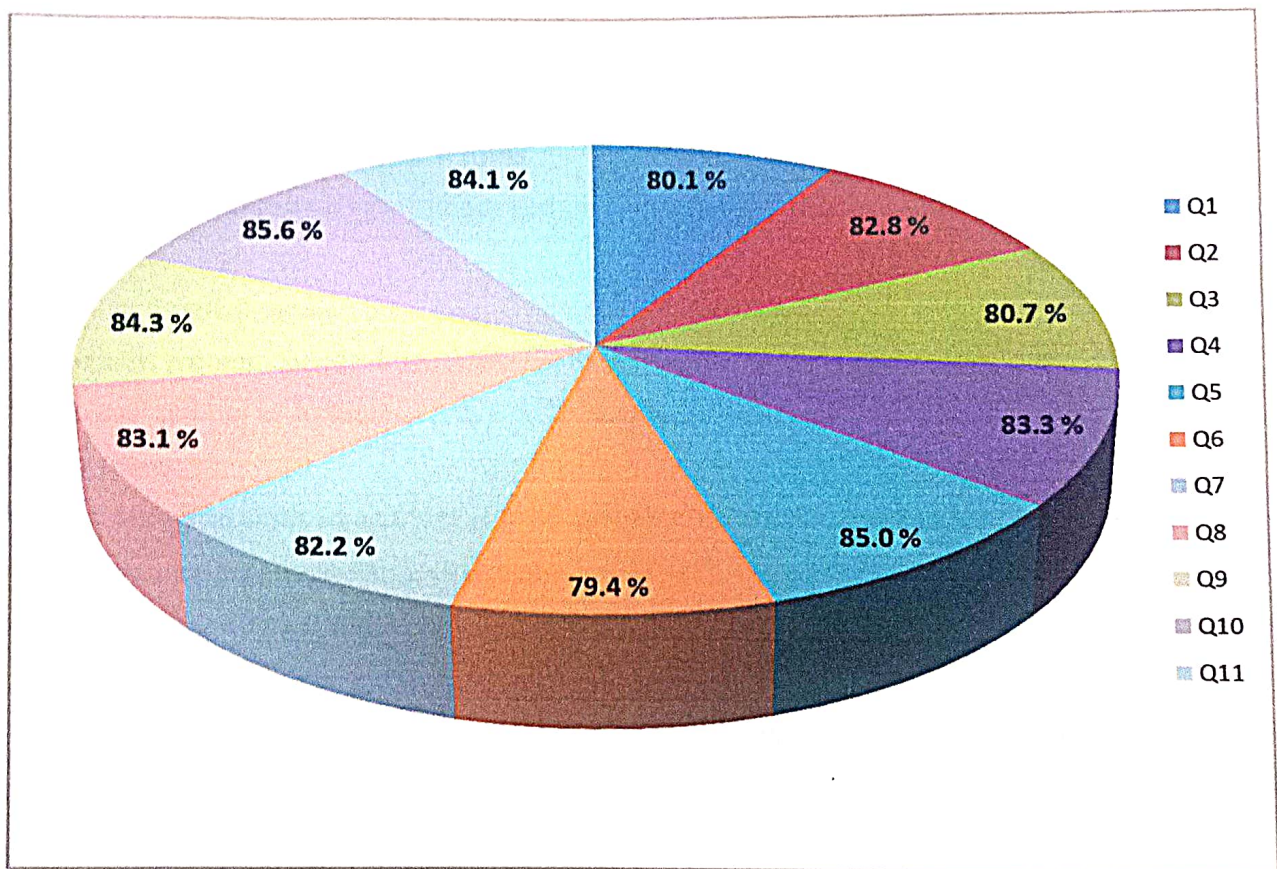
NANDHA ENGINEERING COLLEGE (Autonomous)

Affiliated to Anna University, Chennai * Approved by AICTE * Accredited by NAAC (A+ Grade)
Pitchandampalayam (P.O), Vaikkalmedu, Erode - Perundurai Main Road, Erode - 638 052
Phone: 04294 - 225585, 223711, 223722, 226393 Mobile: 73737 23722 Fax: 04294 - 224787

Website: www.nandhaengg.org

E-mail: info@nandhaengg.org

STUDENTS FEEDBACK REPORT ON CURRICULAM AND SYLLABUS



H.O.D. Chemical Engineering
Nandha Engineering College,
(Autonomous)
Erode - 638 052.



NANDHA ENGINEERING COLLEGE (Autonomous)

Affiliated to Anna University, Chennai * Approved by AICTE * Accredited by NAAC (A+ Grade)
Pitchandampalayam (P.O), Vaikkalmedu, Erode - Perundurai Main Road, Erode - 638 052
Phone: 04294 - 225585, 223711, 223722, 226393 Mobile: 73737 23722 Fax: 04294 - 224787

Website: www.nandhaengg.org

E-mail: info@nandhaengg.org

STUDENTS FEEDBACK REPORT ANALYSIS AND ACTION TAKEN REPORT

Feedback from the students was collected and analysed to improve the teaching learning process effectively. Suggestions which are given by the students of Chemical Engineering are considered and actions taken are reported below.

Analysis


- The majority of students expressed that the curriculum and syllabus were well-organized.
- Students said that the laboratory exercise helped them relate and apply theory to practice, as well as enhance their comprehension of ideas
- The library's collection of reference and textbook materials is sufficient and pertinent.

Suggestions

- Design oriented modern tools related courses to be included
- Students recommended adding more hands-on courses to the curriculum.
- Intense training in Aptitude, Verbal & Logical Reasoning and Core should be provided.

Action taken

- Soft analytical skills - I and Soft analytical skills - II courses are included in curriculum.
- Students are encouraged to attend atleast one NPTEL courses per semester.
- Industrial Training / Internship for students 6th Semester students for duration of 2 weeks is made mandatory.
- Introduced value-added courses on Simulation and Optimization of Cross Country Pipeline for III and IV year students.


H.O.D. Chemical Engineering
Nandha Engineering College,
(Autonomous)
Erode - 638 052.



NANDHA ENGINEERING COLLEGE

(Autonomous)

Affiliated to Anna University, Chennai * Approved by AICTE * Accredited by NAAC (A+ Grade)
Pitchandampalayam (P.O), Vaikkalmedu, Erode - Perundurai Main Road, Erode - 638 052
Phone: 04294 - 225585, 223711, 223722, 226393 Mobile: 73737 23722 Fax: 04294 - 224787

Website: www.nandhaengg.org


E-mail: info@nandhaengg.org

DEPARTMENT OF CHEMICAL ENGINEERING

1.4 FEEDBACK SYSTEM

FACULTY FEEDBACK

S.No.	Feedback Questions	Excellent	Good	Fair	Poor	Total Weightage	Percentage
1.	Curriculum and syllabus on par with recent trends	8	4	0	0	44	91.7
2.	Elucidation of course outcomes	8	4	0	0	44	91.7
3.	Adequacy of Academic tasks in the course plan	9	2	1	0	44	91.7
4.	Syllabus in accordance with competitive examinations	7	5	0	0	43	89.6
5.	Importance and relevance of the course to industry and societal needs	5	6	1	0	40	83.3
6.	Accessibility of relevant reading materials and E-sources in the library	7	4	1	0	42	87.5
7.	Course equilibrium between theory and application	5	7	0	0	41	85.4
8.	Privilege to propose, modify, suggest and incorporate new topics in the syllabus through proper forum	11	1	0	0	47	97.9
9.	Flexibility in adopting new techniques/ tools strategies in reaching	11	1	0	0	47	97.9
10.	Scope provided for research activities	4	5	3		37	77.1


H.O.D, Chemical Engineering
Nandha Engineering College,
(Autonomous)
Erode - 638 052.



NANDHA ENGINEERING COLLEGE (Autonomous)

Affiliated to Anna University, Chennai * Approved by AICTE * Accredited by NAAC (A+ Grade)

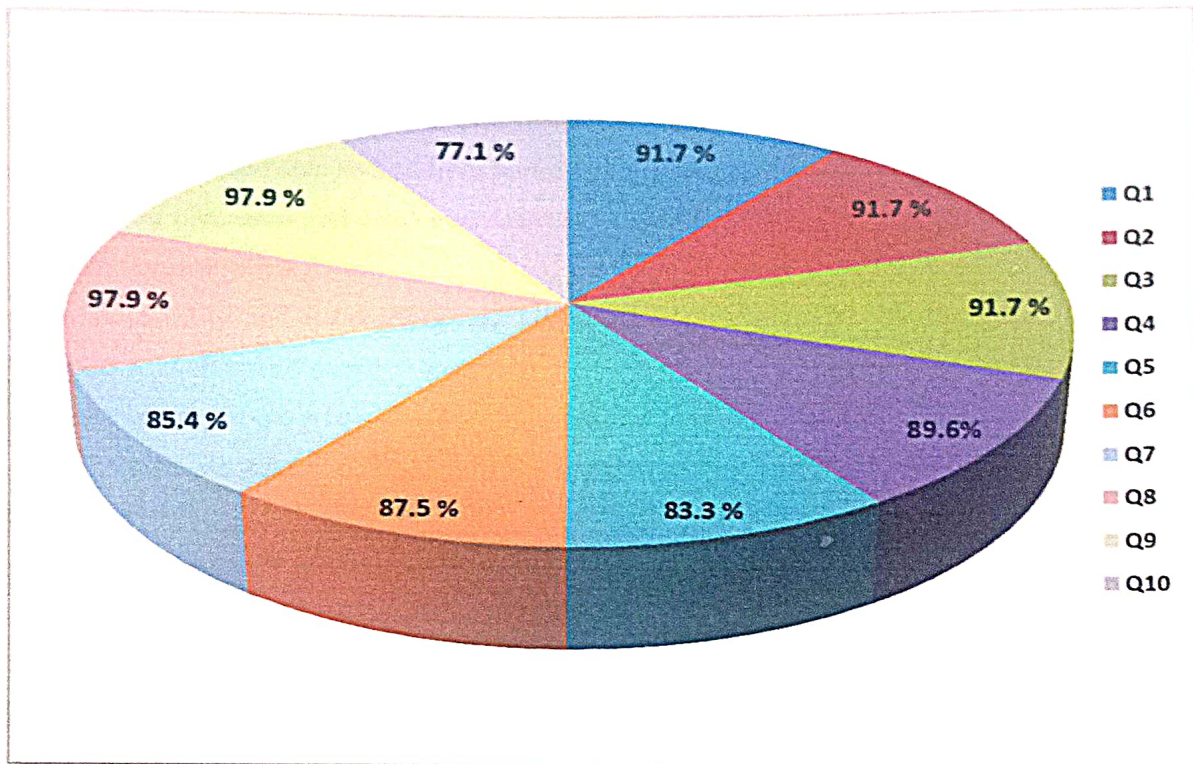
Pitchandampalayam (P.O), Vaikkalmedu, Erode - Perundurai Main Road, Erode - 638 052

Phone: 04294 - 225585, 223711, 223722, 226393 Mobile: 73737 23722 Fax: 04294 - 224787

Website: www.nandhaengg.org

E-mail: info@nandhaengg.org

FACULTY FEEDBACK REPORT ON CURRICULAM AND SYLLABUS



K. Davis
H.O.D. Chemical Engineering
Nandha Engineering College,
(Autonomous)
Erode - 638 052.



NANDHA ENGINEERING COLLEGE

(Autonomous)

Affiliated to Anna University, Chennai * Approved by AICTE * Accredited by NAAC (A+ Grade)
Pitchandampalayam (P.O), Vaikkalmedu, Erode - Perundurai Main Road, Erode - 638 052
Phone: 04294 - 225585, 223711, 223722, 226393 Mobile: 73737 23722 Fax: 04294 - 224787

Website: www.nandhaengg.org

E-mail: info@nandhaengg.org

FACULTY FEEDBACK REPORT ANALYSIS AND ACTION TAKEN REPORT

Following are the analysis and suggestions which are given by the Faculty members of Chemical Engineering:

Analysis:

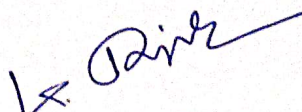
- Faculty members concurred that the curriculum and syllabus are well-aligned with contemporary industrial advancements and address sector-specific requirements
- The course outcomes and academic deliverables outlined in the course plan are comprehensive and effectively structured.
- The availability and accessibility of learning resource materials in the library are sufficient to support academic and research endeavors.
- Faculty members are empowered with significant autonomy through the Board of Studies, enabling them to propose, revise, recommend, and integrate new topics into the syllabus.

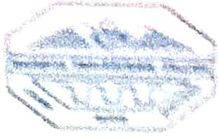
Suggestions:

- Strengthen industry-academia collaboration to bridge knowledge gaps for students and faculty through internships, training, and expert sessions.
- Duration of Industrial Training / Internship for students can be increased.
- Integrate elective courses addressing current industrial demands and introduce value-added programs focused on Industrial Sensors and other emerging technologies.
- Equip students with hands-on skills through Reskilling/Up-skilling programs, pilot-scale equipment fabrication training, and exposure to design-oriented modern tools.

Action taken:

- R22 curriculum structure with increased elective options aligned with current industry trends are incorporated
- Industrial Training / Internship for students 6th Semester students for duration of 2 weeks is made mandatory.
- Introduced value-added courses on Simulation and Optimization of Cross Country Pipeline.


H.O.D. Chemical Engineering
Nandha Engineering College,
(Autonomous)
Erode - 638 052.



NANDHA ENGINEERING COLLEGE (Autonomous)

Affiliated to Anna University, Chennai * Approved by AICTE * Accredited by NAAC (A+ Grade)
Pichandampalayam (P. O), Vaikkalmedu, Erode - Perundurai Main Road, Erode - 638 052
Phone: 04294 - 225585, 223711, 223722, 226393 Mobile: 73737 23722 Fax: 04294 - 224787

Website: www.nandhaengg.org

E-mail: info@nandhaengg.org

DEPARTMENT OF CHEMICAL ENGINEERING

1.4 FEEDBACK SYSTEM

ALUMNI FEEDBACK

S.No.	Feedback Questions	Excellent	Good	Fair	Poor	Total Weightage	Percentage
1.	Academic initiatives taken by the college to improve technical or industry required knowledge is sufficient.	28	19	15	0	199	80.2
2.	Co-curricular initiatives taken by the college to improve the students technical professional skills	32	18	12	0	206	83.1
3.	Whether the Choice Based Credit System was in tune with the existing or emerging trends of the industry?	30	21	9	2	203	81.9
4.	Whether the Programme offered to you was suitably demanding the industrial need?	26	18	9	9	185	74.6
5.	Was the Syllabus prescribed for the programme is well organized and structured?	39	17	5	1	218	87.9
6.	Content of the courses (subjects) offered under Chemical Engineering programme was up to date and relevant.	33	15	8	6	199	80.2
7.	Project work / Internships offered under Chemical Engineering programme were challenging and constructive.	31	21	10	0	207	83.5
8.	Open Elective courses offered were diverse and resourceful.	30	24	7	1	207	83.5
9.	Overall learning environment offered in the campus	26	28	5	3	201	81.0

K. Raju
H.O.D. Chemical Engineering
Nandha Engineering College,
(Autonomous)
Erode - 638 052.



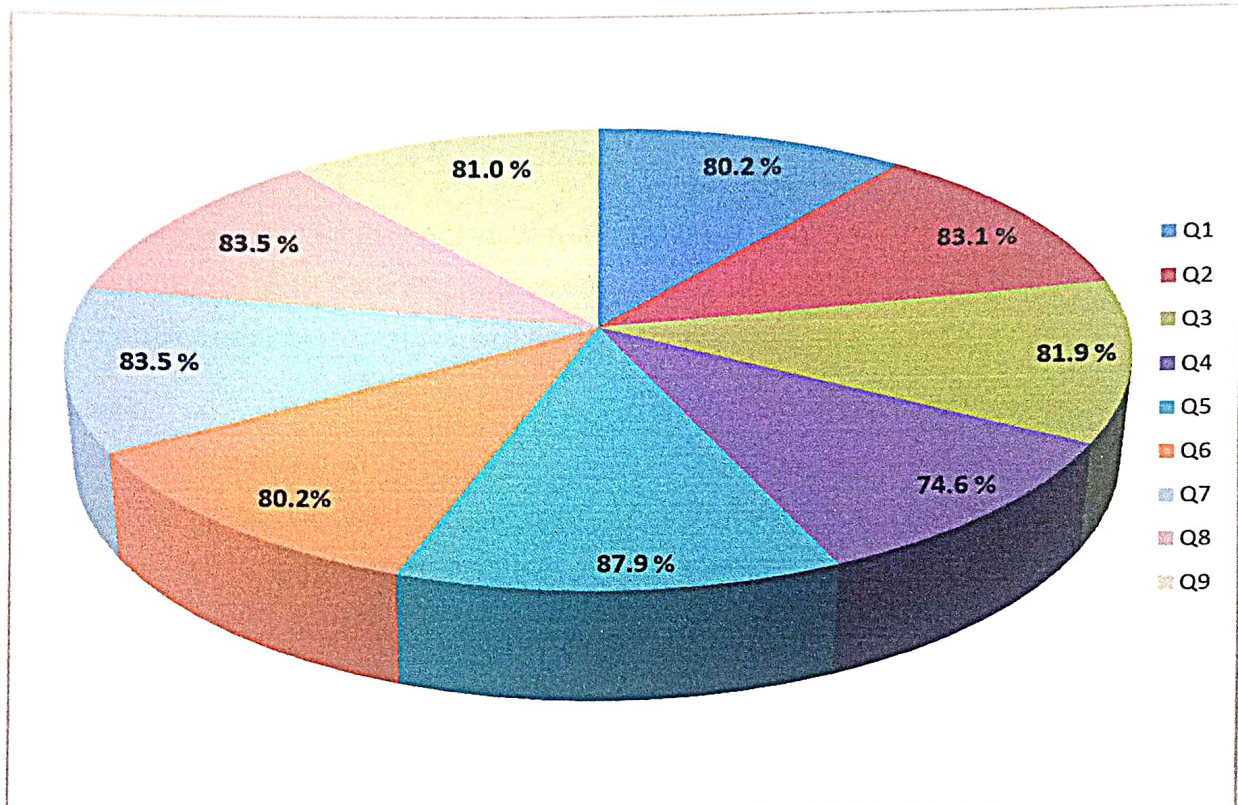
NANDHA ENGINEERING COLLEGE (Autonomous)

Affiliated to Anna University, Chennai * Approved by AICTE * Accredited by NAAC (A+ Grade)
Pitchandampalayam (P.O), Valkkalmedu, Erode - Perundurai Main Road, Erode - 638 052
Phone: 04294 - 225585, 223711, 223722, 226393 Mobile: 73737 23722 Fax: 04294 - 224787

Website: www.nandhaengg.org

E-mail: info@nandhaengg.org

ALUMNI FEEDBACK REPORT ON CURRICULAM AND SYLLABUS



V. Dair

H.O.D. Chemical Engineering
Nandha Engineering College,
(Autonomous)
Erode - 638 052.



NANDHA ENGINEERING COLLEGE (Autonomous)

Affiliated to Anna University, Chennai * Approved by AICTE * Accredited by NAAC (A+ Grade)
Pitchandampalayam (P.O), Vaikkalmedu, Erode - Perundurai Main Road, Erode - 638 052
Phone: 04294 - 225585, 223711, 223722, 226393 Mobile: 73737 23722 Fax: 04294 - 224787

Website: www.nandhaengg.org

E-mail: info@nandhaengg.org

ALUMNI FEEDBACK REPORT ANALYSIS AND ACTION TAKEN REPORT

The alumni's comments were gathered. The examination of the alumni's feedback, their recommendations for the Chemical Engineering curriculum and syllabus, and the actions taken in response to those recommendations are displayed here.

Analysis:

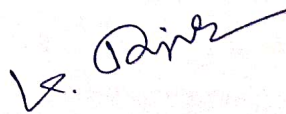
- The syllabus prescribed for the program is well organized and structured.
- Internships offered under Chemical Engineering programme were challenging and constructive.
- Courses offered as open electives were diverse and resourceful.

Suggestions:

- Further education on topics relevant to the industry can be offered.
- Few courses can be conducted with the assistance of professionals from the industry.
- Alumni Mentoring in addition to faculty members to currently pursuing students can be implemented.
- In addition to faculty members, alumni mentoring can be introduced for students who are currently enrolled.

Action taken:

- Courses related to the industry are taught by professionals with expertise in the field through value-added programs.
- All students are encouraged to engage in industry projects and have the opportunity to pursue internships during their seventh and eighth semesters.


H.O.D. Chemical Engineering
Nandha Engineering College,
(Autonomous)
Erode - 638 052