



NANDHA ENGINEERING COLLEGE

(AUTONOMOUS)

(Approved by AICTE, New Delhi and Affiliated to Anna University, Chennai)

ERODE – 638052 TAMIL NADU

Email: principal@nandhaengg.org Mobile: 73737 12234

DEPARTMENT OF CIVIL ENGINEERING

1.4 FEEDBACK SYSTEM

STUDENTS FEEDBACK

S.No	Feedback Questions	Excellent	Good	Fair	Poor	Total Weightage	Percentage
1.	The curriculum and syllabus are well organized and easy to follow	72	12	6	0	336	93.33
2.	Is the entire syllabus covered by the faculty?	74	11	5	0	339	94.17
3.	Laboratory exercise improve my ability to understand concepts and helps to relate and apply theory to practice	68	16	4	2	330	91.67
4.	The depth of the syllabus is proportional to course outcomes	65	20	3	2	328	91.11
5.	The correct credit were allocated to the course depending on the difficulty of the course	70	12	5	3	329	91.39
6.	The syllabus provide the necessary skill set required by the industry	65	19	4	2	327	90.83
7.	The books prescribed as reference material are relevant, updated and appropriate	38	45	5	2	299	83.06
8.	The elective offered are pertinent to the specification streams and to technology advancements	68	18	2	2	332	92.22



NANDHA ENGINEERING COLLEGE

(AUTONOMOUS)

(Approved by AICTE, New Delhi and Affiliated to Anna University, Chennai)

ERODE – 638052 TAMIL NADU

Email: principal@nandhaengg.org Mobile: 73737 12234

9.	Is the syllabus career oriented?	70	12	4	4	328	91.11
10.	Is the pre-requisite course appropriate?	52	31	6	1	314	87.22
11.	Does the teacher provide examples of concepts/principles, description effectively?	72	10	6	2	332	92.22


Dr. E.K. MOHANRAJ, PhD
HOD-Civil Engineering
Nandha Engineering College
(Autonomous)
ERODE-638 052 TAMIL NADU



NANDHA ENGINEERING COLLEGE

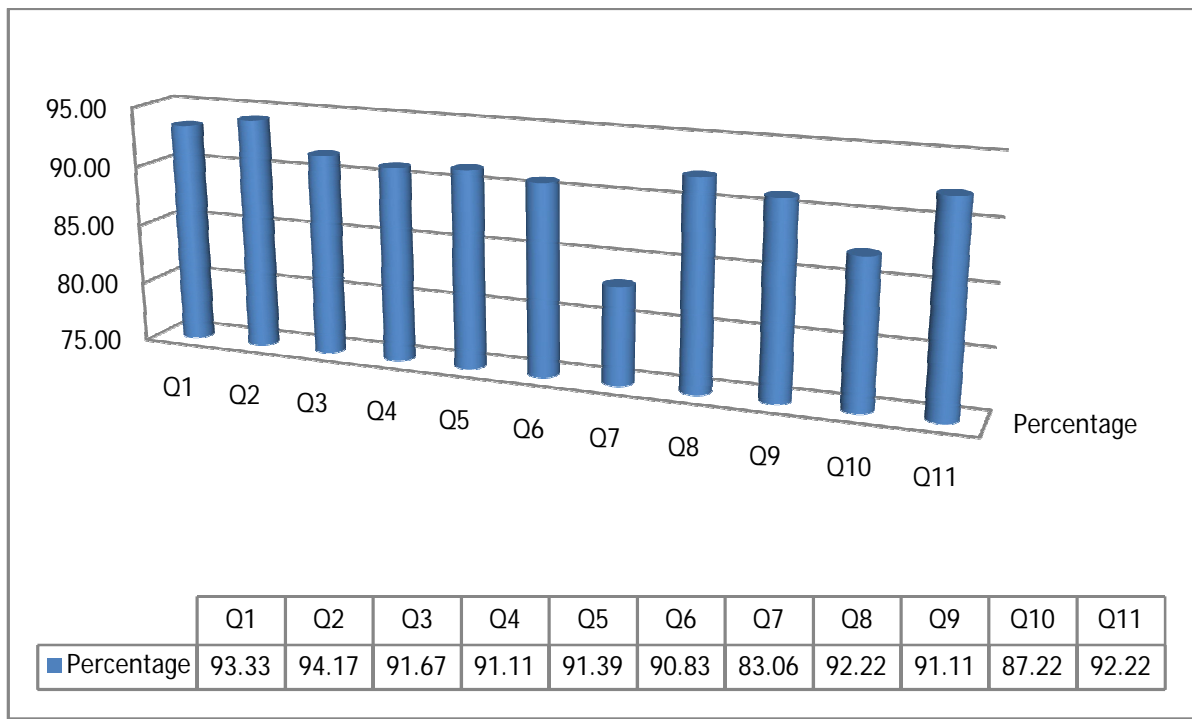
(AUTONOMOUS)

(Approved by AICTE, New Delhi and Affiliated to Anna University, Chennai)

ERODE – 638052 TAMIL NADU

Email: principal@nandhaengg.org Mobile: 73737 12234

STUDENT FEEDBACK REPORT ON CURRICULUM AND SYLLABUS




Dr. E.K. MOHANRAJ, PhD
HOD-Civil Engineering
Nandha Engineering College
(Autonomous)
ERODE-638 052 TAMIL NADU



NANDHA ENGINEERING COLLEGE

(AUTONOMOUS)

(Approved by AICTE, New Delhi and Affiliated to Anna University, Chennai)

ERODE – 638052 TAMIL NADU

Email: principal@nandhaengg.org Mobile: 73737 12234

ANALYSIS AND ACTION TAKEN REPORT

Feedback from the students is collected to improve the teaching learning process

Analysis

- Most of the students expressed that curriculum and syllabus was well organized.
- Text books and reference books available in the library are adequate and relevant
- Integrate elective courses aligned with the specialized streams into the curriculum.

Suggestions

- Students suggested to include more electives courses in curriculum
- Suggested to increase the number of field visits or industrial visits.
- To add more activities to improve technical skills.

Action taken

- Additional elective courses have been incorporated into the curriculum to provide students with more options for specialization.
- Internship is included in curriculum as a mandatory to improve their technical skills.
- Value added courses are conducted to meet industrial needs.


Dr. E.K. MOHANRAJ, PhD
HOD-Civil Engineering
Nandha Engineering College
(Autonomous)
ERODE-638 052 TAMIL NADU



NANDHA ENGINEERING COLLEGE

(AUTONOMOUS)

(Approved by AICTE, New Delhi and Affiliated to Anna University, Chennai)

ERODE – 638052 TAMIL NADU

Email: principal@nandhaengg.org Mobile: 73737 12234

DEPARTMENT OF CIVIL ENGINEERING

ALUMNI FEEDBACK

S.No	Feedback Questions	Excellent	Good	Fair	Poor	Total Weightage	Percentage
1.	Academic initiatives taken by the college to improve technical or industry required knowledge is sufficient	35	13	0	0	179	93.23
2.	Co-curricular initiatives taken by the college to improve the students technical/professional skills	35	7	5	1	172	89.58
3.	Whether the choice based credit system was in tune with the existing or emerging trends of the industry	34	10	2	2	172	89.58
4.	Whether the Programme offered to you was suitably demanding the industrial needs	30	12	4	2	166	86.46
5.	Was the syllabus prescribed for the programmes are well organized and structured?	29	15	3	1	168	87.50
6.	Content of the courses (subjects) offered under my programme was up to date and relevant	28	17	2	1	168	87.50
7.	Project work / Internships offered under my programme was challenging and constructive	30	18	0	0	174	90.63
8.	Open Elective courses offered were diverse and resourceful	25	27	4	2	191	99.48
9.	Overall learning environment offered in the campus	15	27	5	1	152	79.17

Dr. E.K. MOHANRAJ, PhD
HOD-Civil Engineering
Nandha Engineering College
(Autonomous)
ERODE-638 052 TAMIL NADU



NANDHA ENGINEERING COLLEGE

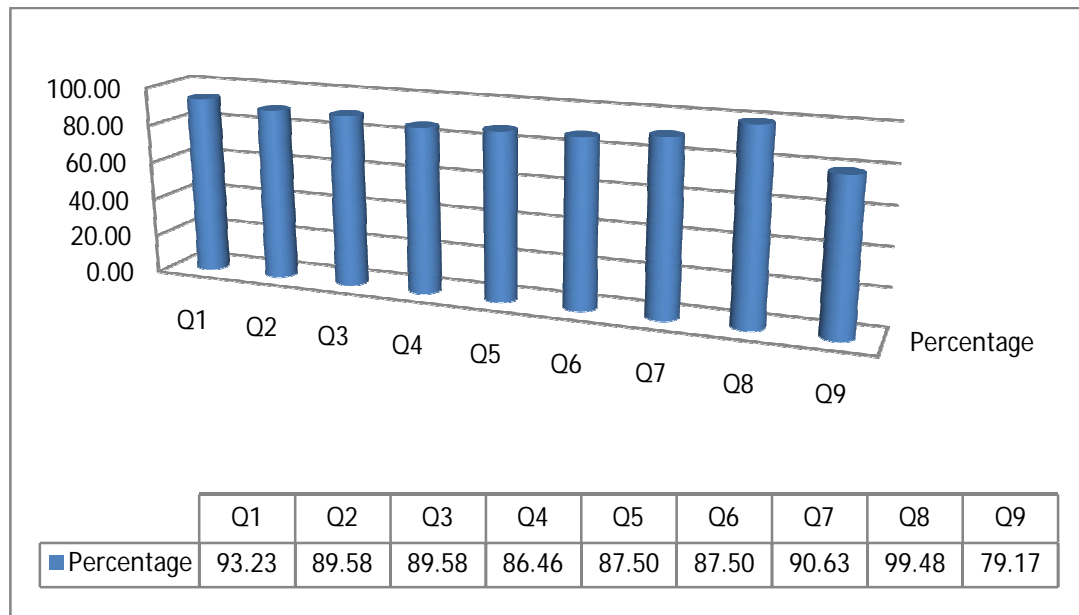
(AUTONOMOUS)

(Approved by AICTE, New Delhi and Affiliated to Anna University, Chennai)

ERODE – 638052 TAMIL NADU

Email: principal@nandhaengg.org Mobile: 73737 12234

ALUMNI FEEDBACK REPORT ON CURRICULUM AND SYLLABUS



Dr. E.K.MOHANRAJ, PhD
HOD-Civil Engineering
Nandha Engineering College
(Autonomous)
ERODE-638 052 TAMIL NADU



NANDHA ENGINEERING COLLEGE

(AUTONOMOUS)

(Approved by AICTE, New Delhi and Affiliated to Anna University, Chennai)

ERODE – 638052 TAMIL NADU

Email: principal@nandhaengg.org Mobile: 73737 12234

ANALYSIS AND ACTION TAKEN REPORT

Following are the analysis and suggestions which are given by the Alumni to our department:

Analysis:

- Many students were appreciative of the syllabus prescribed for the programme and feel it was well organized and structured.
- Advanced software tools have been incorporated into the curriculum to enhance learning and practical skills.

Suggestion:

- Efforts should be made to strengthen the relationship between students and the industry.

Action taken:

- Industry related courses are conducted by industry experts through the value added courses.
- Industry project is encouraged for all students and they are allowed to take up internships during seventh and eighth semesters.


Dr. E.K. MOHANRAJ, PhD
HOD-Civil Engineering
Nandha Engineering College
(Autonomous)
ERODE-638 052 TAMIL NADU



NANDHA ENGINEERING COLLEGE

(AUTONOMOUS)

(Approved by AICTE, New Delhi and Affiliated to Anna University, Chennai)

ERODE – 638052 TAMIL NADU

Email: principal@nandhaengg.org Mobile: 73737 12234

DEPARTMENT OF CIVIL ENGINEERING

EMPLOYER FEEDBACK

S.No	Feedback Questions	Excellent	Good	Fair	Poor	Total Weightage	Percentage (%)
1.	Satisfaction with the calibre of the graduates	5	3	1	0	31	86.11
2.	Satisfaction that graduates are learning the right skills/courses relevant to your organisation's requirements	5	4	0	0	32	88.89
3.	Satisfaction with the speed at which course content is being adapted to meet the changing industrial needs	6	2	1	0	32	88.89
4.	Institutional Reputation	8	1	0	0	35	97.22
5.	Relevant subject or Discipline Knowledge	5	2	1	1	29	80.56
6.	Quality of Employability Skills and Attributes of our graduates	7	1	1	0	33	91.67
7.	The institution produces high quality graduates	6	2	0	1	31	86.11
8.	Successful past experience of recruiting from this institution	6	2	1	0	32	88.89
9.	Organisation and institution collaborate on joint research projects	6	3	0	0	33	91.67
10.	Ability to apply professional and / or technical knowledge in the workplace	5	3	1	0	31	86.11


Dr. E.K. MOHANRAJ, PhD
HOD-Civil Engineering
Nandha Engineering College
(Autonomous)
ERODE-638 052 TAMIL NADU



NANDHA ENGINEERING COLLEGE

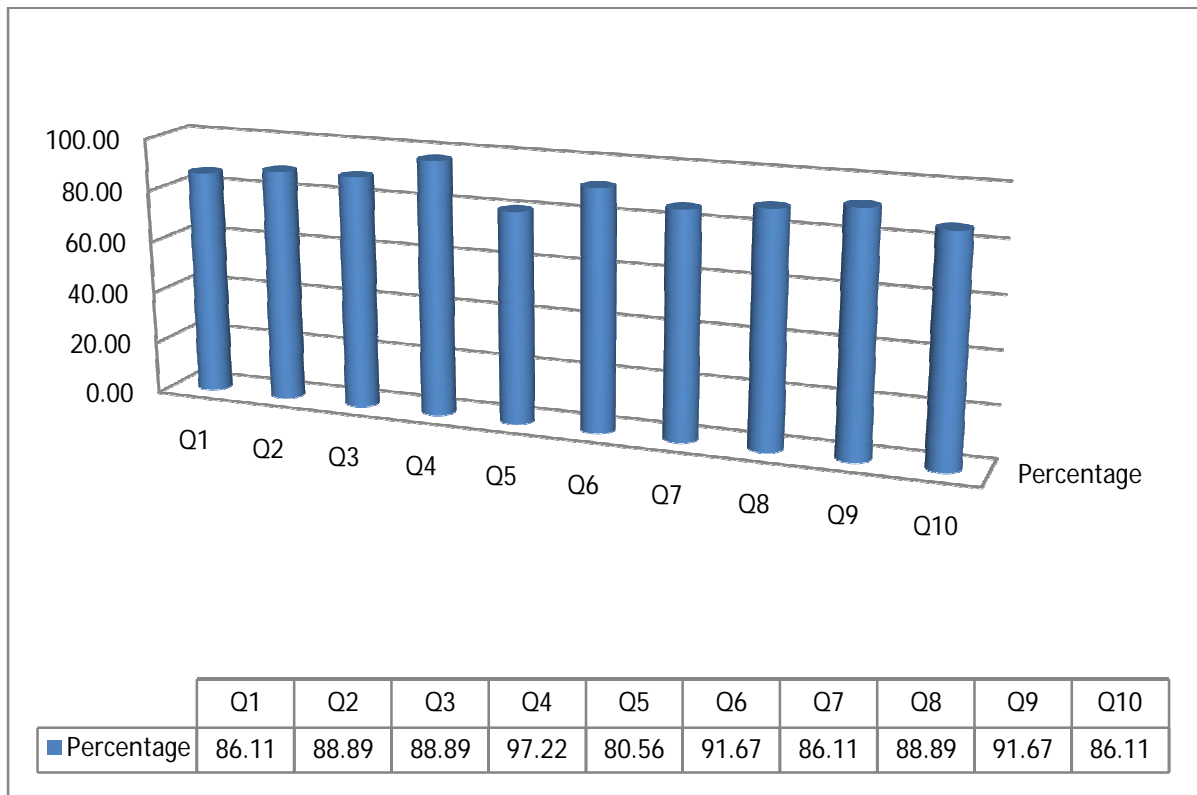
(AUTONOMOUS)

(Approved by AICTE, New Delhi and Affiliated to Anna University, Chennai)

ERODE – 638052 TAMIL NADU

Email: principal@nandhaengg.org Mobile: 73737 12234

FEEDBACK REPORT ON CURRICULUM AND SYLLABUS




Dr. E.K. MOHANRAJ, PhD
HOD-Civil Engineering
Nandha Engineering College
(Autonomous)
ERODE-638 052 TAMIL NADU



NANDHA ENGINEERING COLLEGE

(AUTONOMOUS)

(Approved by AICTE, New Delhi and Affiliated to Anna University, Chennai)

ERODE – 638052 TAMIL NADU

Email: principal@nandhaengg.org Mobile: 73737 12234

ANALYSIS AND ACTION TAKEN REPORT

Feedback from the Employers is collected to improve the teaching learning process

Analysis

- Industry Institute interactive activities may be strengthened
- Incorporation of software tools in the curriculum
- Introduce environmentally responsible courses in curriculum

Action Taken:

- Industry-institute interactive activities have been strengthened through workshops, internships, and collaborative projects.
- Software tools in course design and drawing laboratory have been incorporated into the curriculum to enhance technical skills and practical knowledge.
- Environmentally responsible courses have been introduced under the 'Environment and Sustainability' vertical to promote sustainability and increase awareness of environmental issues among students.

Dr. E.K. MOHANRAJ, PhD
HOD-Civil Engineering
Nandha Engineering College
(Autonomous)
ERODE-638 052 TAMIL NADU



NANDHA ENGINEERING COLLEGE

(AUTONOMOUS)

(Approved by AICTE, New Delhi and Affiliated to Anna University, Chennai)

ERODE – 638052 TAMIL NADU

Email: principal@nandhaengg.org Mobile: 73737 12234

DEPARTMENT OF CIVIL ENGINEERING

FACULTY FEEDBACK

S.No	Feedback Questions	Excellent	Good	Fair	Poor	Total Weightage	Percentage (%)
1	Curriculum and syllabus on par with recent trends	8	5	0	0	47	90.38
2	Elucidation of course outcomes	9	4	0	0	48	92.31
3	Adequacy of Academic tasks in the course plan	8	2	3	0	44	84.62
4	Syllabus in accordance with competitive examinations	8	4	1	0	46	88.46
5	Importance and relevance of the course to industry and societal needs	9	3	1	0	47	90.38
6	Accessibility of relevant reading Materials and E-sources in the library	11	2	0	0	50	96.15
7	Course equilibrium between theory and application	9	3	1	0	47	90.38
8	Privilege to propose, modify, suggest and incorporate new topics in the syllabus through proper forum	10	3	0	0	49	94.23
9	Flexibility in adopting new techniques/ tools strategies in reaching	11	2	0	0	50	96.15
10	Scope provided for research activities	8	3	2	0	45	86.54


Dr. E.K. MOHANRAJ, PhD
HOD-Civil Engineering
Nandha Engineering College
(Autonomous)
ERODE-638 052 TAMIL NADU



NANDHA ENGINEERING COLLEGE

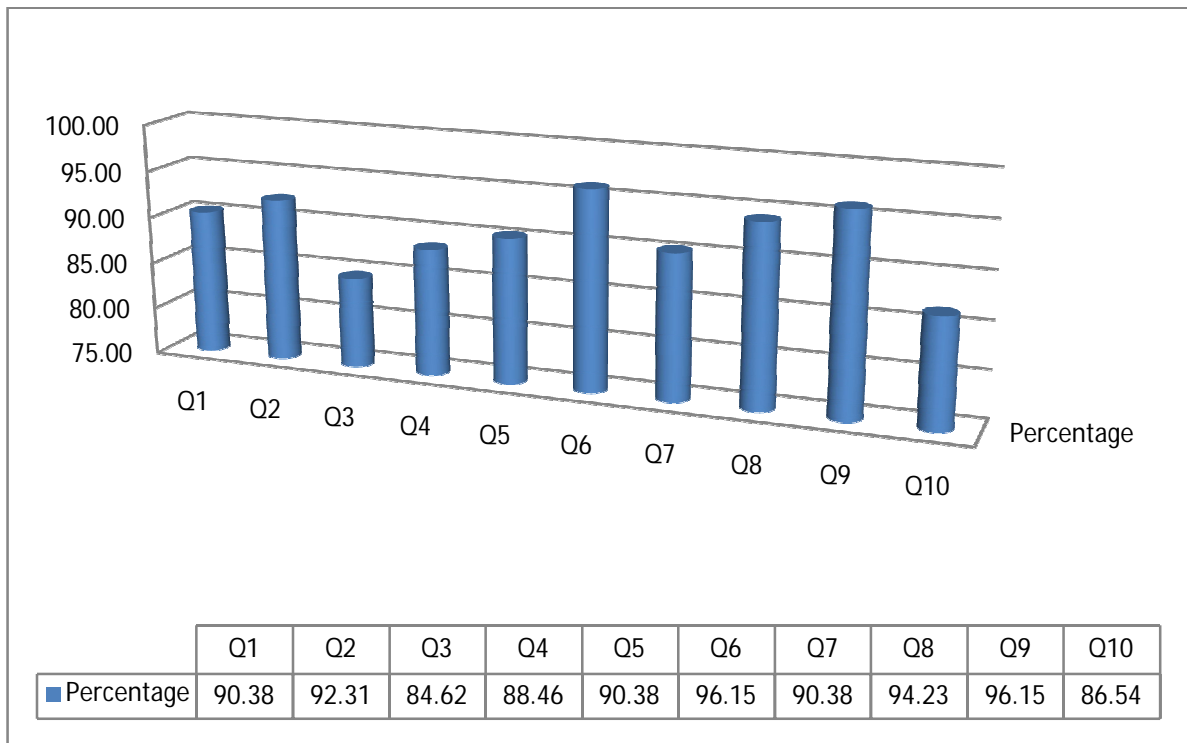
(AUTONOMOUS)

(Approved by AICTE, New Delhi and Affiliated to Anna University, Chennai)

ERODE – 638052 TAMIL NADU

Email: principal@nandhaengg.org Mobile: 73737 12234

FACULTY FEEDBACK ON CURRICULAM AND SYLLABUS




Dr. E.K. MOHANRAJ, PhD
HOD-Civil Engineering
Nandha Engineering College
(Autonomous)
ERODE-638 052 TAMIL NADU



NANDHA ENGINEERING COLLEGE

(AUTONOMOUS)

(Approved by AICTE, New Delhi and Affiliated to Anna University, Chennai)

ERODE – 638052 TAMIL NADU

Email: principal@nandhaengg.org Mobile: 73737 12234

ANALYSIS AND ACTION TAKEN REPORT

Following are the analysis and suggestions which are given by the Faculty members:

Analysis:

- Faculty members agreed that the curriculum and syllabus was on par with recent trends and it has relevance to the Industry needs.
- The course outcomes and academic tasks in the course plan were adequate.
- Faculty has enough freedom through the Board of Studies that has privilege to propose, modify, suggest and include new topics in the syllabus.

Suggestions:

- Introduce elective courses with specializations that align with the diverse needs of the industry.
- Suggests a need for more emphasis on research-based projects, collaboration with industry and academic institutions.

Action taken:

- In R22 curriculum, Elective courses with specializations aligned to the diverse needs of the industry have been introduced in the curriculum.
- More focus has been given to research-based projects, through internship


Dr. E.K. MOHANRAJ, PhD
HOD-Civil Engineering
Nandha Engineering College
(Autonomous)
ERODE-638 052 TAMIL NADU