



# NANDHA ENGINEERING COLLEGE

(AUTONOMOUS)

(Approved by AICTE, New Delhi and Affiliated to Anna University, Chennai)

ERODE – 638052 TAMIL NADU

Email: [principal@nandhaengg.org](mailto:principal@nandhaengg.org) Mobile : 73737 12234

## 1.4 FEEDBACK SYSTEM

### STUDENTS FEEDBACK

S.No	Feedback Questions	Excellent	Good	Fair	Poor	Total Weightage	Percentage
1.	The curriculum and syllabus are well organized and easy to follow	75	123	6	2	683	82.89
2.	Is the entire syllabus covered by the faculty?	81	116	8	1	689	83.62
3.	Laboratory exercise improve my ability to understand concepts and helps to relate and apply theory to practice	74	122	9	1	681	82.65
4.	The depth of the syllabus is proportional to course outcomes	76	123	6	1	686	83.25
5.	The correct credit were allocated to the course depending on the difficulty of the course	88	108	8	2	694	84.22
6.	The syllabus provide the necessary skill set required by the industry	71	117	15	3	668	81.07
7.	The books prescribed as reference material are relevant, updated and appropriate	71	120	14	1	673	81.67
8.	The elective offered are pertinent to the specification streams and to technology advancements.	78	118	9	1	685	83.13
9.	Is the syllabus career oriented?	83	114	9		692	83.98
10.	Is the pre-requisite course appropriate?	68	129	7	2	675	81.92
11.	Does the teacher provide examples of concepts/principles, description effectively?	86	106	12	2	688	83.50

  
Dr. S. KAVITHA M.E., Ph.D  
Professor and Head  
Department of ECE  
Nandha Engineering College (Autonomous)  
Erode-638 052





# NANDHA ENGINEERING COLLEGE

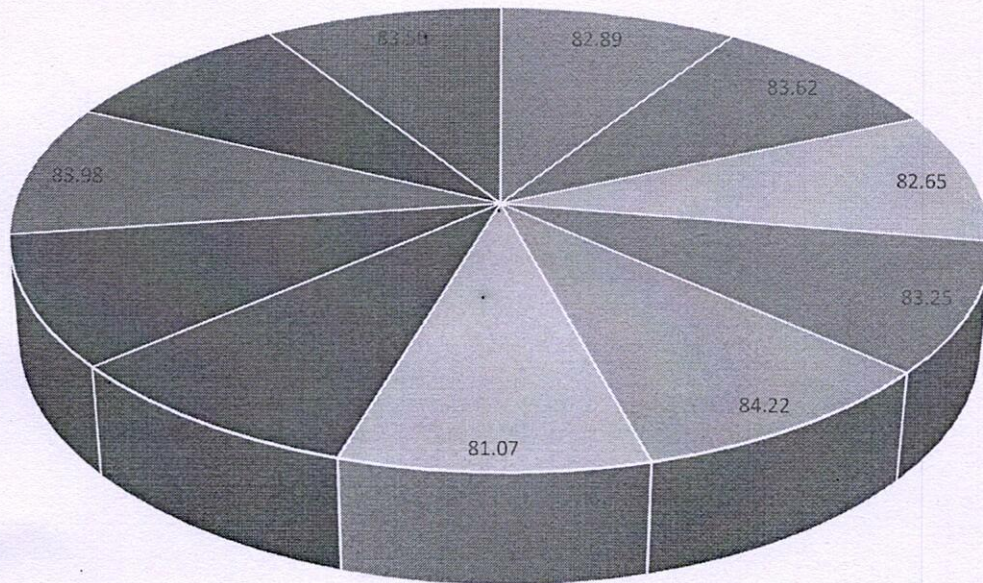
(AUTONOMOUS)

(Approved by AICTE, New Delhi and Affiliated to Anna University, Chennai)

ERODE – 638052 TAMIL NADU

Email: [principal@nandhaengg.org](mailto:principal@nandhaengg.org) Mobile : 73737 12234

## STUDENT FEEDBACK REPORT ON CURRICULUM AND SYLLABUS



■ 1 ■ 2 ■ 3 ■ 4 ■ 5 ■ 6 ■ 7 ■ 8 ■ 9 ■ 10 ■ 11





# NANDHA ENGINEERING COLLEGE

(AUTONOMOUS)

(Approved by AICTE, New Delhi and Affiliated to Anna University, Chennai)

ERODE – 638052 TAMIL NADU

Email: [principal@nandhaengg.org](mailto:principal@nandhaengg.org) Mobile : 73737 12234

## STUDENT FEEDBACK REPORT

### ANALYSIS AND ACTION TAKEN REPORT

Feedback from the students is collected to improve the teaching learning process

#### Analysis

- Most of the students find the curriculum well-organized.
- Text books and reference books available in the library are adequate and relevant
- Syllabus supports career readiness and could emphasize interdisciplinary skills.
- Electives align with technical advancements but might need diversification.

#### Suggestions

- Students suggested to provide a roadmap or syllabus breakdown at the start of the semester
- Suggested to collaborate with industries to design modules or certifications.

#### Action taken

- Conducted a curriculum committee meeting to address specific feedback and Scheduled faculty training to ensure curriculum delivery consistency.
- Collaborated with industries for real-world lab projects through Visiting faculty scheme
- Internship to industries is motivated to improve their technical skills.
- Value added courses are conducted to meet industrial needs.

*S. Kavitha*

Dr. S. KAVITHA M.E., Ph.D  
Professor and Head  
Department of ECE  
Nandha Engineering College (Autonomous),  
Erode-638 052





# NANDHA ENGINEERING COLLEGE

(AUTONOMOUS)

(Approved by AICTE, New Delhi and Affiliated to Anna University, Chennai)

ERODE – 638052 TAMIL NADU

Email: [principal@nandhaengg.org](mailto:principal@nandhaengg.org) Mobile : 73737 12234

## DEPARTMENT OF ELECTRONICS AND COMMUNICATION ENGINEERING

### 1.4 FEEDBACK SYSTEM

#### ALUMNI FEEDBACK

S.No	Feedback Questions	Excellent	Good	Fair	Poor	Total Weightage	Percentage
1.	Academic initiatives taken by the college to improve technical or industry required knowledge is sufficient	49	35	17	0	335	82.9
2.	Co-curricular initiatives taken by the college to improve the students technical/ professional skills	42	51	8	0	337	83.4
3.	Whether the choice based credit system was in tune with the existing or emerging trends of the industry	34	58	7	2	326	80.6
4.	Whether the Programme offered to you was suitably demanding the industrial needs	54	32	15	0	342	84.6
5.	Was the Syllabus prescribed for the programmes are well organized and structured?	47	45	8	1	340	84.1
6.	Content of the courses (subjects) offered under my programme was up to date and relevant	53	43	5	0	342	84.6
7.	Project work / Internships offered under my programme was challenging and constructive	46	40	10	5	329	81.4
8.	Open Elective courses offered were diverse and resourceful	51	43	7	0	347	85.8
9.	Overall learning environment offered in the campus	54	40	7	0	350	86.6

*S. Kavitha*

Dr. S. KAVITHA M.E., Ph.D  
Professor and Head  
Department of ECE

Nandha Engineering College (Autonomous)  
Erode-638 052





# NANDHA ENGINEERING COLLEGE

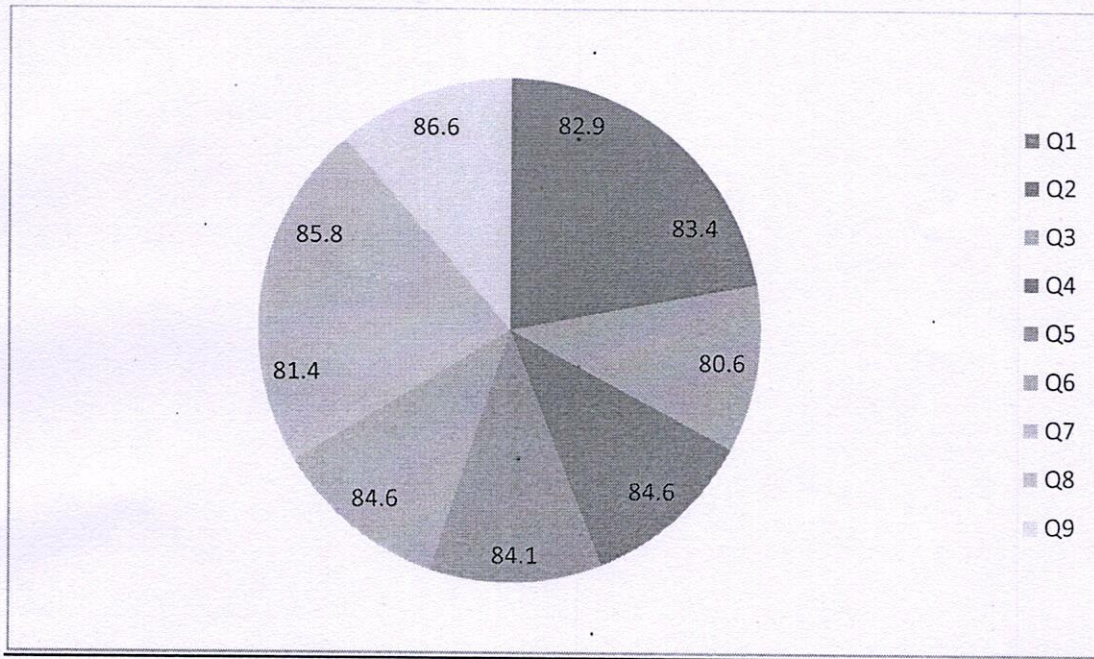
(AUTONOMOUS)

(Approved by AICTE, New Delhi and Affiliated to Anna University, Chennai)

ERODE – 638052 TAMIL NADU

Email: [principal@nandhaengg.org](mailto:principal@nandhaengg.org) Mobile : 73737 12234

## ALUMNI FEEDBACK REPORT ON CURRICULUM AND SYLLABUS





# NANDHA ENGINEERING COLLEGE

(AUTONOMOUS)

(Approved by AICTE, New Delhi and Affiliated to Anna University, Chennai)

ERODE – 638052 TAMIL NADU

Email: [principal@nandhaengg.org](mailto:principal@nandhaengg.org) Mobile : 73737 12234

## ALUMNI FEEDBACK REPORT ANALYSIS AND ACTION TAKEN REPORT

Following are the Analysis and Suggestions which are given by the Alumni to our department:

### Analysis:

- To improve internship opportunities to students and collaborate with industries.
- Introduce new subject as SAP- Systems Applications and Products.
- Club activities and industry visits need to be enhanced for learning experience.
- Need more hands on training on core field.
- Data management skill along with AI&ML will be better for future graduates.

### Suggestion:

Hands on training, Internship opportunities, MoU to be strengthened

### Action taken:

Students are given hands on training in PCB design, Design of Electronic components and one credit course on Android App Development.

  
**Dr. S. KAVITHA M.E., Ph.D**  
Professor and Head  
Department of ECE  
Nandha Engineering College (Autonomous)  
Erode-638 052





# NANDHA ENGINEERING COLLEGE

(AUTONOMOUS)

(Approved by AICTE, New Delhi and Affiliated to Anna University, Chennai)

ERODE – 638052 TAMIL NADU

Email: [principal@nandhaengg.org](mailto:principal@nandhaengg.org) Mobile : 73737 12234

## DEPARTMENT OF ELECTRONICS AND COMMUNICATION ENGINEERING

### 1.4 FEEDBACK SYSTEM

#### FACULTY FEEDBACK

S.No	Feedback Questions	Excellent	Good	Fair	Poor	Total Weightage	Percentage (%)
1	Curriculum and syllabus on par with recent trends	8	10	1	0	64	84.21
2	Elucidation of course outcomes	9	10			66	86.84
3	Adequacy of Academic tasks in the course plan	8	11			65	85.53
4	Syllabus in accordance with competitive examinations	5	13	1		61	80.26
5	Importance and relevance of the course to industry and societal needs	5	12	2		60	78.95
6	Accessibility of relevant reading Materials and E-sources in the library	8	11			65	85.53
7	Course equilibrium between theory and application	6	12	1		62	81.58
8	Privilege to propose, modify, suggest and incorporate new topics in the syllabus through proper forum	10	9			67	88.16
9	Flexibility in adopting new techniques/ tools strategies in reaching	11	8			68	89.47
10	Scope provided for research activities	7	11	1		63	82.89

*S. Kavitha*

Dr. S. KAVITHA M.E., Ph.D  
Professor and Head  
Department of ECE  
Nandha Engineering College (Autonomous)  
Erode-638 052





# NANDHA ENGINEERING COLLEGE

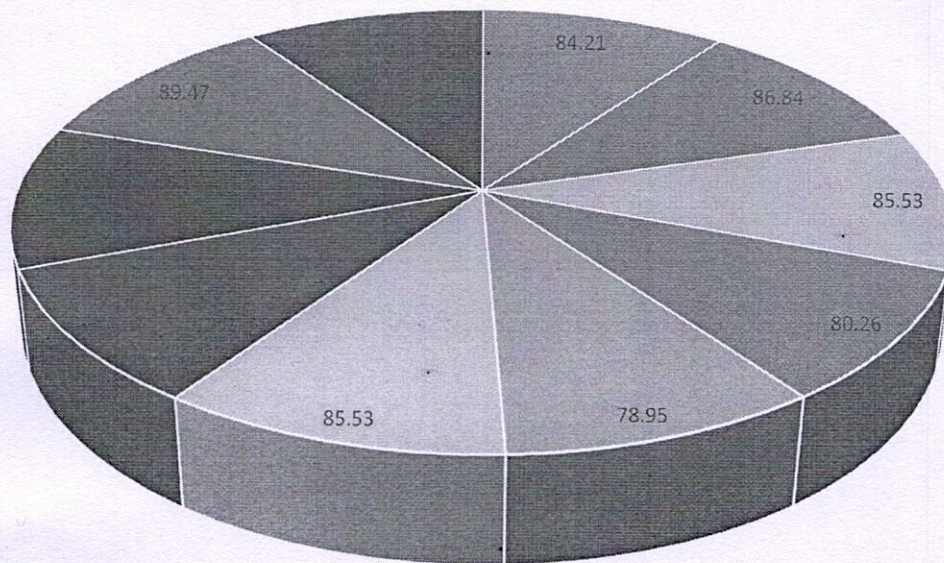
(AUTONOMOUS)

(Approved by AICTE, New Delhi and Affiliated to Anna University, Chennai)

ERODE – 638052 TAMIL NADU

Email: [principal@nandhaengg.org](mailto:principal@nandhaengg.org) Mobile : 73737 12234

## FACULTY FEEDBACK ON CURRICULAM AND SYLLABUS



■ 1 ■ 2 ■ 3 ■ 4 ■ 5 ■ 6 ■ 7 ■ 8 ■ 9 ■ 10







# NANDHA ENGINEERING COLLEGE

(AUTONOMOUS)

(Approved by AICTE, New Delhi and Affiliated to Anna University, Chennai)

ERODE – 638052 TAMIL NADU

Email: [principal@nandhaengg.org](mailto:principal@nandhaengg.org) Mobile : 73737 12234

---

## FACULTY FEEDBACK REPORT

### ANALYSIS AND ACTION TAKEN REPORT

Following are the analysis and suggestions given by the Faculty members:

#### Analysis:

- Curriculum is aligned with recent trends and technologies.
- Faculty is satisfied with the clarity of course outcomes, indicating effective communication.
- Faculty is satisfied with library resources but may need access to more specific e-resources.
- Faculty feels that there is a scope for improvement in integrating research opportunities into the curriculum.

#### Suggestions:

- Organize workshops for Faculty to align teaching with recent developments.
- Facilitate collaboration with research institutes or industries

#### Action taken:

- Organized brainstorming sessions to identify trends that align with industry and academia.
- Faculty with training members attended industrial training to bridge the gap between academics & industry.

**Dr. S. KAVITHA M.E., Ph.D**  
Professor and Head  
Department of ECE

Nandha Engineering College (Autonomous)  
Erode-638 052





# NANDHA ENGINEERING COLLEGE

(AUTONOMOUS)

(Approved by AICTE, New Delhi and Affiliated to Anna University, Chennai)

ERODE – 638052 TAMIL NADU

Email: [principal@nandhaengg.org](mailto:principal@nandhaengg.org) Mobile : 73737 12234

## DEPARTMENT OF ELECTRONICS AND COMMUNICATION ENGINEERING

### 1.4 FEEDBACK SYSTEM

### EMPLOYER FEEDBACK

S.No	Feedback Questions	Excellent	Good	Fair	Poor	Total Weightage	Percentage (%)
1.	Satisfaction with the calibre of the graduates	7	3	2	0	41	85.4
2.	Satisfaction that graduates are learning the right skills/courses relevant to your organisation's requirements	8	2	2	0	42	87.8
3.	Satisfaction with the speed at which course content is being adapted to meet the changing industrial needs	7	3	1	1	40	83.3
4.	Institutional Reputation	6	3	3	0	39	81.2
5.	Relevant subject or Discipline Knowledge	8	2	1	1	41	85.4
6.	Quality of Employability Skills and Attributes of our graduates	7	3	2	0	41	85.4
7.	The institution produces high quality graduates	7	4	1	0	42	87.8
8.	Successful past experience of recruiting from this institution	7	3	2	0	41	85.4
9.	Organisation and institution collaborate on joint research projects	6	3	3	0	39	81.2
10.	Ability to apply professional and / or technical knowledge in the workplace	7	4	1	0	42	87.8





# NANDHA ENGINEERING COLLEGE

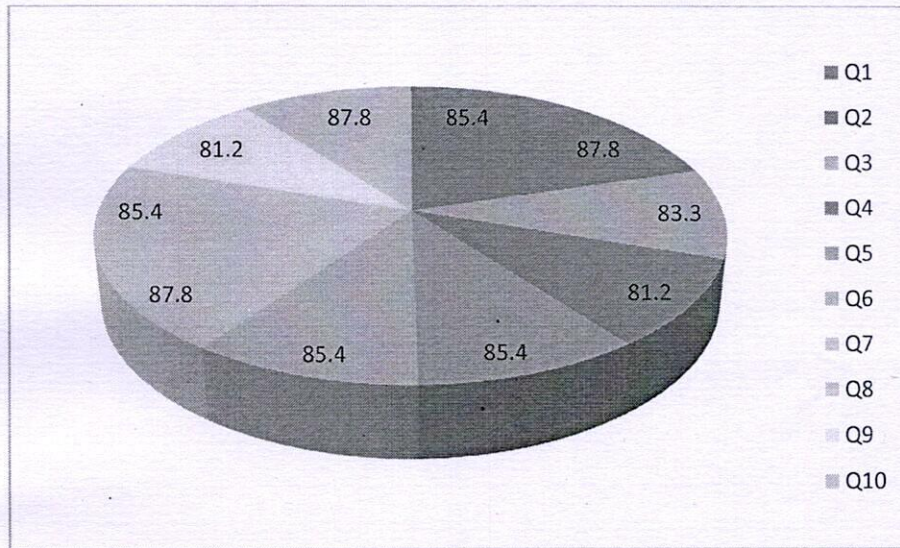
(AUTONOMOUS)

(Approved by AICTE, New Delhi and Affiliated to Anna University, Chennai)

ERODE – 638052 TAMIL NADU

Email: [principal@nandhaengg.org](mailto:principal@nandhaengg.org) Mobile : 73737 12234

## EMPLOYER FEEDBACK REPORT ON CURRICULUM AND SYLLABUS





# NANDHA ENGINEERING COLLEGE

(AUTONOMOUS)

(Approved by AICTE, New Delhi and Affiliated to Anna University, Chennai)

ERODE – 638052 TAMIL NADU

Email: [principal@nandhaengg.org](mailto:principal@nandhaengg.org) Mobile : 73737 12234

## EMPLOYER FEEDBACK REPORT

### ANALYSIS AND ACTION TAKEN REPORT

Feedback from the Employers is collected to improve the teaching learning process and the points given below are suggested by the Employers.

#### Analysis

- The institution is succeeding in preparing students for the workplace in terms of employability skills.
- Employers believe graduates are effectively able to apply the skills they have learned in real-world settings, a crucial factor for employability.
- Employers are satisfied with graduates' subject-specific knowledge. This reflects well on the institution's ability to provide a solid academic foundation in relevant fields.

#### Suggestions:

- The institution may need to invest in strategies to raise its profile within the industry and academia. This could involve highlighting successful alumni, increasing visibility in professional networks, or fostering partnerships with high-profile industry experts.
- Enhancing industry-academic partnerships through joint research projects or internships could provide both academic enrichment and practical value for employers.
- More training to be given to improve their technical skill sets.

#### Action Taken:

- Strengthened and formalized relationships with key industries through MoUs, collaborative research, internships, industrial visits and curriculum co-design. This helps to ensure that course content remains relevant and quickly adaptable to the latest industry trends.
- Developed mechanisms for rapid curriculum adaptation, including frequent consultation with industry stakeholders through DAB, BOS, Academic Council and Governing Body to provide real-time feedback.

  
Dr. S. KAVITHA M.E., Ph.D  
Professor and Head  
Department of ECE  
Nandha Engineering College (Autonomous)  
Erode-638 052

